

Anti-IL13RA2 Antibody

CATALOG NO.: A1774-100 100 µl.

BACKGROUND DESCRIPTION: The protein encoded by this gene is closely related to IL13RA1, a subunit of the interleukin 13 receptor complex. This protein binds IL13 with high affinity, but lacks cytoplasmic domain, and does not appear to function as a signal mediator. It is reported to play a role in the internalization of IL13.

ALTERNATE NAMES: Cancer/testis antigen 19, CD213a2, CT19, IL-13 receptor subunit alpha-2, IL-13R subunit alpha-2, IL-13R-alpha-2, IL-13RA2, IL13 receptor, IL13BP, IL13R, Interleukin 13 binding protein.

ANTIBODY TYPE: Polyclonal

CONCENTRATION: 0.2 mg/ml

HOST/ISOTYPE: Rabbit / IgG.

IMMUNOGEN: Recombinant protein of human IL13RA2.

PURIFICATION: Affinity purification.

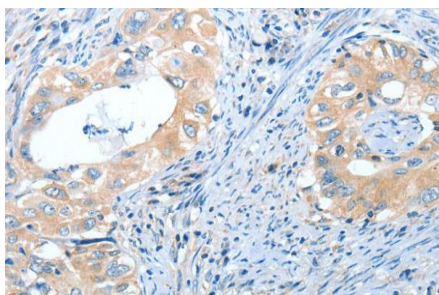
FORM: Liquid.

FORMULATION: PBS with 0.05% sodium azide, 50% glycerol, PH7.3

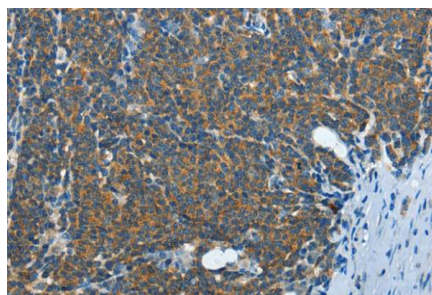
SPECIES REACTIVITY: Human.

STORAGE CONDITIONS: Store at -20°C. Avoid freeze / thaw cycles.

APPLICATIONS AND USAGE: IHC 1:15-1:50.



IHC staining of paraffin-embedded Human cervical cancer tissue using Anti-IL13RA2 Antibody.



IHC staining of paraffin-embedded Human lymphoma tissue using Anti-IL13RA2 Antibody.

RELATED PRODUCTS:

- Anti-IL10RA Antibody (Cat# A1770).
- Human CellExp™ IL13RA1/CD213A1, human recombinant (Cat# 7433).
- Anti-IL13RA1 Antibody (Cat# A1773).
- Human CellExp™ IL13RA2/CD213, human recombinant (Cat# 7489).
- IL13RA2, human recombinant (Cat# 7351).
- IL-13 Antibody (Cat# 5164).

FOR RESEARCH USE ONLY! Not to be used on humans.