

Anti-IL18R1 Antibody

CATALOG NO.: A1776-100 100 µl.

BACKGROUND DESCRIPTION: The protein encoded by this gene is a cytokine receptor that belongs to the interleukin 1 receptor family. This receptor specifically binds interleukin 18 (IL18), and is essential for IL18 mediated signal transduction. IFN-alpha and IL12 are reported to induce the expression of this receptor in NK and T cells. This gene along with four other members of the interleukin 1 receptor family, including IL1R2, IL1R1, ILRL2 (IL-1Rrp2), and IL1RL1 (T1/ST2), form a gene cluster on chromosome 2q. Alternatively spliced transcript variants encoding different isoforms have been found for this gene.

ALTERNATE NAMES: CD218 antigen-like family member A, CD218a, CDw218a, IL 1Rrp, IL1 receptor related protein, IL18ralpha, Interleukin 18 receptor 1, Interleukin-18 receptor 1.

ANTIBODY TYPE: Polyclonal

CONCENTRATION: 0.6 mg/ml

HOST/ISOTYPE: Rabbit / IgG.

IMMUNOGEN: Recombinant protein of human IL18R1.

PURIFICATION: Affinity purification.

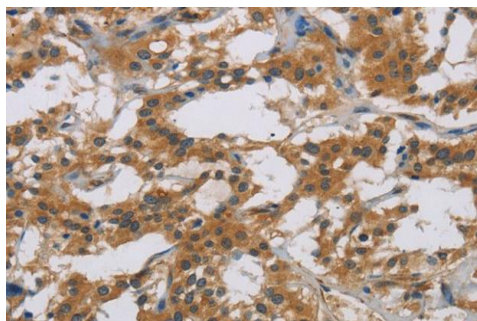
FORM: Liquid.

FORMULATION: PBS with 0.05% sodium azide, 50% glycerol, PH7.3

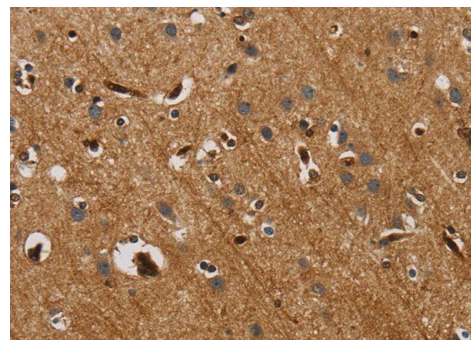
SPECIES REACTIVITY: Human.

STORAGE CONDITIONS: Store at -20°C. Avoid freeze / thaw cycles.

APPLICATIONS AND USAGE: IHC 1:50-1:200.



IHC staining of paraffin-embedded Human thyroid cancer tissue using Anti-IL18R1 Antibody.



IHC staining of paraffin-embedded Human brain tissue using Anti-IL18R1 Antibody.

RELATED PRODUCTS:

- IL-18 Antibody (Cat# 5179).
- IL-18BP, human recombinant (Cat# 7324).
- IL-18 (Human) ELISA Kit (Cat# K4227).
- IL-18 Blocking Peptide (Cat# 5179BP).

FOR RESEARCH USE ONLY! Not to be used on humans.