

## Biotinylated Procalcitonin Antibody

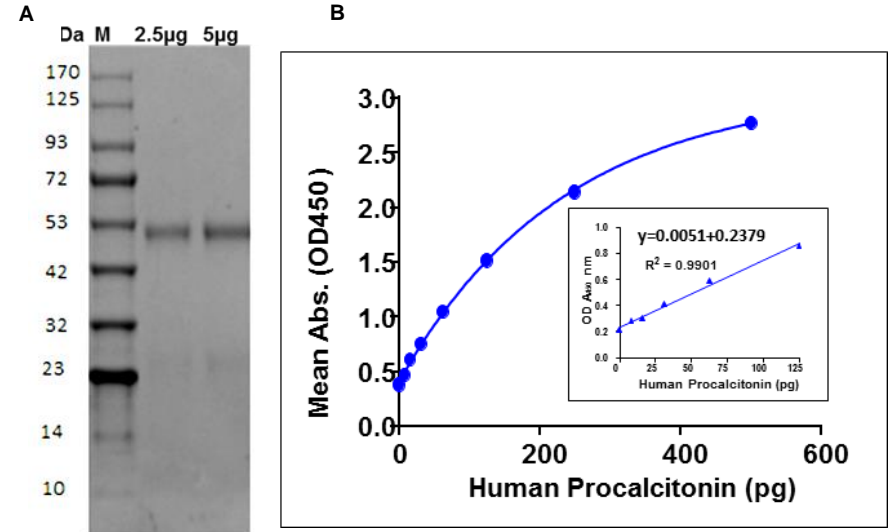
<b>CATALOG NO:</b>	A1779-100	100 µl
<b>ALTERNATIVE NAMES:</b>	Procalcitonin, Calcitonin, Katalcalcin, PCT, CT, CALC1, CALCA, CGRP, CGRP-I, MGC126648	
<b>CONCENTRATION:</b>	0.5 mg/ml	
<b>IMMUNOGEN:</b>	Recombinant Human Procalcitonin 26-141 aa (BV#4009)	
<b>HOST:</b>	Rabbit	
<b>SPECIES REACTIVITY:</b>	Human, Mouse, Rat	
<b>PURIFICATION:</b>	Affinity purified	
<b>FORMULATION:</b>	0.5 mg/ml solution in PBS containing 20% glycerol	
<b>STORAGE CONDITIONS:</b>	Store at -20°C in the dark. For long term storage, aliquot and freeze at -70°C. Avoid repeated freeze/defrost cycles.	

**BACKGROUND:** Procalcitonin (PCT) the precursor of the hormone calcitonin is a 116-amino acid protein coded by the gene CALCA. Procalcitonin is mainly produced by the C cells of the thyroid and certain endocrine cells of the lung. Under normal expression conditions, Procalcitonin, is cleaved to form three distinct molecules: a propeptide and the following 2 chains, an N terminal fragment called aminoprocalcitonin, calcitonin (aa 85-116) and katalcalcin (aa 121-141). Secreted Calcitonin is known to cause a rapid but short-lived drop in the level of calcium and phosphate in blood by prompting the incorporation of those ions in the bones. Levels of unprocessed procalcitonin rise significantly after bacterial infection, trauma or shock making it important diagnostic biomarker of sepsis.

**APPLICATIONS:** Western Blot, ELISA

**Note:** optimal dilutions must be determined by the user.

**SPECIFIC ACTIVITY:** BioVision's Biotinylated Human Recombinant Procalcitonin Antibody can bind to Procalcitonin, human recombinant (BV #4009) in functional ELISA in a linear range of 0.5 to 125 pg.



**Fig. A: SDS-PAGE (4-20%) of Biotinylated Procalcitonin Antibody:** Biotinylated Antibody loaded under reducing conditions and stained with Coomassie Blue. Lane M-MW marker,

**Fig. B: Human Procalcitonin Sandwich ELISA.** Biotinylated Procalcitonin antibody can bind to Procalcitonin, human recombinant (BV #4009) in Sandwich ELISA in a linear range of 0.5 to 125 pg

**RELATED PRODUCTS:**

- Procalcitonin Antibody (Cat. No. 6640-30T,-100)
- Procalcitonin, Human Recombinant (Cat. No. 4009-10,-50,-1mg)
- Protein G-Biotin (Cat. No. 6512-100,-1mg)
- Anti-HA Tag (Biotin) Antibody (5E11D8) (Cat. No. A1282)

**For Research Use Only! Not to be used in humans.**