

Anti-Mouse Ig Kappa Light Chain, Rabbit Monoclonal Antibody

CATALOG NO.: A1780-50 50 µg.

BACKGROUND DESCRIPTION: Rabbit monoclonal to Mouse Ig Kappa Light Chain.

ALTERNATE NAMES: Mouse Immunoglobulin Kappa light chain, Immunoglobulin kappa constant, Igkc.

ANTIBODY TYPE: Monoclonal

CLONE: RM103

CONCENTRATION: 1.0 mg/mL

HOST/ISOTYPE: Rabbit / Rabbit IgG.

IMMUNOGEN: Mouse IgG

SPECIFICITY: This antibody reacts to the kappa light chain of mouse immunoglobulins. No cross reactivity with the lamda light chain, human IgG, rat IgG, or goat IgG. The Fc region of RM103 has been engineered to eliminate Fc receptor binding.

PURIFICATION: Protein A affinity purified from an animal origin-free culture supernatant.

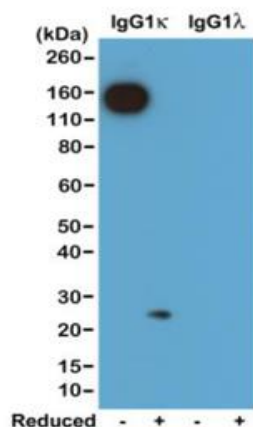
FORM: Liquid.

FORMULATION: 50% Glycerol/PBS with 1% BSA and 0.09% sodium azide

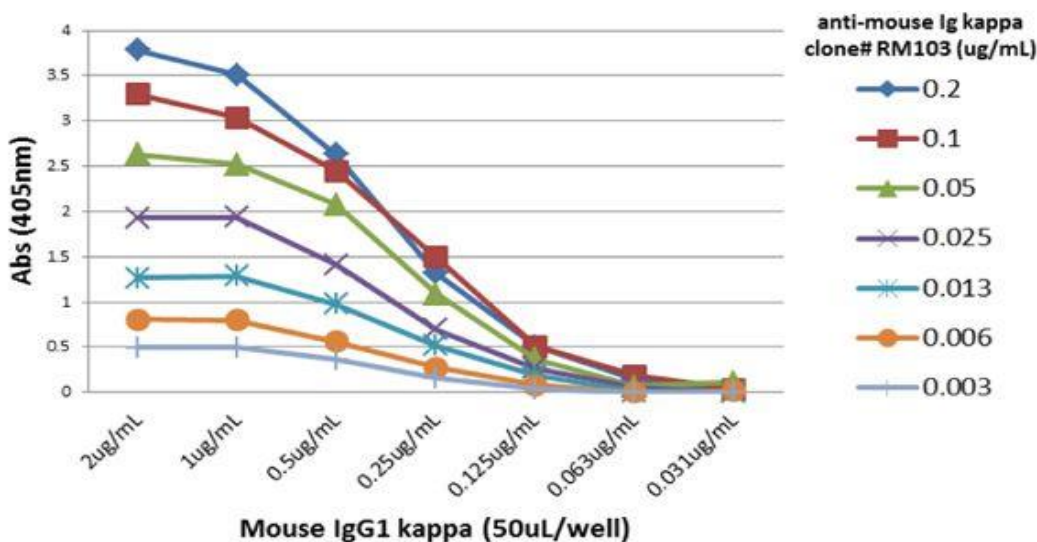
SPECIES REACTIVITY: Mouse.

STORAGE CONDITIONS: Store at -20°C. Avoid repeated freeze / thaw cycles.

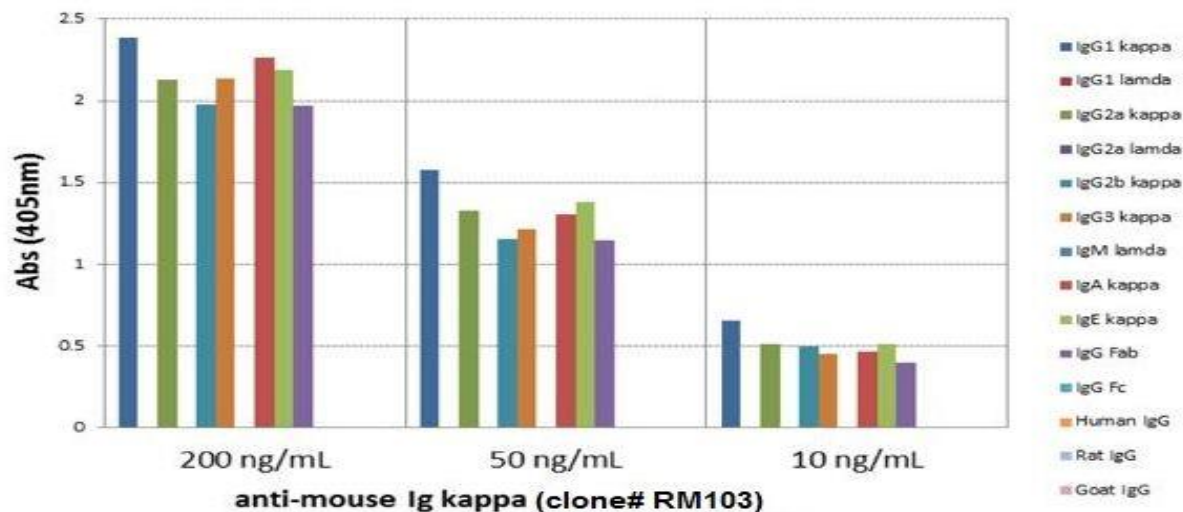
APPLICATIONS AND USAGE: Western Blot (WB): 0.1 µg/mL-0.5 µg/ml.
ELISA: 0.005 µg/mL-0.2 µg/ml.
Immunohistochemistry (IHC): 0.5 µg/mL-2 µg/ml.
Immunocytochemistry (ICC): 0.5 µg/mL-2 µg/ml.



Western blot of nonreduced (-) and reduced (+) mouse IgG1κ and IgG1λ (20ng/lane), using 0.2µg/mL of Anti-Mouse Ig Kappa Light Chain. Rabbit Monoclonal Antibody. This antibody reacts to nonreduced IgG1κ (~150 kDa). and slightly reacts to reduced



A titer ELISA of mouse IgG1k. The plate was coated with different amounts of mouse IgG1k. A serial dilution of RM103 was used as the primary antibody. An alkaline phosphatase conjugated anti-rabbit IgG as the secondary antibody.



ELISA of mouse immunoglobulins shows RM103 reacts to the kappa light chain of mouse immuno-globulins. No cross reactivity with the lamda light chain, human IgG ($\kappa+\lambda$), rat IgG ($\kappa+\lambda$), or goat IgG ($\kappa+\lambda$). The plate was coated with 50 ng/well of different immunoglobulins. 200 ng/mL, 50 ng/mL, or 10 ng/mL of RM103 was used as the primary antibody. An alkaline phosphatase conjugated anti-rabbit IgG as the secondary antibody.

RELATED PRODUCTS:

- Anti-Mouse IgG, Rabbit Monoclonal Antibody (Cat# A1781).
- Anti-Mouse IgG1, Rabbit Monoclonal Antibody (Cat# A1782).
- Anti-Mouse IgG2a kappa, Rabbit Monoclonal Antibody (Cat# A1783).
- Anti-Mouse IgG2a, Rabbit Monoclonal Antibody (Cat# A1784).
- Anti-Mouse IgG2b, Rabbit Monoclonal Antibody (Cat# A1785).
- Anti-Mouse IgG3 Rabbit Monoclonal Antibody (Cat# A1786).

FOR RESEARCH USE ONLY! Not to be used on humans.

