

# Anti-Mouse IgG, Rabbit Monoclonal Antibody

CATALOG NO.: A1781-50 50 µg.

**BACKGROUND DESCRIPTION:** Rabbit monoclonal to Mouse IgG

**ANTIBODY TYPE:** Monoclonal

**CLONE:** RM104

**CONCENTRATION:** 1.0 mg/ml

**HOST/ISOTYPE:** Rabbit / Rabbit IgG.

**IMMUNOGEN:** Mouse IgG

**SPECIFICITY:** RM104 reacts to the Fc region of all mouse IgG subclasses. No cross reactivity with mouse IgM, IgA, IgE, human IgG, and rat IgG. It may cross react to goat IgG. The Fc region of RM104 has been engineered to eliminate Fc receptor binding.

**PURIFICATION:** Protein A affinity purified from an animal origin-free culture supernatant.

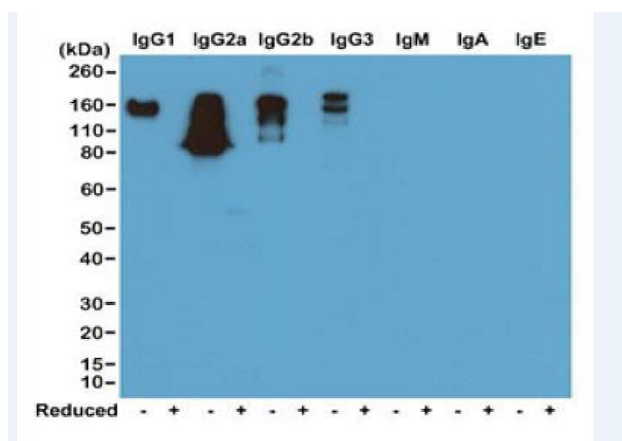
**FORM:** Liquid.

**FORMULATION:** 50% Glycerol/PBS with 1% BSA and 0.09% sodium azide

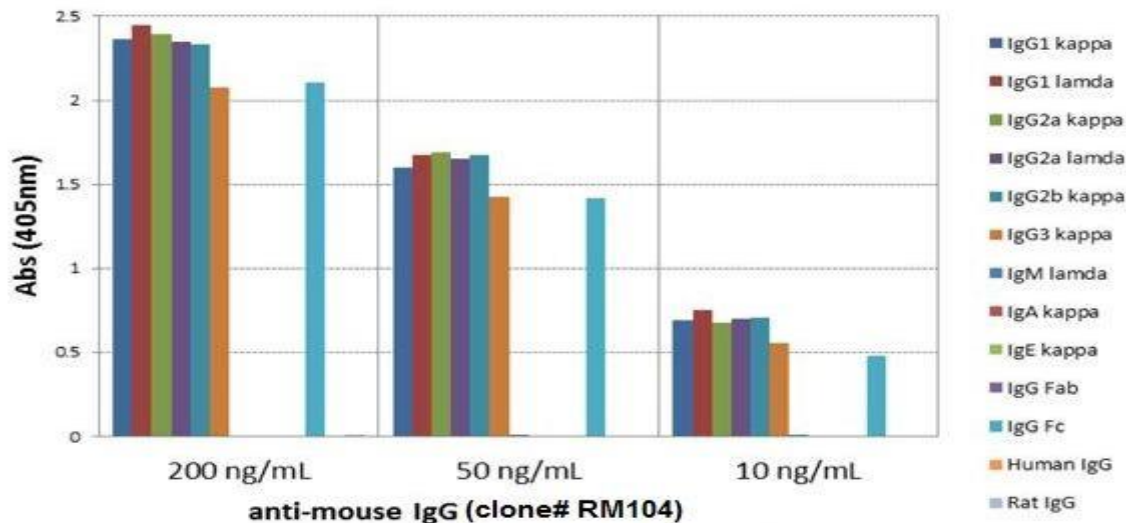
**SPECIES REACTIVITY:** Mouse.

**STORAGE CONDITIONS:** Store at -20°C. Avoid repeated freeze / thaw cycles.

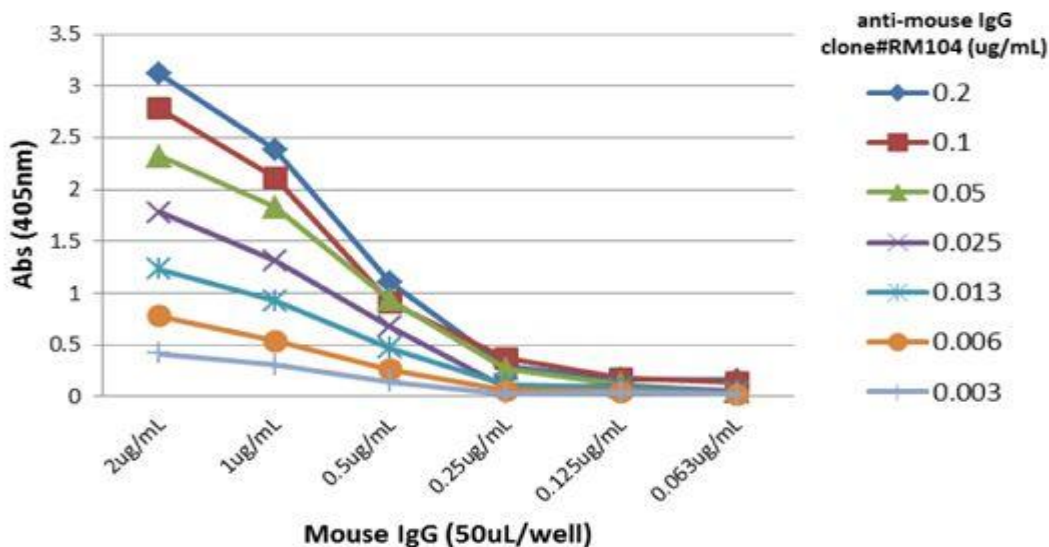
**APPLICATIONS AND USAGE:** ELISA: 0.005 µg/ml-0.2 µg/ml.  
Immunohistochemistry (IHC): 0.5 µg/ml -2 µg/ml.  
Western Blot (WB): 0.1 µg/ml -0.5 µg/ml  
Immunocytochemistry (ICC): 0.5 µg/ml -2 µg/ml.



Western blot of nonreduced (-) and reduced (+) mouse immunoglobulins (20ng/lane), using 0.2µg/mL of Anti-Mouse IgG Rabbit Monoclonal Antibody. This antibody reacts to nonreduced mouse IgG1, IgG2a, IgG2b and IgG3. It showed no cross reactivity with IgM, IgA, or IgE.



ELISA of mouse immunoglobulins shows RM104 reacts to the Fc region of mouse IgG1, IgG2a, IgG2b, and IgG3; no cross reactivity with IgM, IgA, IgE, human or rat IgG. The plate was coated with 50 ng/well of different immunoglobulins. 200 ng/mL, 50 ng/mL, or 10 ng/mL of RM104 was used as the primary antibody. An alkaline phosphatase conjugated anti-rabbit IgG as the secondary antibody.



A titer ELISA of mouse IgG. The plate was coated with different amounts of mouse IgG. A serial dilution of RM104 was used as the primary antibody. An alkaline phosphatase conjugated anti-rabbit IgG as the secondary antibody.

#### RELATED PRODUCTS:

- Anti-Mouse IgG, Rabbit Monoclonal Antibody (Cat# A1781).
- Anti-Mouse IgG1, Rabbit Monoclonal Antibody (Cat# A1782).
- Anti-Mouse IgG2a kappa, Rabbit Monoclonal Antibody (Cat# A1783).
- Anti-Mouse IgG2a, Rabbit Monoclonal Antibody (Cat# A1784).
- Anti-Mouse IgG2b, Rabbit Monoclonal Antibody (Cat# A1785).
- Anti-Mouse IgG3 Rabbit Monoclonal Antibody (Cat# A1786).
- Anti-Mouse IgA, Rabbit Monoclonal Antibody (Cat# A1787)
- Anti-Mouse IgM, Rabbit Monoclonal Antibody (Cat# A1788)
- Anti-Mouse IgG2c Rabbit Monoclonal Antibody (Cat# A1789)

**FOR RESEARCH USE ONLY! Not to be used on humans.**