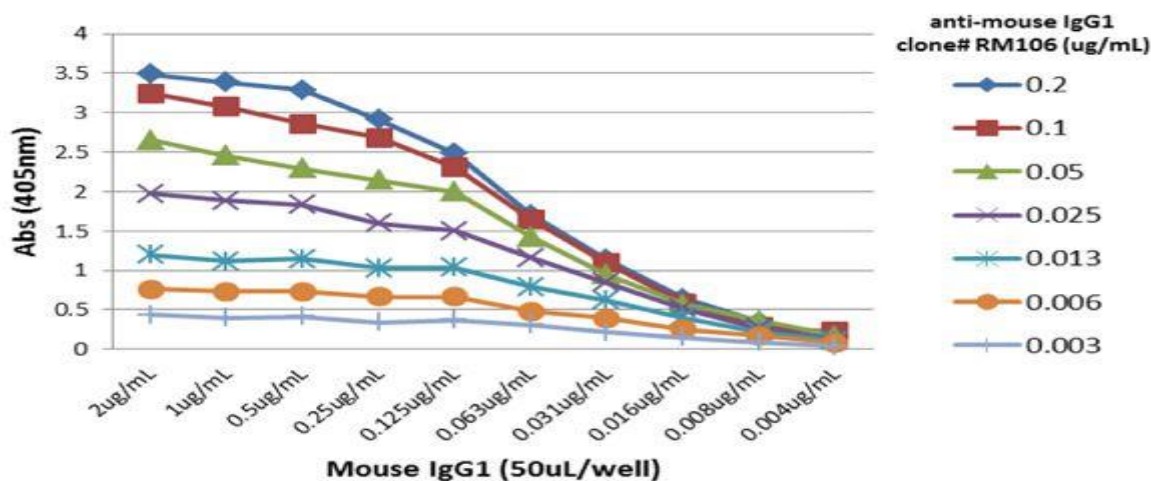


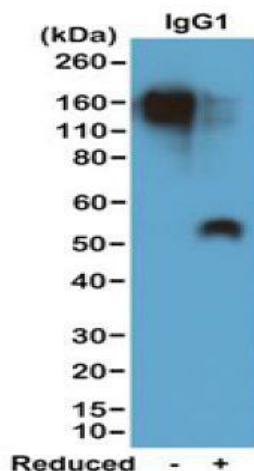
# Anti-Mouse IgG1, Rabbit Monoclonal Antibody

<b>CATALOG NO.:</b>	<b>A1782-50 50 µg.</b>
<b>BACKGROUND DESCRIPTION:</b>	Rabbit monoclonal to Mouse IgG1.
<b>ANTIBODY TYPE:</b>	Monoclonal
<b>CLONE:</b>	RM106
<b>CONCENTRATION:</b>	1.0 mg/ml
<b>HOST/ISOTYPE:</b>	Rabbit / Rabbit IgG.
<b>IMMUNOGEN:</b>	Mouse IgG
<b>SPECIFICITY:</b>	RM106 reacts to the Fc region of mouse IgG1. No cross reactivity with mouse IgG2a, IgG3, IgM, IgA, IgE, human IgG, or rat IgG. The Fc region of RM106 has been engineered to eliminate Fc receptor binding.
<b>PURIFICATION:</b>	Protein A affinity purified from an animal origin-free culture supernatant.
<b>FORM:</b>	Liquid.
<b>FORMULATION:</b>	50% Glycerol/PBS with 1% BSA and 0.09% sodium azide
<b>SPECIES REACTIVITY:</b>	Mouse.
<b>STORAGE CONDITIONS:</b>	Store at -20°C. Avoid repeated freeze / thaw cycles.
<b>APPLICATIONS AND USAGE:</b>	Immunohistochemistry (IHC): 0.5 µg/ml-2 µg/ml. ELISA: 0.005 µg/ml-0.2 µg/ml. Immunocytochemistry (ICC): 0.5 µg/ml-2 µg/ml. Western Blot (WB): 0.1 µg/ml -0.5 µg/ml.

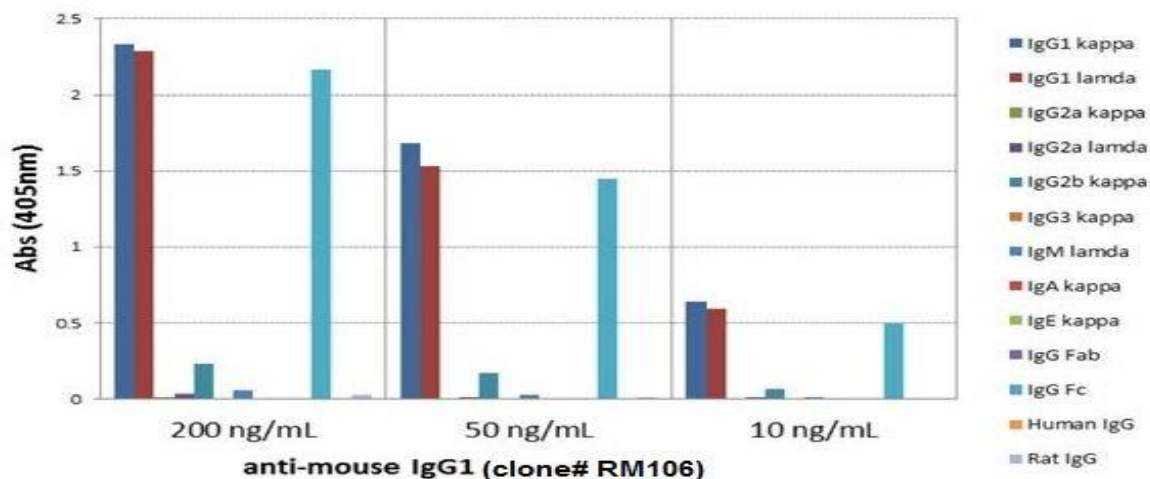


A titer ELISA of mouse IgG1. The plate was coated with different amount of mouse IgG1. A serial dilution of RM106 was used as the primary antibody. An alkaline phosphatase conjugated anti-rabbit IgG as the secondary antibody.





Western blot of nonreduced (-) and reduced (+) mouse IgG1 (20ng/lane), using 0.2ug/mL of Anti-Mouse IgG1, Rabbit Monoclonal Antibody. This antibody reacts to nonreduced IgG1 (~150 kDa) stronger than the reduced  $\gamma$ 1 form (~50 kDa).



ELISA of mouse immunoglobulins shows RM106 reacts to the Fc region of mouse IgG1; no cross reactivity with IgG2a, IgG3, IgM, IgA, IgE, human IgG, or rat IgG. The plate was coated with 50 ng/well of different immunoglobulins. 200 ng/mL, 50 ng/mL, or 10 ng/mL of RM106 was used as the primary antibody. An alkaline phosphatase conjugated anti-rabbit IgG as the secondary antibody.

**RELATED PRODUCTS:**

- Anti-Mouse IgG, Rabbit Monoclonal Antibody (Cat# A1781).
- Anti-Mouse IgG1, Rabbit Monoclonal Antibody (Cat# A1782).
- Anti-Mouse IgG2a kappa, Rabbit Monoclonal Antibody (Cat# A1783).
- Anti-Mouse IgG2a, Rabbit Monoclonal Antibody (Cat# A1784).
- Anti-Mouse IgG2b, Rabbit Monoclonal Antibody (Cat# A1785).
- Anti-Mouse IgG3 Rabbit Monoclonal Antibody (Cat# A1786).
- Anti-Mouse IgA, Rabbit Monoclonal Antibody (Cat# A1787)
- Anti-Mouse IgM, Rabbit Monoclonal Antibody (Cat# A1788)
- Anti-Mouse IgG2c Rabbit Monoclonal Antibody (Cat# A1789)

**FOR RESEARCH USE ONLY! Not to be used on humans.**