

Anti-Mouse IgG2a kappa, Rabbit Monoclonal Antibody

CATALOG NO.: A1783-50 50 µg.

BACKGROUND DESCRIPTION: Rabbit monoclonal to Mouse IgG2a Kappa

ANTIBODY TYPE: Monoclonal

CLONE: RM107

CONCENTRATION: 1.0 mg/ml

HOST/ISOTYPE: Human/Mouse chimeric / Rabbit IgG.

IMMUNOGEN: Mouse IgG.

SPECIFICITY: RM107 reacts to the Fab region of mouse IgG2aκ. No cross reactivity with mouse IgG2aκ, IgG1, IgG3, IgM, IgA, IgE, human IgG, rat IgG, or goat IgG. The Fc region of RM107 has been engineered to eliminate Fc receptor binding.

PURIFICATION: Protein A affinity purified from an animal origin-free culture supernatant.

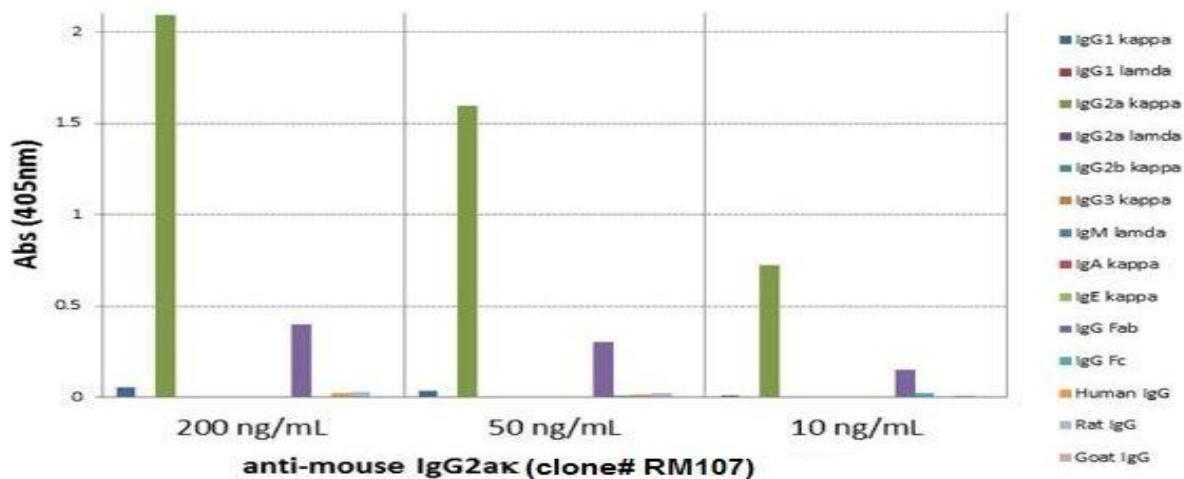
FORM: Liquid.

FORMULATION: 50% Glycerol/PBS with 1% BSA and 0.09% sodium azide

SPECIES REACTIVITY: Mouse.

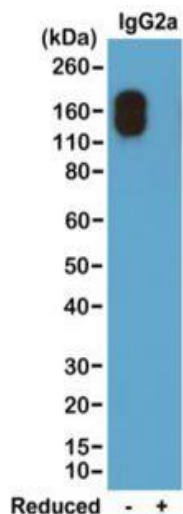
STORAGE CONDITIONS: Store at -20°C. Avoid repeated freeze / thaw cycles.

APPLICATIONS AND USAGE:
 ELISA: 0.005 µg/ml – 0.2 µg/ml.
 Immunocytochemistry (ICC): 0.5 µg/ml-2 µg/ml.
 Western Blot (WB): 0.1 µg/ml-0.5 µg/ml.
 Immunohistochemistry (IHC): 0.5 µg/ml-2 µg/ml.

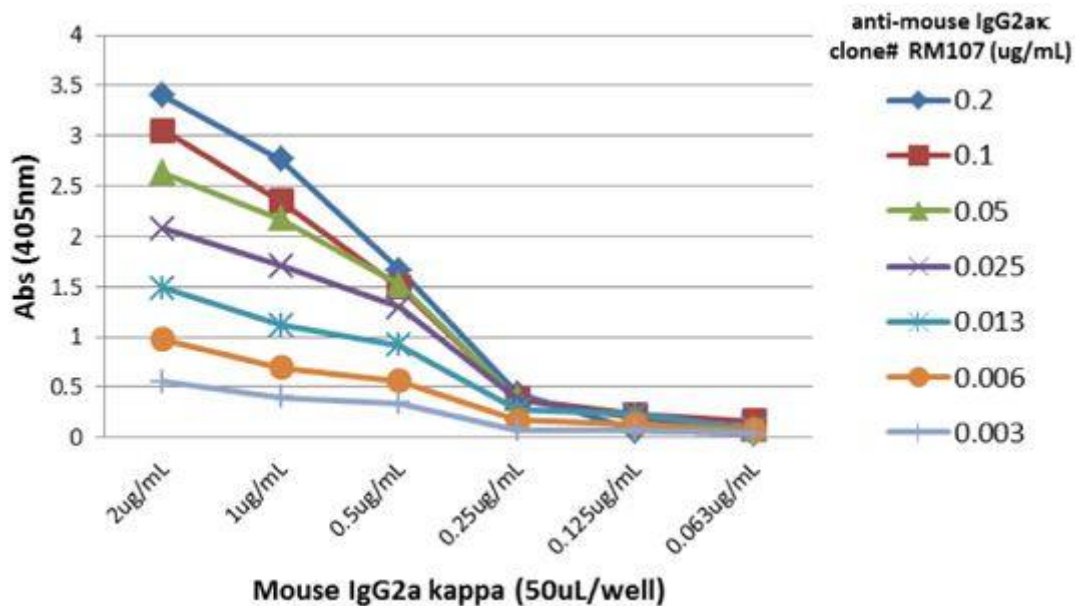


ELISA of mouse immunoglobulins shows RM107 reacts to the Fab region of mouse IgG2aκ; no cross reactivity with IgG2aκ, IgG1, IgG3, IgM, IgA, IgE, human IgG, rat IgG, or goat IgG. The plate was coated with 50 ng/well of different immunoglobulins.





Western blot of nonreduced (-) and reduced (+) mouse IgG2ak (20 ng/lane), using 0.2ug/ml of Anti-Mouse IgG2a kappa Rabbit Monoclonal Antibody. This antibody only reacts to nonreduced Mouse IgG2ak.



A titer ELISA of mouse IgG2ak. The plate was coated with different amounts of mouse IgG2ak. A serial dilution of RM107 was used as the primary antibody. An alkaline phosphatase conjugated anti-rabbit IgG as the secondary antibody.

RELATED PRODUCTS:

- Anti-Mouse IgG, Rabbit Monoclonal Antibody (Cat# A1781).
- Anti-Mouse IgG1, Rabbit Monoclonal Antibody (Cat# A1782).
- Anti-Mouse IgG2a kappa, Rabbit Monoclonal Antibody (Cat# A1783).
- Anti-Mouse IgG2a, Rabbit Monoclonal Antibody (Cat# A1784).
- Anti-Mouse IgG2b, Rabbit Monoclonal Antibody (Cat# A1785).
- Anti-Mouse IgG3 Rabbit Monoclonal Antibody (Cat# A1786).
- Anti-Mouse IgA, Rabbit Monoclonal Antibody (Cat# A1787).
- Anti-Mouse IgM, Rabbit Monoclonal Antibody (Cat# A1788).
- Anti-Mouse IgG2c Rabbit Monoclonal Antibody (Cat# A1789).

FOR RESEARCH USE ONLY! Not to be used on humans.

