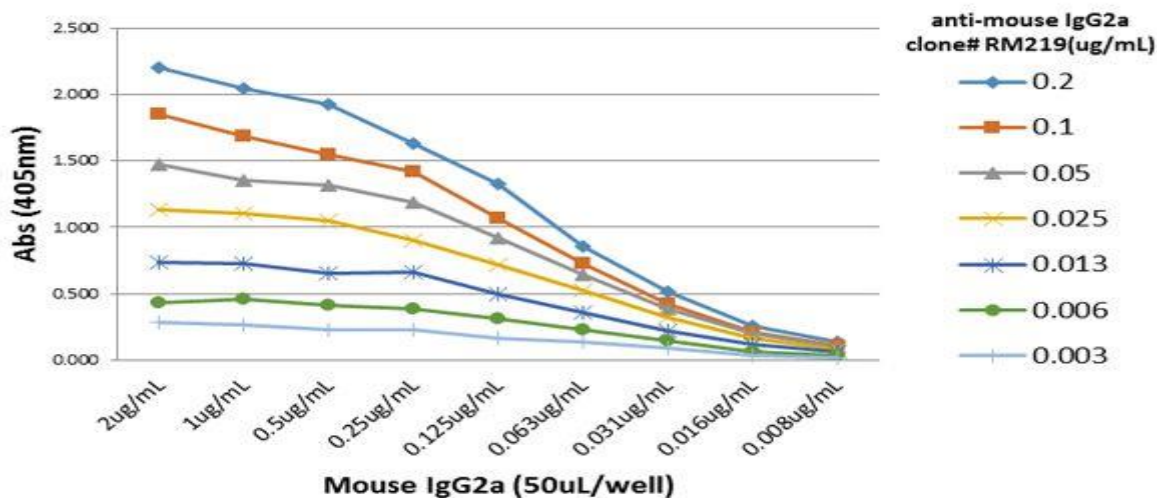


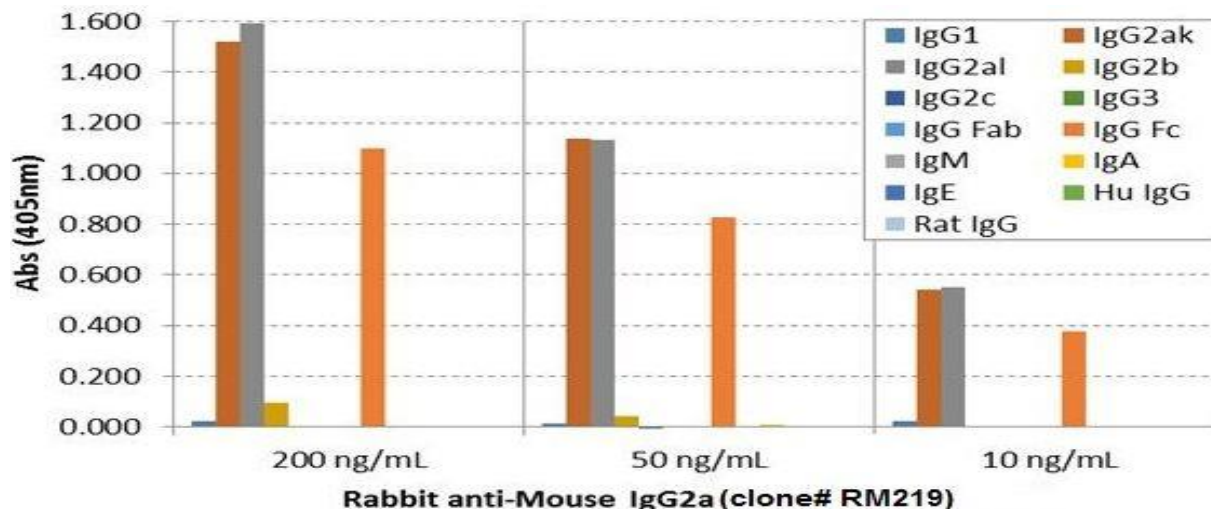
Anti-Mouse IgG2a, Rabbit Monoclonal Antibody

CATALOG NO.:	A1784-50 50 µg.
BACKGROUND DESCRIPTION:	Rabbit monoclonal to Mouse IgG2a.
ANTIBODY TYPE:	Monoclonal
CLONE:	RM219
CONCENTRATION:	1.0 mg/ml
HOST/ISOTYPE:	Rabbit / Rabbit IgG.
IMMUNOGEN:	Mouse IgG2a.
SPECIFICITY:	RM219 reacts to the Fc region of mouse IgG2a. No cross reactivity with mouse IgG1, IgG2b, IgG2c, IgG3, IgM, IgA, IgE, human IgG, or rat IgG.
PURIFICATION:	Protein A affinity purified from an animal origin-free culture supernatant.
FORM:	Liquid.
FORMULATION:	50% Glycerol/PBS with 1% BSA and 0.09% sodium azide
SPECIES REACTIVITY:	Mouse.
STORAGE CONDITIONS:	Store at -20°C. Avoid repeated freeze / thaw cycles.
APPLICATIONS AND USAGE:	ELISA: 0.005 µg/ml –0.2 µg/ml. Western Blot (WB): 0.5 µg/ml-2 µg/ml. Immunohistochemistry (IHC): 0.5 µg/ml-2 µg/ml. Immunocytochemistry (ICC): 0.5 µg/ml-2 µg/ml.

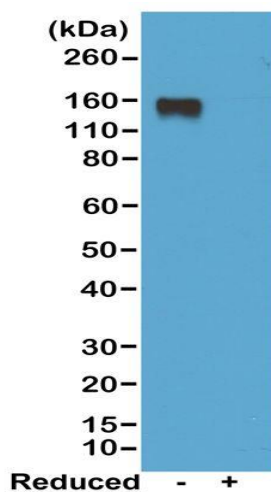


A titer ELISA of mouse IgG2a. The plate was coated with different amounts of mouse IgG2a. A serial dilution of RM219 was used as the primary antibody. An alkaline phosphatase conjugated anti-rabbit IgG as the secondary antibody.





ELISA of mouse immunoglobulins shows RM219 reacts to the Fc region of mouse IgG2a; no cross reactivity with IgG1, IgG2b, IgG2c, IgG3, IgM, IgA, IgE, human IgG, or rat IgG. The plate was coated with 50 ng/well of different immunoglobulins. 200 ng/mL, 50 ng/mL, or 10 ng/mL of RM219 was used as the primary antibody. An alkaline phosphatase conjugated anti-rabbit IgG as the secondary antibody.



Western blot of nonreduced (-) and reduced (+) mouse IgG2a, using 0.5ug/mL of Anti-Mouse IgG2a Rabbit Monoclonal Antibody. This antibody reacts to nonreduced IgG2a (~150 kDa).

RELATED PRODUCTS:

- Anti-Mouse IgG, Rabbit Monoclonal Antibody (Cat# A1781).
- Anti-Mouse IgG1, Rabbit Monoclonal Antibody (Cat# A1782).
- Anti-Mouse IgG2a kappa, Rabbit Monoclonal Antibody (Cat# A1783).
- Anti-Mouse IgG2a, Rabbit Monoclonal Antibody (Cat# A1784).
- Anti-Mouse IgG2b, Rabbit Monoclonal Antibody (Cat# A1785).
- Anti-Mouse IgG3 Rabbit Monoclonal Antibody (Cat# A1786).
- Anti-Mouse IgA, Rabbit Monoclonal Antibody (Cat# A1787).
- Anti-Mouse IgM, Rabbit Monoclonal Antibody (Cat# A1788).
- Anti-Mouse IgG2c Rabbit Monoclonal Antibody (Cat# A1789).

FOR RESEARCH USE ONLY! Not to be used on humans.

