

Anti-Mouse IgG2b, Rabbit Monoclonal Antibody

CATALOG NO.: A1785-50 50 µg.

BACKGROUND DESCRIPTION: Rabbit monoclonal to Mouse IgG2b.

ANTIBODY TYPE: Monoclonal

CLONE: RM108

CONCENTRATION: 1.0 mg/ml

HOST/ISOTYPE: Rabbit / Rabbit IgG.

IMMUNOGEN: Mouse IgG2b.

SPECIFICITY: RM108 reacts to the Fc region of mouse IgG2b. No cross reactivity with mouse IgG1, IgG2a, IgG3, IgM, IgA, IgE, human IgG, rat IgG, or goat IgG. The Fc region of RM108 has been engineered to eliminate Fc receptor binding.

PURIFICATION: Protein A affinity purified from an animal origin-free culture supernatant.

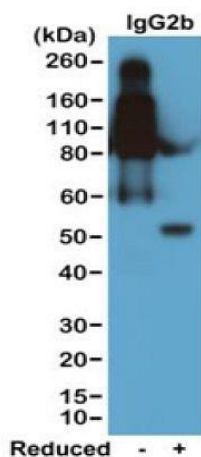
FORM: Liquid.

FORMULATION: 50% Glycerol/PBS with 1% BSA and 0.09% sodium azide

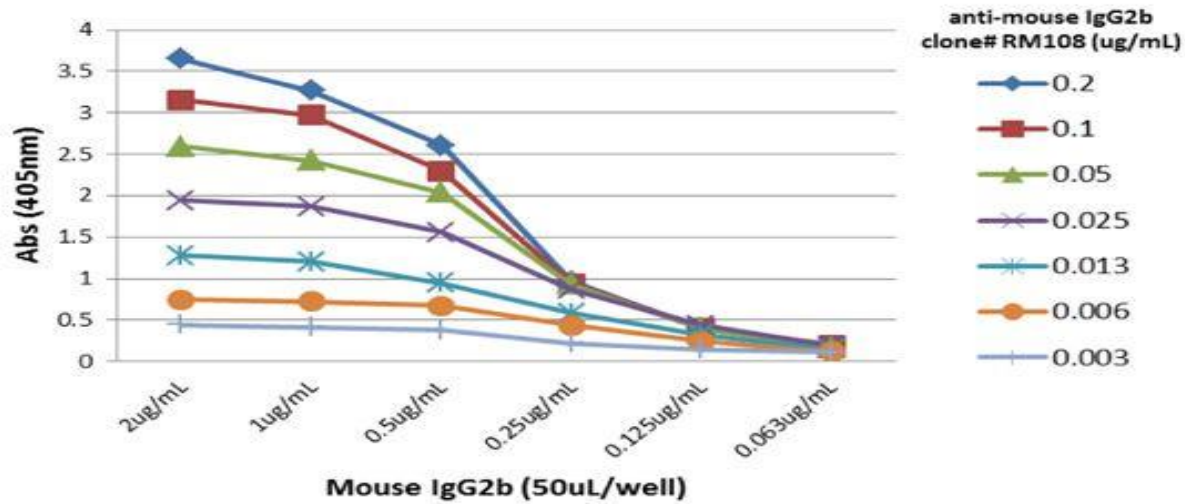
SPECIES REACTIVITY: Mouse.

STORAGE CONDITIONS: Store at -20°C. Avoid repeated freeze / thaw cycles.

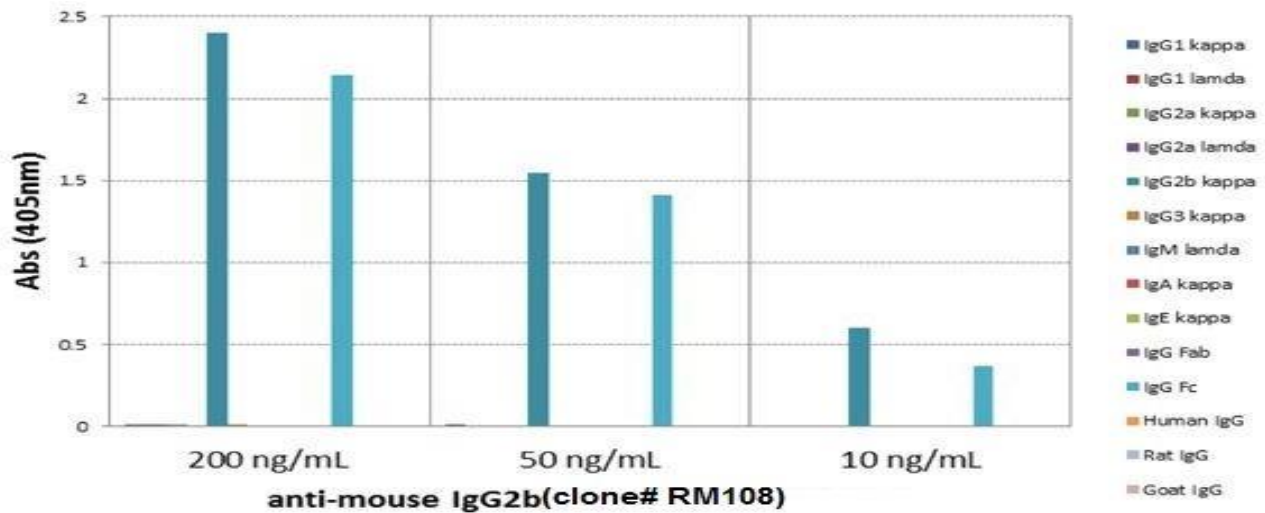
APPLICATIONS AND USAGE: Immunohistochemistry (IHC): 0.5 µg/ml-2 µg/ml.
 Western Blot (WB): 0.1 µg/ml-0.5 µg/ml.
 Immunocytochemistry (ICC): 0.5 µg/ml-2 µg/ml.
 ELISA: 0.005 µg/ml -0.2 µg/ml.



Western blot of nonreduced (-) and reduced (+) mouse IgG2b (20ng/lane), using 0.2µg/mL of Anti-Mouse IgG2b Rabbit Monoclonal Antibody. This antibody reacts to nonreduced IgG2b (~150 kDa) much stronger than the reduced γ2b form (~50 kDa).



A titer ELISA of mouse IgG2b. The plate was coated with different amounts of mouse IgG2b. A serial dilution of RM108 was used as the primary antibody. An alkaline phosphatase conjugated anti-rabbit IgG as the secondary antibody.



ELISA of mouse immunoglobulins shows RM108 reacts to the Fc region of mouse IgG2b; no cross reactivity with IgG1, IgG2a, IgG3, IgM, IgA, IgE, human IgG, rat IgG, or goat IgG. The plate was coated with 50 ng/well of different immunoglobulins. 200 ng/mL, 50 ng/mL, or 10 ng/mL of RM108 was used as the primary antibody. An alkaline phosphatase conjugated anti-rabbit IgG as the secondary antibody.

RELATED PRODUCTS:

- Anti-Mouse IgG, Rabbit monoclonal antibody (Cat# A1781).
- Human CellExp™ IgG2 Fc, Human Recombinant (Cat# P1189).
- Anti-Mouse IgG1, Rabbit Monoclonal Antibody (Cat# A1782).
- Mouse IgG Quantification ELISA Kit (Cat# K4161).
- Anti-Mouse IgG2a, Rabbit Monoclonal Antibody (Cat# A1784).
- Anti-CD16/CD32, Rabbit IgG Antibody (Cat# A1107).
- Anti-Mouse IgG2a kappa, Rabbit Monoclonal Antibody (Cat# A1783).
- Anti-CD16/CD32, Rat IgG2b Antibody (Cat# A1106).

FOR RESEARCH USE ONLY! Not to be used on humans.