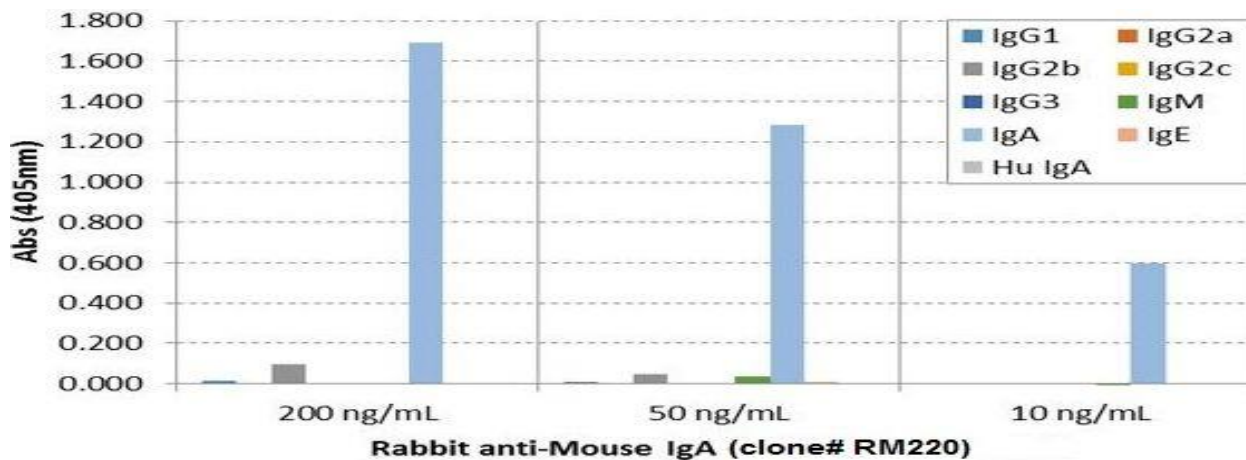


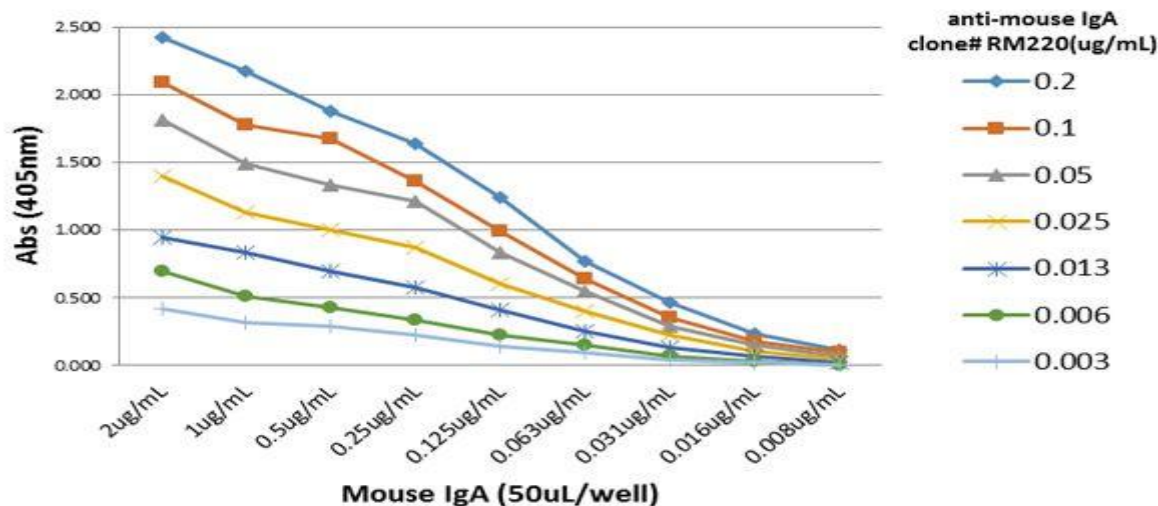
# Anti-Mouse IgA, Rabbit Monoclonal Antibody

<b>CATALOG NO.:</b>	<b>A1787-50 50 µg.</b>
<b>BACKGROUND DESCRIPTION:</b>	Rabbit monoclonal to Mouse IgA.
<b>ANTIBODY TYPE:</b>	Monoclonal
<b>CLONE:</b>	RM220
<b>CONCENTRATION:</b>	1.0 mg/ml
<b>HOST/ISOTYPE:</b>	Rabbit / Rabbit IgG.
<b>IMMUNOGEN:</b>	Mouse IgA.
<b>SPECIFICITY:</b>	RM220 specifically reacts to mouse IgA. No cross reactivity with mouse IgG1, IgG2a, IgG2b, IgG2c, IgG3, IgM, IgE, or human IgA.
<b>PURIFICATION:</b>	Protein A affinity purified from an animal origin-free culture supernatant.
<b>FORM:</b>	Liquid.
<b>FORMULATION:</b>	50% Glycerol/PBS with 1% BSA and 0.09% sodium azide
<b>SPECIES REACTIVITY:</b>	Mouse.
<b>STORAGE CONDITIONS:</b>	Store at -20°C. Avoid repeated freeze / thaw cycles.
<b>APPLICATIONS AND USAGE:</b>	Immunocytochemistry (ICC): 0.5 µg/ml-2 µg/ml. Western Blot (WB): 0.5 µg/ml-2 µg/ml. Immunohistochemistry (IHC): 0.5 µg/ml-2 µg/ml. ELISA: 0.005 µg/ml –0.2 µg/ml.

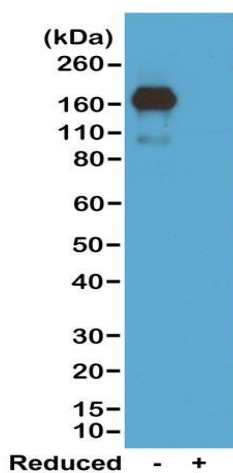


ELISA of mouse immunoglobulins shows RM220 reacts to mouse IgA. No cross reactivity with mouse IgG1, IgG2a, IgG2b, IgG2c, IgG3, IgM, IgE, or human IgA. The plate was coated with 50 ng/well of different immunoglobulins. 200 ng/mL, 50 ng/mL, or 10 ng/mL of RM220 was used as the primary antibody. An alkaline phosphatase conjugated anti- rabbit IgG as the secondary antibody.

05/19



A titer ELISA of mouse IgA. The plate was coated with different amount of mouse IgA. A serial dilution of RM220 was used as the primary antibody. An alkaline phosphatase conjugated anti-rabbit IgG as the secondary antibody.



Western blot of nonreduced (-) and reduced (+) mouse IgA, using 0.5ug/mL of Anti-Mouse IgA Rabbit Monoclonal Antibody. This antibody reacts to nonreduced IgA.

**RELATED PRODUCTS:**

- Anti-Mouse IgG, Rabbit Monoclonal Antibody (Cat# A1781).
- Anti-Mouse IgG1, Rabbit Monoclonal Antibody (Cat# A1782).
- Anti-Mouse IgG2a kappa, Rabbit Monoclonal Antibody (Cat# A1783).
- Anti-Mouse IgG2a, Rabbit Monoclonal Antibody (Cat# A1784).
- Anti-Mouse IgG2b, Rabbit Monoclonal Antibody (Cat# A1785).
- Anti-Mouse IgG3 Rabbit Monoclonal Antibody (Cat# A1786).
- Anti-Mouse IgA, Rabbit Monoclonal Antibody (Cat# A1787)
- Anti-Mouse IgM, Rabbit Monoclonal Antibody (Cat# A1788)
- Anti-Mouse IgG2c Rabbit Monoclonal Antibody (Cat# A1789)

**FOR RESEARCH USE ONLY! Not to be used on humans.**

