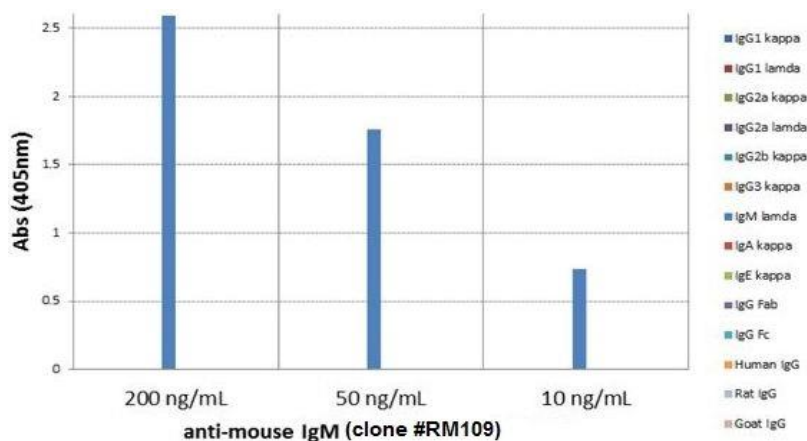


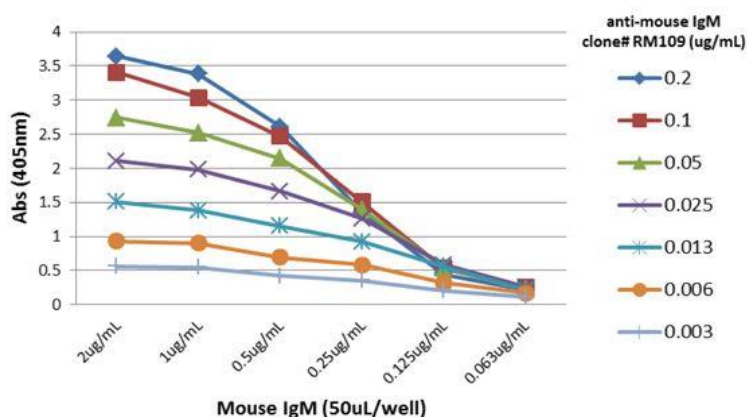
Anti-Mouse IgM, Rabbit Monoclonal Antibody

CATALOG NO.:	A1788-50 (50 µg)
BACKGROUND DESCRIPTION:	Rabbit monoclonal to Mouse IgM
ANTIBODY TYPE:	Monoclonal
CLONE:	RM109
CONCENTRATION:	1 mg/ml
HOST/ISOTYPE:	Rabbit / Rabbit IgG
IMMUNOGEN:	Mouse IgM
SPECIFICITY:	RM109 reacts to mouse IgM. No cross reactivity with mouse IgG1, IgG2a, IgG2b, IgG3, IgA, IgE, human IgG, rat IgG, or goat IgG
PURIFICATION:	Protein A affinity purified from an animal origin-free culture supernatant
FORM:	Liquid
FORMULATION:	50% Glycerol/PBS with 1% BSA and 0.09% sodium azide
SPECIES REACTIVITY:	Mouse
STORAGE CONDITIONS:	Store at -20°C. Avoid repeated freeze / thaw cycles
APPLICATIONS AND USAGE:	ELISA: 0.005 µg/ml –0.2 µg/ml

This information is only intended as a guide. The optimal dilutions must be determined by the user



ELISA of mouse immunoglobulins shows RM109 reacts to mouse IgM; no cross reactivity with IgG1, IgG2a, IgG2b, IgG3, IgA, IgE, human IgG, rat IgG, or goat IgG. The plate was coated with 50 ng/well of different immunoglobulins. 200 ng/mL, 50 ng/mL, or 10 ng/mL of RM109 was used as the primary antibody. An alkaline phosphatase conjugated anti- rabbit IgG as the secondary antibody.



A titer ELISA of mouse IgM. The plate was coated with different amounts of mouse IgM. A serial dilution of RM109 was used as the primary antibody. An alkaline phosphatase conjugated anti-rabbit IgG as the secondary antibody.

RELATED PRODUCTS:

- QuickDetect™ IgM (Human) ELISA Kit (Cat# E4479)
- Brucella IgM ELISA Kit (Cat# E4710)
- QuickDetect™ IgM (Rat) ELISA Kit (Cat# E4482)
- QuickDetect™ IgM (Mouse) ELISA Kit (Cat# E4480)
- Anti-Mouse IgG, Rabbit Monoclonal Antibody (Cat# A1781)
- Anti-Mouse IgG1, Rabbit Monoclonal Antibody (Cat# A1782)
- Anti-Mouse IgG2a kappa, Rabbit Monoclonal Antibody (Cat# A1783)
- Anti-Mouse IgG2a, Rabbit Monoclonal Antibody (Cat# A1784)
- Anti-Mouse IgG2b, Rabbit Monoclonal Antibody (Cat# A1785)
- Anti-Mouse IgG3 Rabbit Monoclonal Antibody (Cat# A1786)
- Anti-Mouse IgA, Rabbit Monoclonal Antibody (Cat# A1787)
- Anti-Mouse IgM, Rabbit Monoclonal Antibody (Cat# A1788)
- Anti-Mouse IgG2c Rabbit Monoclonal Antibody (Cat# A1789)

FOR RESEARCH USE ONLY! Not to be used on humans.