

Anti-Mouse IgG2c Rabbit Monoclonal Antibody

CATALOG NO.: A1789-50 50 µg.

BACKGROUND DESCRIPTION: Rabbit monoclonal to Mouse IgG2c.

ANTIBODY TYPE: Monoclonal

CLONE: RM223

CONCENTRATION: 1.0 mg/mL

HOST/ISOTYPE: Rabbit / Rabbit IgG.

IMMUNOGEN: Mouse IgG2c.

SPECIFICITY: RM223 reacts to the Fc region of mouse IgG2c. No cross reactivity with mouse IgG1, IgG2a, IgG2b, IgG3, IgM, IgA, IgE, human IgG, or rat IgG.

PURIFICATION: Protein A affinity purified from an animal origin-free culture supernatant.

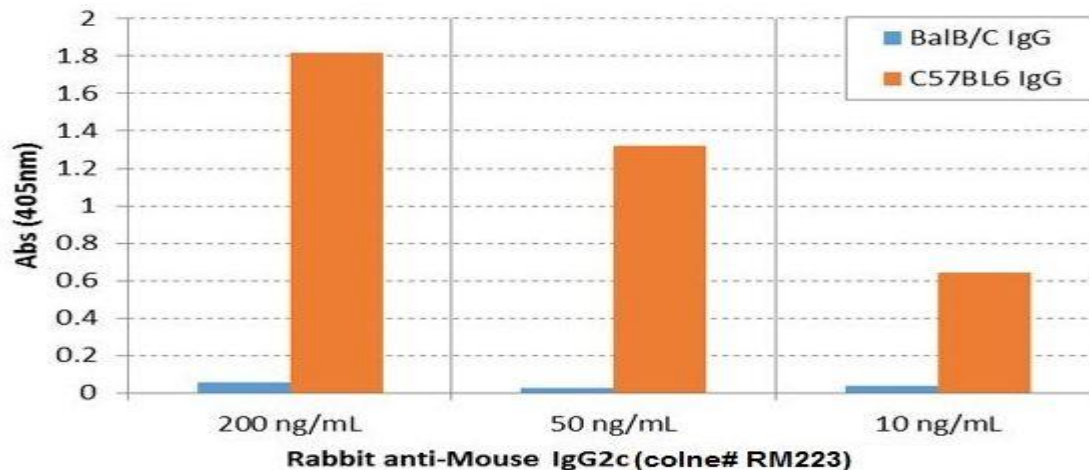
FORM: Liquid.

FORMULATION: 50% Glycerol/PBS with 1% BSA and 0.09% sodium azide

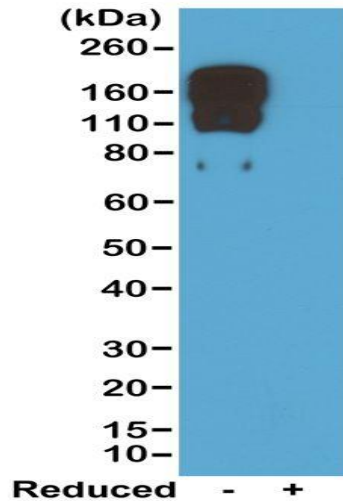
SPECIES REACTIVITY: Mouse.

STORAGE CONDITIONS: Store at -20°C. Avoid repeated freeze / thaw cycles.

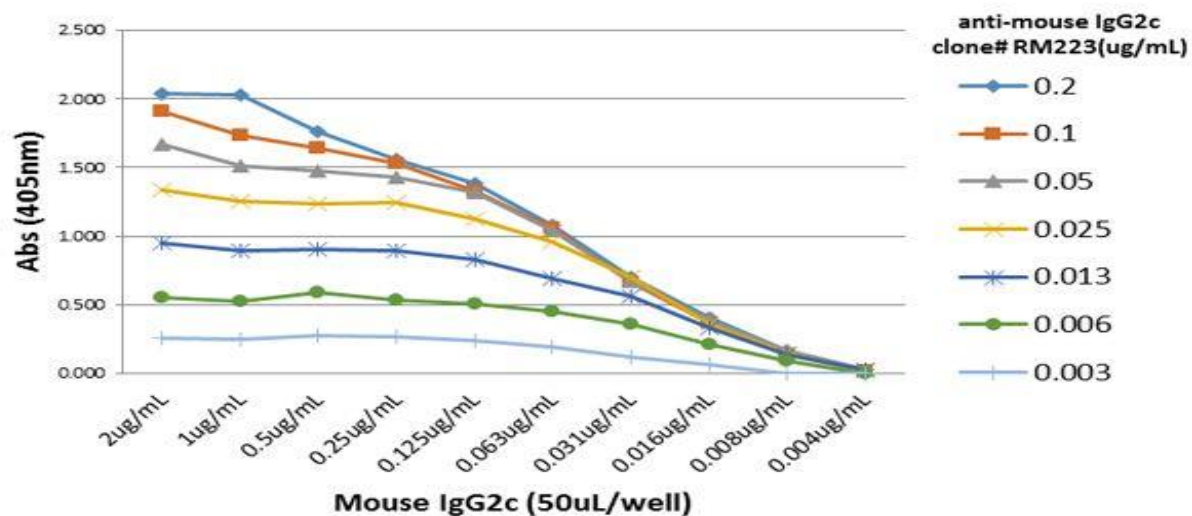
APPLICATIONS AND USAGE: Immunocytochemistry (ICC): 0.5 µg/mL-2 µg/ml.
 ELISA: 0.01 µg/mL – 0.2 µg/ml.
 Western Blot (WB): 0.5 µg/mL-2 µg/ml.
 Immunohistochemistry (IHC): 0.5 µg/mL-2 µg/ml.



ELISA of IgG from BalB/C and C57BL6 shows RM223 reacts to C57BL6 IgG containing IgG2c, and does not react to BalB/C IgG containing IgG2a. 200 ng/mL, 50 ng/mL, or 10 ng/mL of RM223 was used as the primary antibody. An alkaline phosphatase conjugated anti-rabbit IgG as the secondary antibody.



Western blot of nonreduced (-) and reduced (+) mouse IgG2c, using 0.5ug/mL of Anti-Mouse IgG2c Rabbit Monoclonal Antibody. This antibody reacts to nonreduced IgG2c.



A titer ELISA of mouse IgG2c. The plate was coated with different amounts of mouse IgG2c. A serial dilution of RM223 was used as the primary antibody. An alkaline phosphatase conjugated anti-rabbit IgG as the secondary antibody.

RELATED PRODUCTS:

- Anti-Mouse IgG, Rabbit Monoclonal Antibody (Cat# A1781).
- Anti-Mouse IgG1, Rabbit Monoclonal Antibody (Cat# A1782).
- Anti-Mouse IgG2a kappa, Rabbit Monoclonal Antibody (Cat# A1783).
- Anti-Mouse IgG2a, Rabbit Monoclonal Antibody (Cat# A1784).
- Anti-Mouse IgG2b, Rabbit Monoclonal Antibody (Cat# A1785).
- Anti-Mouse IgG3 Rabbit Monoclonal Antibody (Cat# A1786).
- Anti-Mouse IgA, Rabbit Monoclonal Antibody (Cat# A1787).
- Anti-Mouse IgM, Rabbit Monoclonal Antibody (Cat# A1788).
- Anti-Mouse IgG2c Rabbit Monoclonal Antibody (Cat# A1789).

FOR RESEARCH USE ONLY! Not to be used on humans.