

# Anti-Human Gamma Heavy Chain, Rabbit Monoclonal Antibody

**CATALOG NO.:** A1790-50 50 µg.

**BACKGROUND DESCRIPTION:** Rabbit Monoclonal to Human Gamma Heavy Chain.

**ANTIBODY TYPE:** Monoclonal

**CLONE:** RM116

**CONCENTRATION:** 1.0 mg/mL

**HOST/ISOTYPE:** Rabbit / Rabbit IgG.

**IMMUNOGEN:** Human IgG.

**SPECIFICITY:** This antibody reacts to the Fc region of all gamma heavy chains of human immunoglobulins, including  $\gamma 1$ ,  $\gamma 2$ ,  $\gamma 3$ , and  $\gamma 4$ . No cross reactivity with human IgM, IgA, IgD, IgE, mouse IgG, rat IgG, or goat IgG.

**PURIFICATION:** Protein A affinity purified from an animal origin-free culture supernatant.

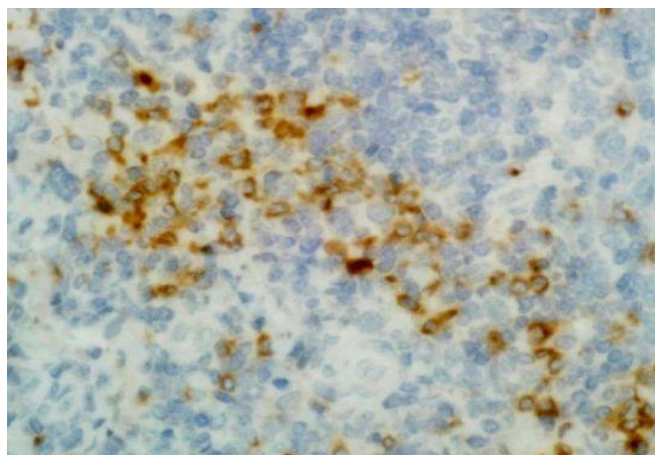
**FORM:** Liquid.

**FORMULATION:** 50% Glycerol/PBS with 1% BSA and 0.09% sodium azide

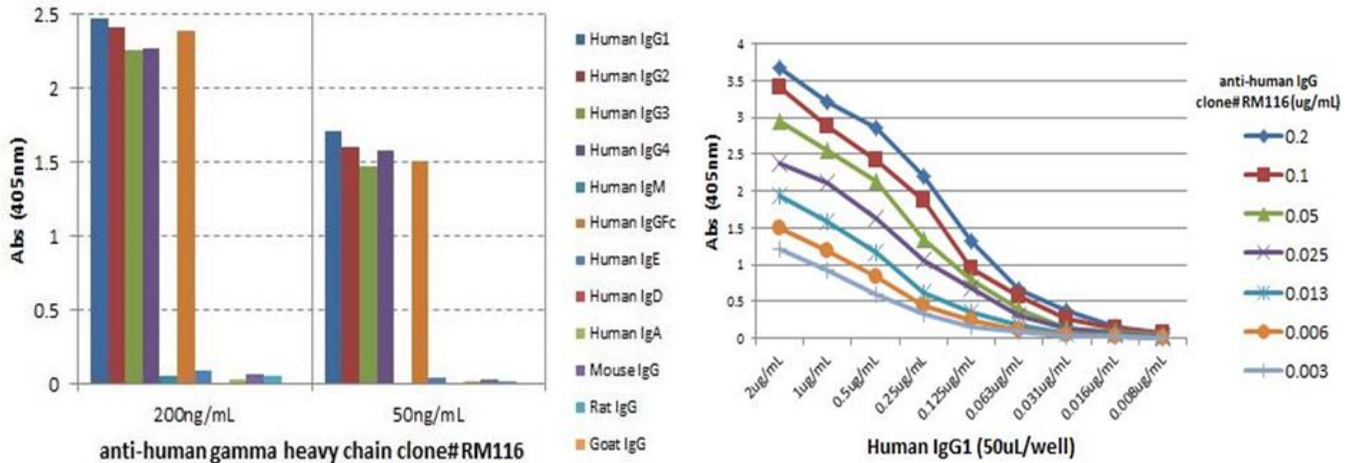
**SPECIES REACTIVITY:** Human.

**STORAGE CONDITIONS:** Store at -20°C. Avoid repeated freeze / thaw cycles.

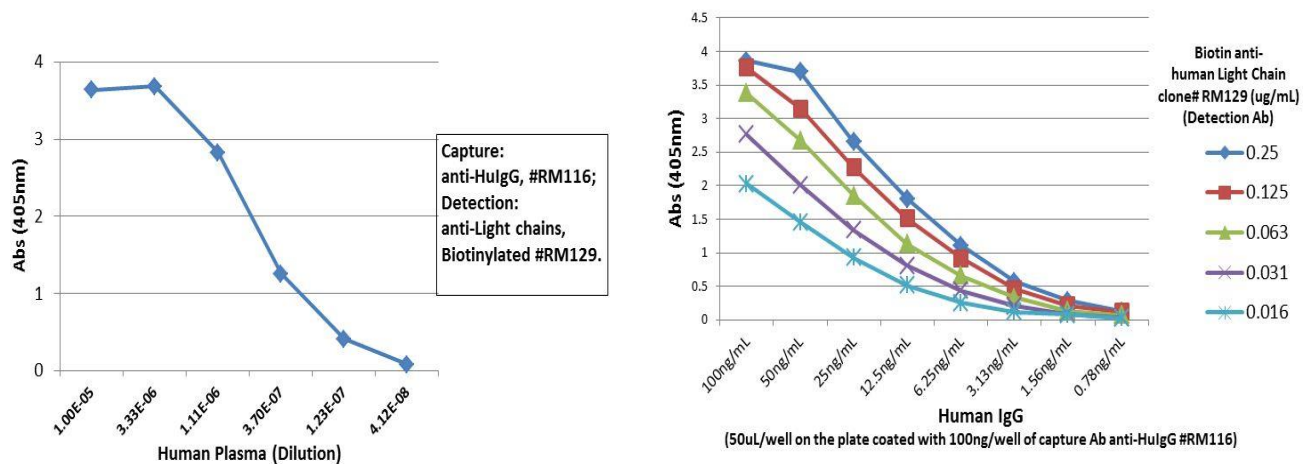
**APPLICATIONS AND USAGE:** Immunocytochemistry (ICC): 0.5 µg/mL-2 µg/ml  
 0.05 µg/mL – 0.2 µg/mL (for Detection).  
 ELISA: 50 ng/well – 200 ng/well (for Capture).  
 Immunohistochemistry (IHC): 0.5 µg/mL-2 µg/ml



Immunohistochemistry of Human Tonsil using Anti-Gamma Heavy Chain Antibody RM116.



Antigen coated ELISA using RM116 as the primary antibody. An alkaline phosphatase conjugated anti-rabbit IgG as the secondary antibody.



Sandwich ELISA using RM116 as the capture antibody (100ng/well), and Biotinylated antihuman light chains ( $\kappa+\lambda$ ) antibody RM129 as the detection antibody, followed by an alkaline phosphatase conjugated streptavidin.

#### RELATED PRODUCTS:

- Anti-Mouse IgG, Rabbit Monoclonal Antibody (Cat# A1781).
- Anti-Mouse IgG1, Rabbit Monoclonal Antibody (Cat# A1782).
- Anti-Mouse IgG2a kappa, Rabbit Monoclonal Antibody (Cat# A1783).
- Anti-Mouse IgG2a, Rabbit Monoclonal Antibody (Cat# A1784).
- Anti-Mouse IgG2b, Rabbit Monoclonal Antibody (Cat# A1785).
- Anti-Mouse IgG3 Rabbit Monoclonal Antibody (Cat# A1786).
- Anti-Mouse IgA, Rabbit Monoclonal Antibody (Cat# A1787).
- Anti-Mouse IgM, Rabbit Monoclonal Antibody (Cat# A1788).
- Anti-Mouse IgG2c Rabbit Monoclonal Antibody (Cat# A1789).

**FOR RESEARCH USE ONLY! Not to be used on humans.**