

Anti-Human Kappa Light Chain, Rabbit Monoclonal Antibody

CATALOG NO.: A1791-50 50 µg.

BACKGROUND DESCRIPTION: Rabbit monoclonal to Human Kappa Light Chain.

ALTERNATE NAMES: Ig kappa chain C region.
Immunoglobulin kappa constant.

ANTIBODY TYPE: Monoclonal

CLONE: RM126

CONCENTRATION: 1.0 mg/ml

HOST/ISOTYPE: Rabbit / Rabbit IgG.

IMMUNOGEN: Human IgG.

SPECIFICITY: RM126 reacts to the kappa light chain of human immunoglobulins, and does not react to the lambda light chain. RM126 does not react to monkey (Cyno or Rhesus) IgG, mouse IgG, rat IgG, or goat IgG.

PURIFICATION: Protein A affinity purified from an animal origin-free culture supernatant.

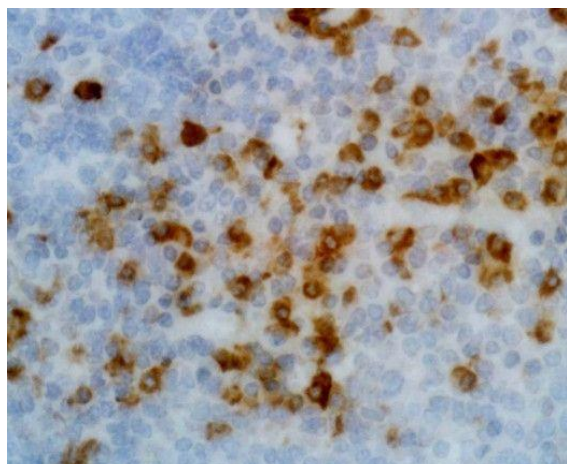
FORM: Liquid.

FORMULATION: 50% Glycerol/PBS with 1% BSA and 0.09% sodium azide

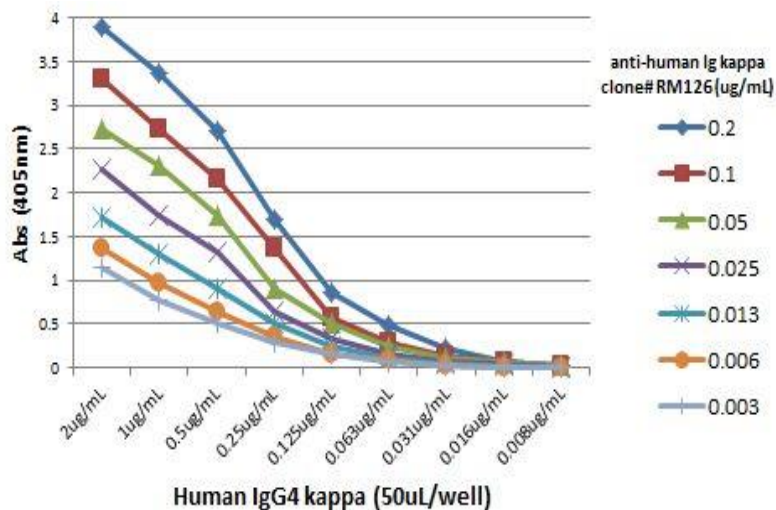
SPECIES REACTIVITY: Human.

STORAGE CONDITIONS: Store at -20°C. Avoid repeated freeze / thaw cycles.

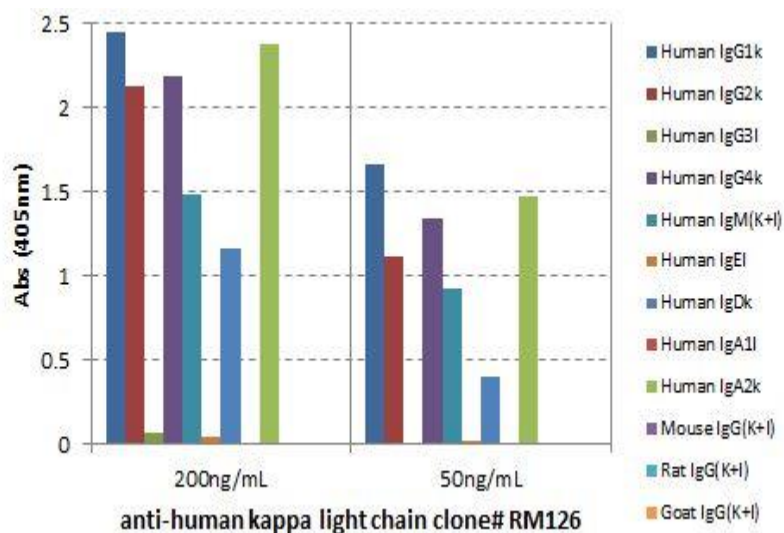
APPLICATIONS AND USAGE: ELISA: 0.05 µg/ml – 0.2 µg/ml.
Immunocytochemistry (ICC): 0.5 µg/ml -2 µg/ml.
Immunohistochemistry (IHC): 0.5 µg/ml -2 µg/ml.



Immunohistochemically staining of formalin fixed and paraffin embedded human tonsil tissue section using anti-human Ig kappa light chain rabbit monoclonal antibody (Clone RM126).



A titer ELISA using RM126. The plate was coated with different amounts of human IgG4k. A serial dilution of RM126 was used as the primary antibody, followed by an alkaline phosphatase conjugated anti-rabbit IgG as the secondary antibody.



ELISA showing RM126 reacts only to the kappa light chain of human immunoglobulins, and not to lambda light chain, mouse IgG, rat IgG, or goat IgG.

RELATED PRODUCTS:

- Anti-Mouse IgG, Rabbit Monoclonal Antibody (Cat# A1781).
- Anti-Mouse IgG1, Rabbit Monoclonal Antibody (Cat# A1782).
- Anti-Mouse IgG2a kappa, Rabbit Monoclonal Antibody (Cat# A1783).
- Anti-Mouse IgG2a, Rabbit Monoclonal Antibody (Cat# A1784).
- Anti-Mouse IgG2b, Rabbit Monoclonal Antibody (Cat# A1785).
- Anti-Mouse IgG3 Rabbit Monoclonal Antibody (Cat# A1786).
- Anti-Mouse IgA, Rabbit Monoclonal Antibody (Cat# A1787)
- Anti-Mouse IgM, Rabbit Monoclonal Antibody (Cat# A1788)
- Anti-Mouse IgG2c Rabbit Monoclonal Antibody (Cat# A1789)

FOR RESEARCH USE ONLY! Not to be used on humans.