

# Anti-Human Lambda Light Chain, Rabbit Monoclonal Antibody

<b>CATALOG NO.:</b>	A1792-50 50 µg.
<b>BACKGROUND DESCRIPTION:</b>	Rabbit monoclonal to Human Lambda Light Chain.
<b>ANTIBODY TYPE:</b>	Monoclonal
<b>CLONE:</b>	RM127
<b>CONCENTRATION:</b>	1.0 mg/ml
<b>HOST/ISOTYPE:</b>	Rabbit / Rabbit IgG.
<b>IMMUNOGEN:</b>	Human IgG.
<b>SPECIFICITY:</b>	RM127 reacts to the lambda light chain of human immunoglobulins, and does not react to the kappa light chain. RM127 does not react to monkey (Cyno or Rhesus) IgG, mouse IgG, rat IgG, or goat IgG.
<b>PURIFICATION:</b>	Protein A affinity purified from an animal origin-free culture supernatant.
<b>FORM:</b>	Liquid.
<b>FORMULATION:</b>	50% Glycerol/PBS with 1% BSA and 0.09% sodium azide
<b>SPECIES REACTIVITY:</b>	Human.
<b>STORAGE CONDITIONS:</b>	Store at -20°C. Avoid repeated freeze / thaw cycles.
<b>APPLICATIONS AND USAGE:</b>	Immunohistochemistry (IHC): 0.5 µg/ml -2 µg/ml. ELISA: 0.05 µg/ml – 0.2 µg/ml. Immunocytochemistry (ICC): 0.5 µg/ml -2 µg/ml.

A

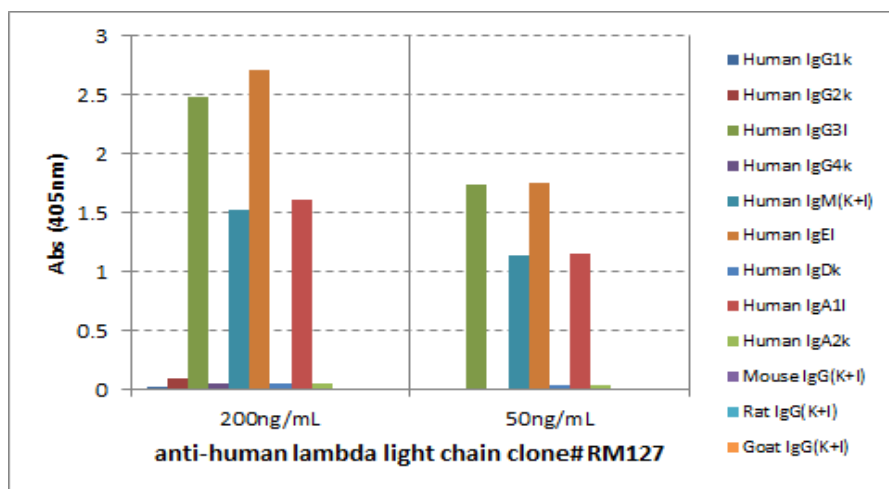
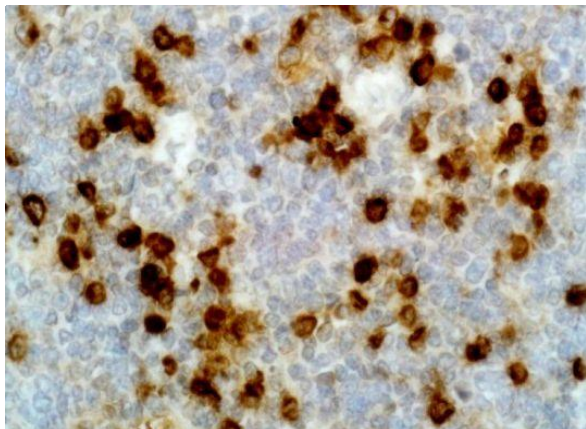


Fig. A. ELISA showing RM127 reacts only to the lambda light chain of human immunoglobulins, and not

B



C

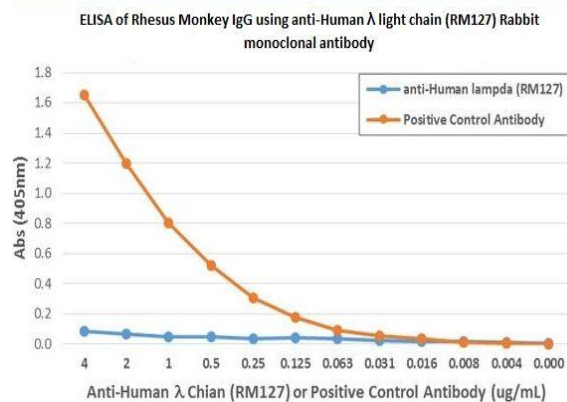


Fig. B. Immunohistochemical staining of formalin fixed and paraffin embedded human tonsil tissue section using anti-human Ig lambda light chain rabbit monoclonal antibody (Clone RM127).

Fig. C. ELISA showing RM127 does not react to monkey IgG. The plate was coated with Rhesus monkey IgG. A serial dilution of RM127 and a monkey IgG binding antibody (positive control) was used as the detection antibody.

D

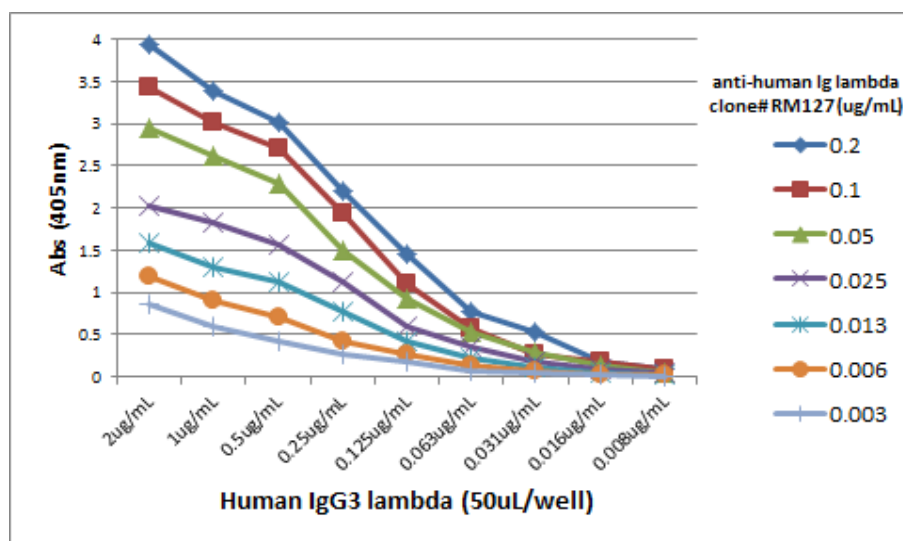


Fig. D. A titer ELISA using RM127. The plate was coated with different amounts of human IgG3 $\lambda$ . A serial dilution of RM127 was used as the primary antibody, followed by an alkaline phosphatase conjugated anti-rabbit IgG as the secondary antibody.

• **RELATED PRODUCTS:**

- Anti-Mouse IgG, Rabbit Monoclonal Antibody (Cat# A1781).
- Anti-Mouse IgG1, Rabbit Monoclonal Antibody (Cat# A1782).
- Anti-Mouse IgG2a kappa, Rabbit Monoclonal Antibody (Cat# A1783).
- Anti-Mouse IgG2a, Rabbit Monoclonal Antibody (Cat# A1784).
- Anti-Mouse IgG2b, Rabbit Monoclonal Antibody (Cat# A1785).
- Anti-Mouse IgG3 Rabbit Monoclonal Antibody (Cat# A1786).

**FOR RESEARCH USE ONLY! Not to be used on humans.**