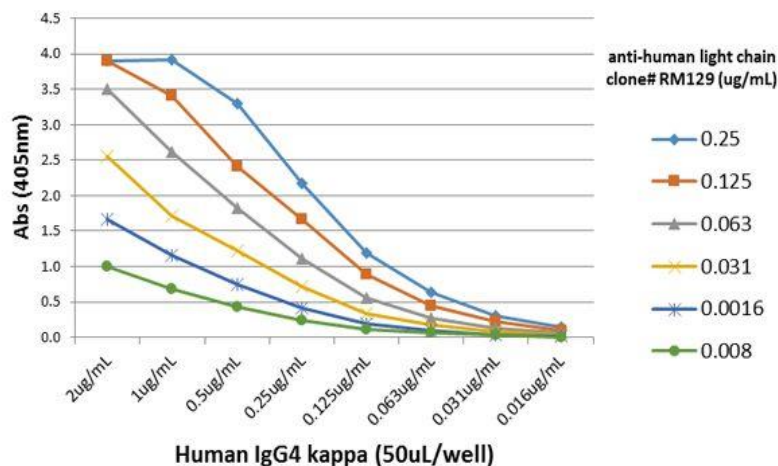
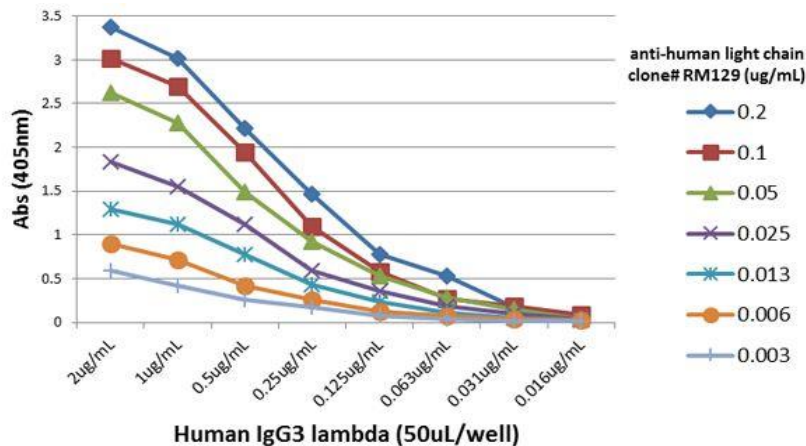


Anti-Human Ig Light Chains, Rabbit Monoclonal Antibody

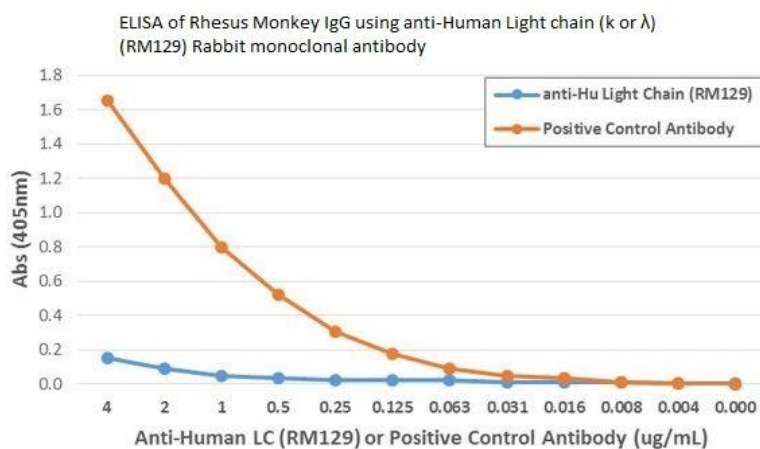
CATALOG NO.:	A1793-50 50 µg.
BACKGROUND DESCRIPTION:	Rabbit monoclonal to Human Immunoglobulin Light Chains.
ANTIBODY TYPE:	Monoclonal
CLONE:	RM129
CONCENTRATION:	1.0 mg/ml
HOST/ISOTYPE:	Rabbit / Rabbit IgG.
IMMUNOGEN:	Human IgG.
PURIFICATION:	Protein A affinity purified from an animal origin-free culture supernatant.
FORM:	Liquid.
FORMULATION:	50% Glycerol/PBS with 1% BSA and 0.09% sodium azide
SPECIES REACTIVITY:	Human.
STORAGE CONDITIONS:	Store at -20°C; Store at -20°C. Avoid repeated freeze / thaw cycles..
APPLICATIONS AND USAGE:	Immunohistochemistry (IHC): 0.5 µg/ml -2 µg/ml. Immunocytochemistry (ICC): 0.5 µg/ml -2 µg/ml. ELISA: 0.1 µg/ml – 0.5 µg/ml.



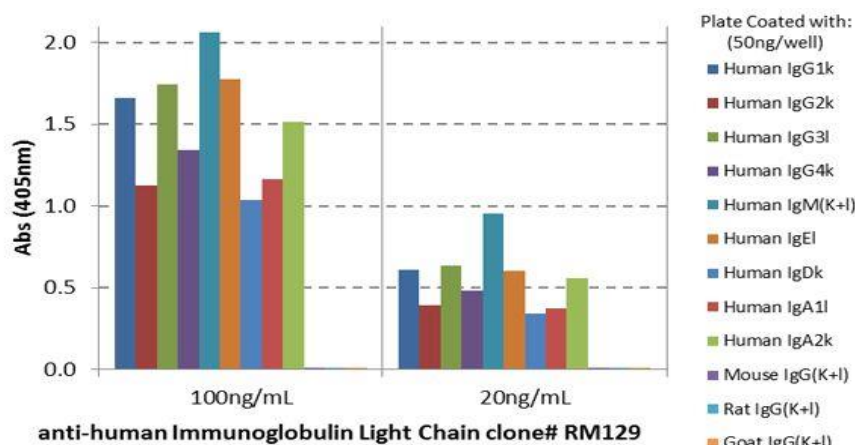
A titer ELISA using RM129. The plate was coated with different amounts of human IgG4k. A serial dilution of RM129 was used as the primary antibody, followed by an alkaline phosphatase conjugated anti-rabbit IgG as the secondary antibody..



A titer ELISA using RM129. The plate was coated with different amounts of human IgG3λ. A serial dilution of RM129 was used as the primary antibody, followed by an alkaline phosphatase conjugated anti-rabbit IgG as the secondary antibody.



ELISA shows that clone RM129 does not react to monkey IgG. The plate was coated with Rhesus monkey IgG. A serial dilution of RM129 and a monkey IgG reacting antibody (positive control) was used as the detection antibodies.



ELISA shows that clone RM129 reacts only to the kappa and lambda light chains in all human immunoglobulins, and does not react to mouse IgG, rat IgG, or goat IgG.

RELATED PRODUCTS:

- Anti-Mouse IgG, Rabbit Monoclonal Antibody (Cat# A1781).
- Anti-Mouse IgG1, Rabbit Monoclonal Antibody (Cat# A1782).
- Anti-Mouse IgG2a kappa, Rabbit Monoclonal Antibody (Cat# A1783).
- Anti-Mouse IgG2a, Rabbit Monoclonal Antibody (Cat# A1784).
- Anti-Mouse IgG2b, Rabbit Monoclonal Antibody (Cat# A1785).

FOR RESEARCH USE ONLY! Not to be used on humans.

