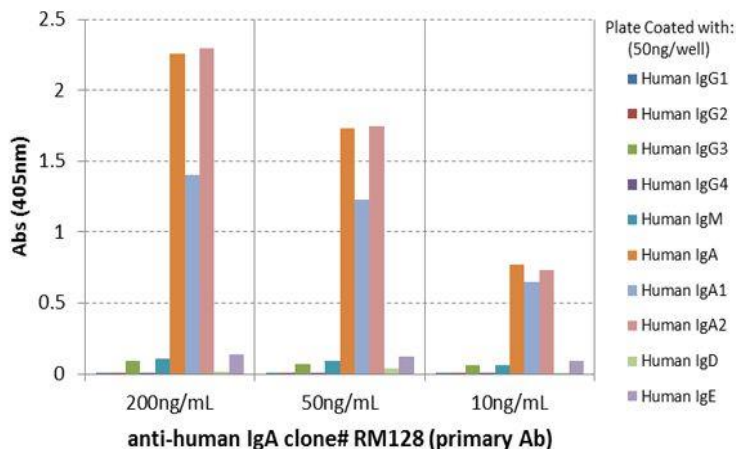
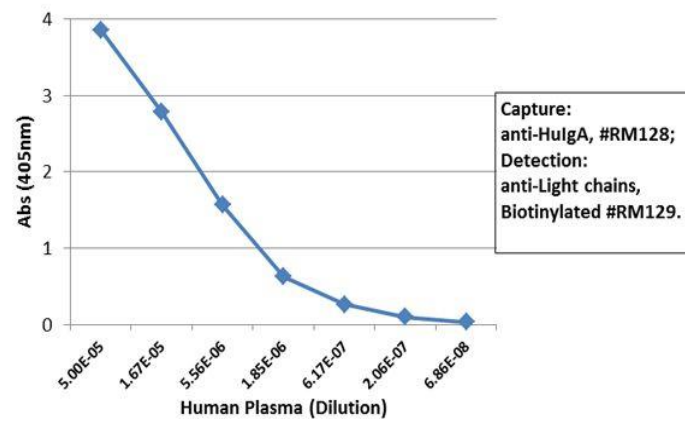
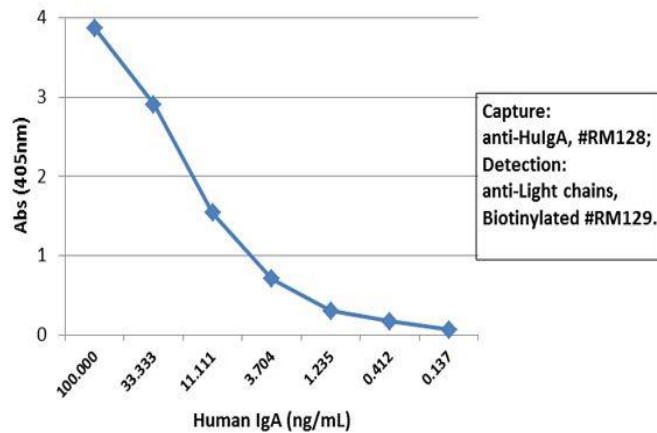


Anti-Human IgA ($\alpha 1$ & $\alpha 2$) Rabbit Monoclonal Antibody

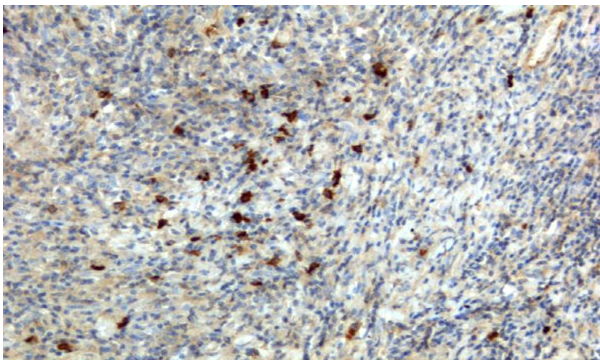
CATALOG NO.:	A1796-50 50 μg.
BACKGROUND DESCRIPTION:	Rabbit monoclonal to Human IgA ($\alpha 1$ & $\alpha 2$)
ANTIBODY TYPE:	Monoclonal
CLONE:	RM128
CONCENTRATION:	1.0 mg/ml
HOST/ISOTYPE:	Rabbit / Rabbit IgG.
IMMUNOGEN:	Human IgA.
SPECIFICITY:	RM128 reacts to human IgA, including both IgA1 and IgA2. No cross reactivity with human IgG, IgM, IgD, or IgE.
PURIFICATION:	Protein A affinity purified from an animal origin-free culture supernatant.
FORM:	Liquid.
FORMULATION:	50% Glycerol/PBS with 1% BSA and 0.09% sodium azide
SPECIES REACTIVITY:	Human.
STORAGE CONDITIONS:	Store at -20°C. Avoid repeated freeze / thaw cycles.
APPLICATIONS AND USAGE:	Immunocytochemistry (ICC): 0.5 μ g/ml-2 μ g/ml. ELISA: 50 ng/well – 200 ng/well (for Capture). 0.05 μ g/mL – 0.2 μ g/mL (for Detection). Immunohistochemistry (IHC): 0.1 μ g/ml-1 μ g/ml.



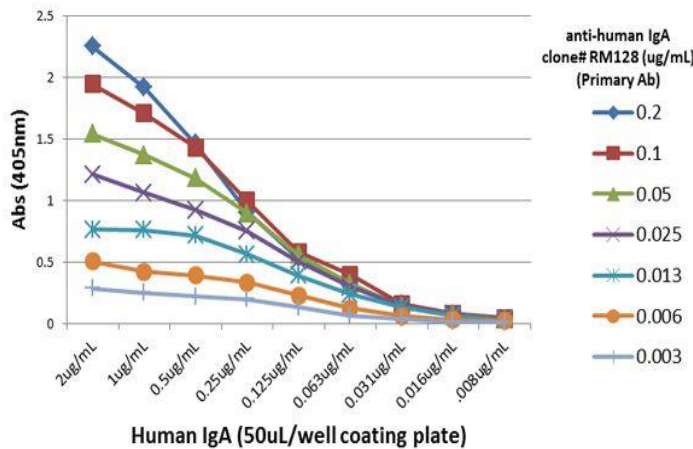
ELISA of human immunoglobulins shows RM128 reacts to both Human IgA1 & IgA2. No cross reactivity with Human IgG, IgM, IgD, or IgE. The plate was coated with 50 ng/well of different immunoglobulins. 200 ng/mL, 50 ng/mL, or 10 ng/mL of RM128 was used as the primary antibody. An alkaline phosphatase conjugated anti-rabbit IgG as the secondary antibody.



Sandwich ELISA using RM128 as the capture antibody (100ng/well), and detection antibody, followed by an alkaline phosphatase conjugated Biotinylated anti-human light chains (κ+λ) antibody RM129 as the Streptavidin.



Immunohistochemistry of Human Lymphoid Tissue using anti-Human IgA antibody RM128.



A titer ELISA using RM128. The plate was coated with different amounts of human IgA. A serial dilution of RM128 was used as the primary antibody. An alkaline phosphatase conjugated anti-rabbit IgG as the secondary antibody.

RELATED PRODUCTS:

- Cardiolipin IgG, IgA, IgM ELISA Kit (Cat# E4658).
- Anti-Mouse IgG Rabbit Monoclonal Antibody (Cat# A1781).
- QuickDetect™ IgA (Human) ELISA Kit (Cat# E4467).
- Anti-Human IgM Rabbit Monoclonal Antibody (Cat# A1795).
- Anti-Mouse IgA Rabbit Monoclonal Antibody (Cat# A1787).
- EBV-VCA IgA ELISA Kit (Cat# E4687).
- Anti-Mouse IgM Rabbit Monoclonal Antibody (Cat# A1788).

FOR RESEARCH USE ONLY! Not to be used on humans.

