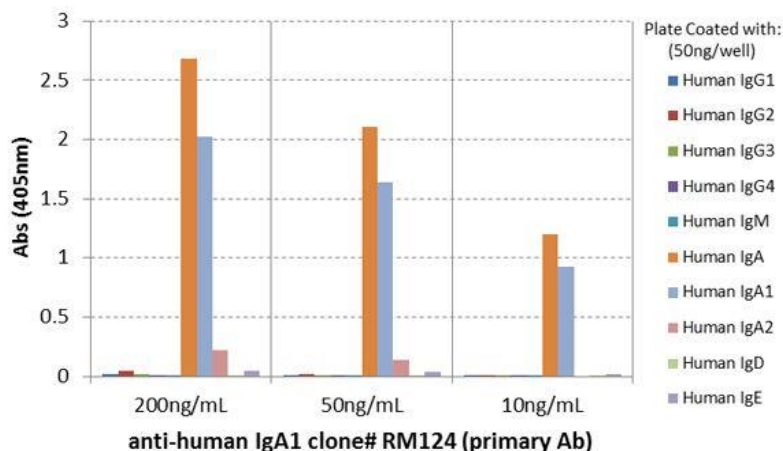


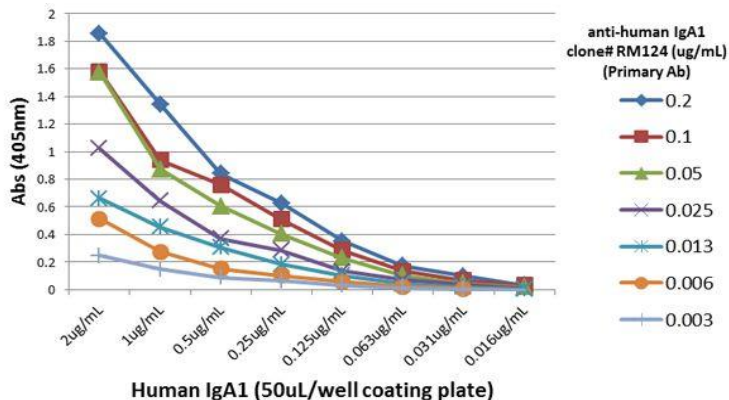
# Anti-Human IgA1, Rabbit Monoclonal Antibody

<b>CATALOG NO.:</b>	<b>A1797-50 50 µg.</b>
<b>BACKGROUND DESCRIPTION:</b>	Rabbit monoclonal to Human IgA1.
<b>ANTIBODY TYPE:</b>	Monoclonal
<b>CLONE:</b>	RM124
<b>CONCENTRATION:</b>	1.0 mg/ml
<b>HOST/ISOTYPE:</b>	Rabbit / Rabbit IgG.
<b>IMMUNOGEN:</b>	Human IgA.
<b>SPECIFICITY:</b>	RM124 reacts to human IgA1, and very slightly cross reacts with IgA2. No cross reactivity with human IgG, IgM, IgD, or IgE.
<b>PURIFICATION:</b>	Protein A affinity purified from an animal origin-free culture supernatant.
<b>FORM:</b>	Liquid.
<b>FORMULATION:</b>	50% Glycerol/PBS with 1% BSA and 0.09% sodium azide
<b>SPECIES REACTIVITY:</b>	Human.
<b>STORAGE CONDITIONS:</b>	Store at -20°C. Avoid repeated freeze / thaw cycles.
<b>APPLICATIONS AND USAGE:</b>	ELISA: 50 ng/well – 200 ng/well (for Capture). 0.05 µg/ml – 0.2 µg/ml (for Detection). Immunohistochemistry (IHC): 0.1 µg/ml-1 µg/ml. Immunocytochemistry (ICC): 0.5 µg/ml-2 µg/ml.

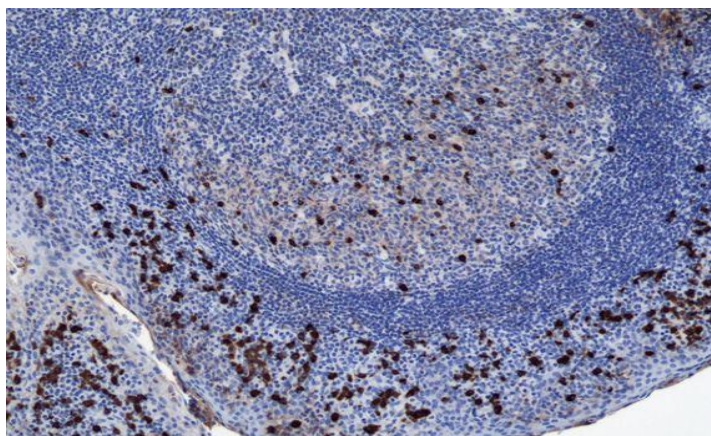


ELISA of human immunoglobulins shows RM124 reacts only to Human IgA. Very slightly cross reacts with IgA2. No cross reactivity with Human IgG, IgM, IgD, or IgE. The plate was coated with 50 ng/well of different immunoglobulins. 200 ng/mL, 50 ng/mL, or 10 ng/mL of RM124 was used as the primary antibody. An alkaline phosphatase conjugated anti-rabbit IgG as the secondary antibody.

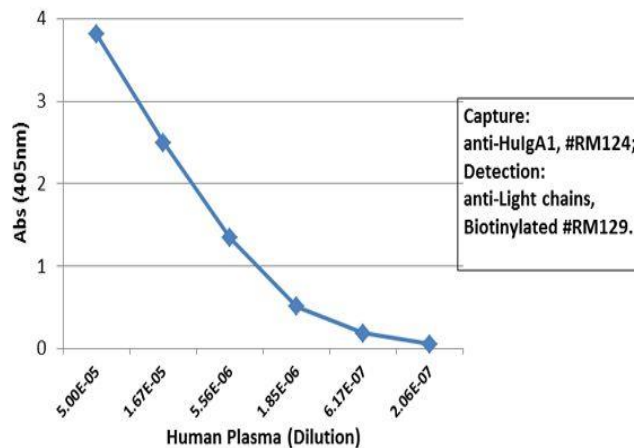
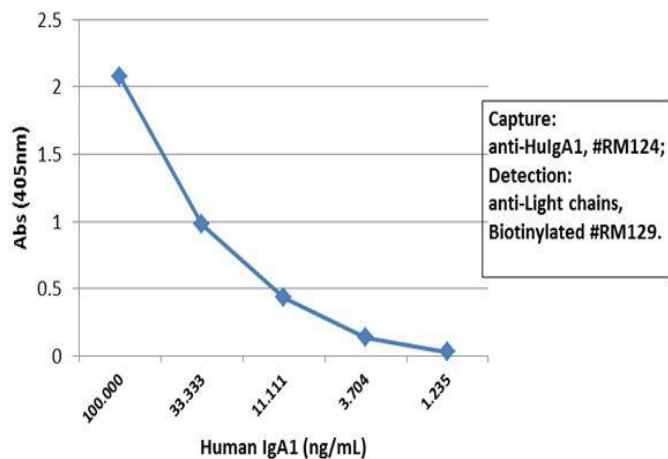
06/19



A titer ELISA using RM124. The plate was coated with different amounts of human IgA1. A serial dilution of RM124 was used as the primary antibody. An alkaline phosphatase conjugated anti-rabbit IgG as the secondary antibody.



Immunohistochemistry of Human Tonsil Tissue using Anti-Human IgA1 antibody RM124.



Sandwich ELISA using RM124 as the capture antibody (100ng/well), and Biotinylated anti-human light chains ( $\kappa + \lambda$ ) antibody RM129 as the detection antibody, followed by an alkaline phosphatase conjugated streptavidin.

**RELATED PRODUCTS:**

- Anti-Mouse IgG Rabbit Monoclonal Antibody (Cat# A1781).
- Helicobacter pylori IgA ELISA Kit (Cat# E4684).
- Anti-Mouse IgM Rabbit Monoclonal Antibody (Cat# A1788).
- EBV-VCA IgA ELISA Kit (Cat# E4687).
- Cardioplin IgG, IgA, IgM ELISA Kit (Cat# E4658).
- Anti-Human IgM Rabbit Monoclonal Antibody (Cat# A1795).
- Anti-Mouse IgA Rabbit Monoclonal Antibody (Cat# A1787).

FOR RESEARCH USE ONLY | Not to be used on humans

Gentaur Europe BVBA Voortstraat 49, 1910 Kampenhout BELGIUM  
Tel 0032 16 58 90 45 [info@gentaur.com](mailto:info@gentaur.com)

