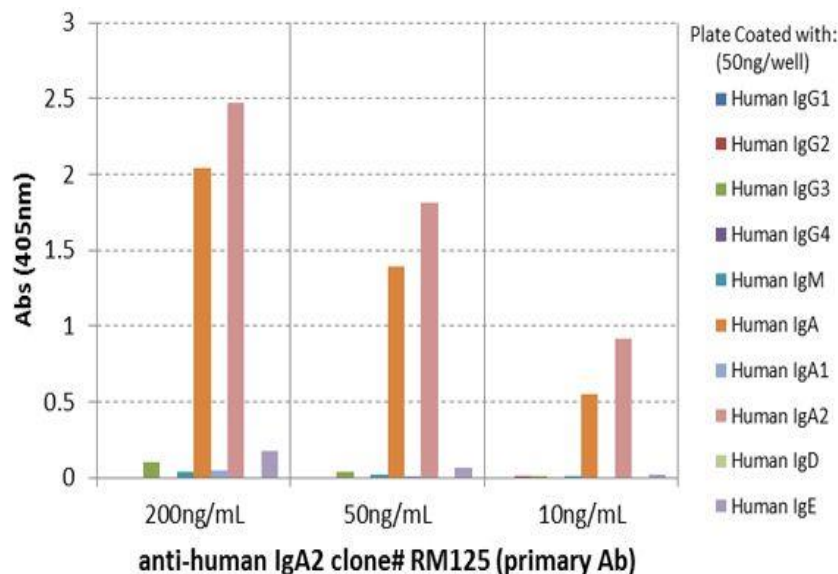


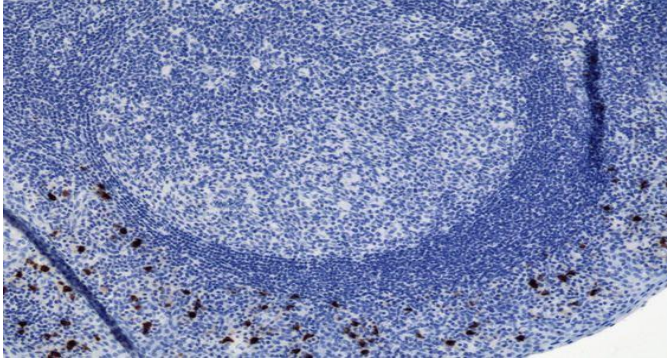
Anti-Human IgA2, Rabbit Monoclonal Antibody

CATALOG NO.: A1798-50 50 µg.

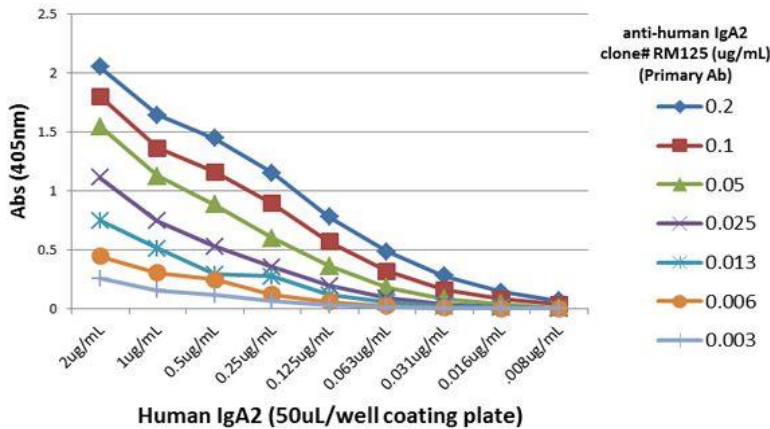
BACKGROUND DESCRIPTION:	Rabbit monoclonal to Human IgA2.
ANTIBODY TYPE:	Monoclonal
CLONE:	RM125
CONCENTRATION:	1.0 mg/ml
HOST/ISOTYPE:	Rabbit / Rabbit IgG.
IMMUNOGEN:	Human IgA2.
SPECIFICITY:	RM125 reacts to human IgA2. No cross reactivity with human IgA1, IgG, IgM, IgD, or IgE.
PURIFICATION:	Protein A affinity purified from an animal origin-free culture supernatant.
FORM:	Liquid.
FORMULATION:	50% Glycerol/PBS with 1% BSA and 0.09% sodium azide
SPECIES REACTIVITY:	Human.
STORAGE CONDITIONS:	Store at -20°C. Avoid repeated freeze / thaw cycles.
APPLICATIONS AND USAGE:	Immunocytochemistry (ICC): 0.5 µg/ml-2 µg/ml. ELISA: 50 ng/well – 200 ng/well (for Capture). 0.05 µg/mL – 0.2 µg/mL (for Detection). Immunohistochemistry (IHC): 0.1 µg/ml-1 µg/ml.



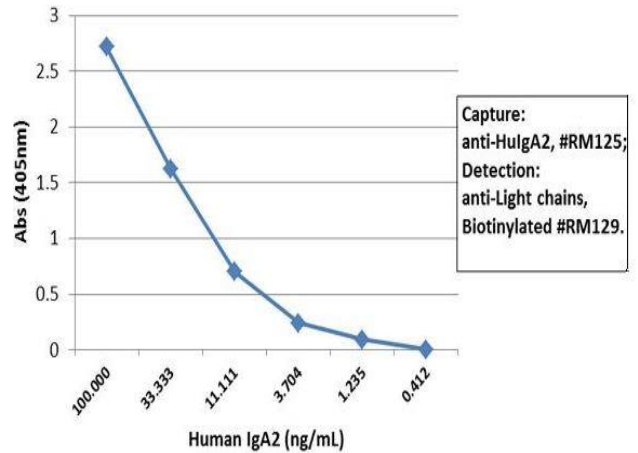
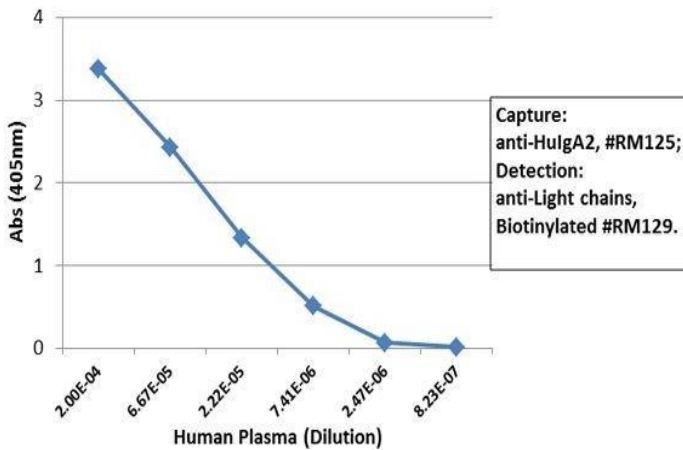
ELISA of human immunoglobulins shows RM125 reacts only to Human IgA2. No cross reactivity with Human IgA1, IgG, IgM, IgD, or IgE. The plate was coated with 50 ng/well of different immunoglobulins. 200 ng/mL, 50 ng/mL, or 10 ng/mL of RM125 was used as the primary antibody. An alkaline phosphatase conjugated anti-rabbit IgG as the secondary antibody.



Immunohistochemistry of Human Tonsil Tissue using Anti-Human IgA2 antibody RM125.



A titer ELISA using RM125. The plate was coated with different amounts of human IgA2. A serial dilution of RM125 was used as the primary antibody. An alkaline phosphatase conjugated anti-rabbit IgG as the secondary antibody.



Sandwich ELISA using RM125 as the capture antibody (100ng/well), and Biotinylated anti-human light chains (κ + λ) antibody RM129 as the detection antibody, followed by an alkaline phosphatase conjugated streptavidin.

RELATED PRODUCTS:

- Anti-Human IgM Rabbit Monoclonal Antibody (Cat# A1795).
- Anti-Mouse IgG Rabbit Monoclonal Antibody (Cat# A1781).
- Anti-Human IgA Rabbit Monoclonal Antibody (Cat# A1796).
- Anti-Human IgA1, Rabbit Monoclonal Antibody (Cat# A1797).
- Anti-Mouse IgM Rabbit Monoclonal Antibody (Cat# A1788).
- Anti-Mouse IgA Rabbit Monoclonal Antibody (Cat# A1787).

FOR RESEARCH USE ONLY. Not to be used on humans.

Gentaur Europe BVBA Voortstraat 49, 1910 Kampenhout BELGIUM
Tel 0032 16 58 90 45 info@gentaur.com

