

# Anti-Human IgD, Rabbit Monoclonal Antibody

**CATALOG NO.:** A1799-50 50 µg.

**BACKGROUND DESCRIPTION:** Rabbit monoclonal to Human IgD

**ANTIBODY TYPE:** Monoclonal

**CLONE:** RM123

**CONCENTRATION:** 1.0 mg/ml

**HOST/ISOTYPE:** Rabbit / Rabbit IgG.

**IMMUNOGEN:** Human IgD.

**SPECIFICITY:** RM123 reacts to human IgD. No cross reactivity with human IgG, IgM, IgE, or IgA.

**PURIFICATION:** Protein A affinity purified from an animal origin-free culture supernatant.

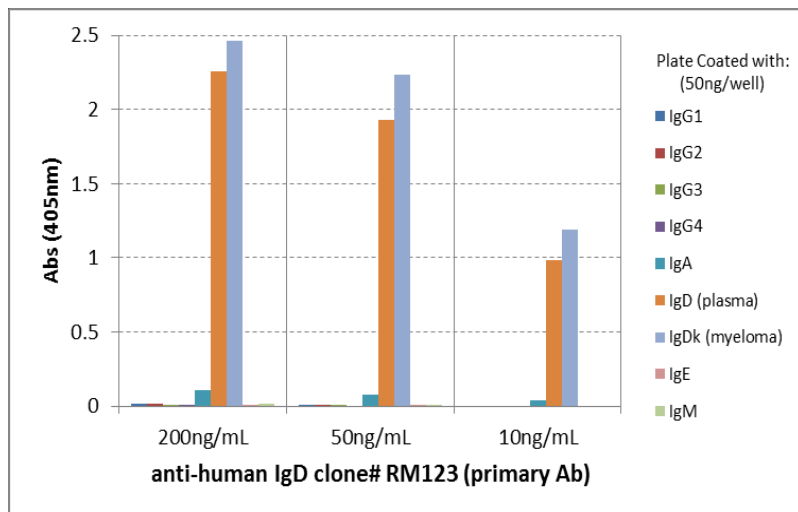
**FORM:** Liquid.

**FORMULATION:** 50% Glycerol/PBS with 1% BSA and 0.09% sodium azide

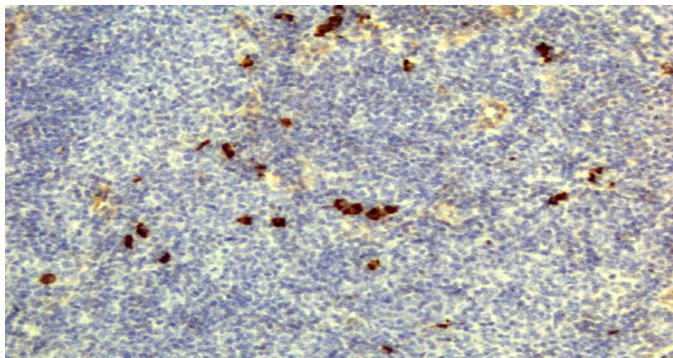
**SPECIES REACTIVITY:** Human.

**STORAGE CONDITIONS:** Store at -20°C. Avoid repeated freeze / thaw cycles.

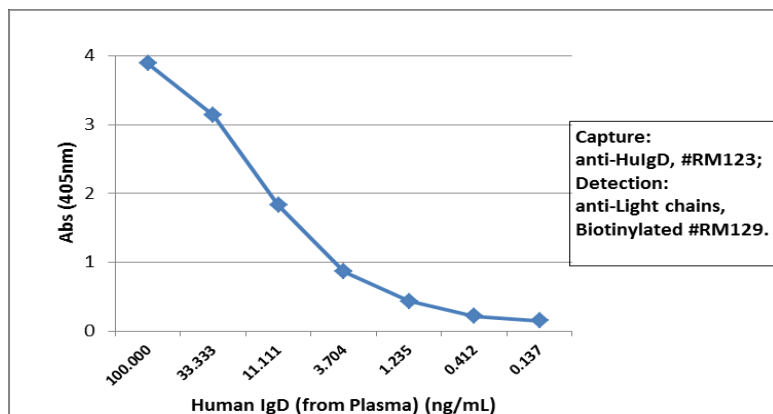
**APPLICATIONS AND USAGE:** 0.01 µg/mL – 0.1 µg/mL (for Detection).  
 ELISA: 25 ng/well – 200 ng/well (for Capture).  
 Immunohistochemistry (IHC): 0.5 µg/ml-2 µg/ml.  
 Immunocytochemistry (ICC): 0.5 µg/ml-2 µg/ml.



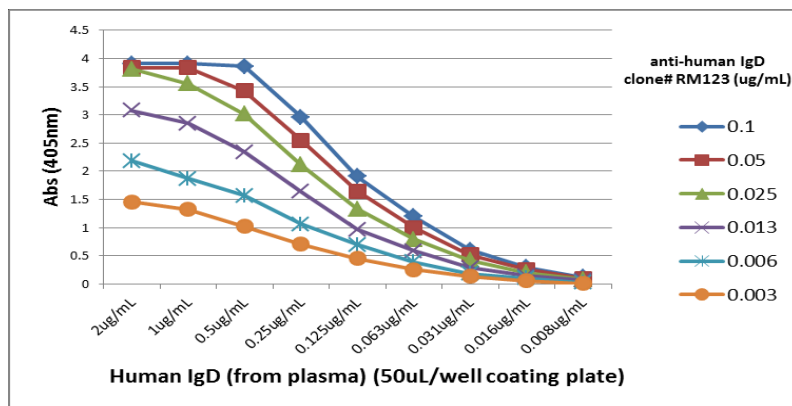
ELISA of human immunoglobulins shows RM123 reacts to IgD from human plasma and IgDk from human myeloma. No cross reactivity with human IgG, IgM, IgA, or IgE. The plate was coated with 50 ng/well of different immunoglobulins. 200 ng/mL, 50ng/mL, or 10 ng/mL of RM123 was used as the primary antibody. An alkaline phosphatase conjugated anti-rabbit IgG as the secondary antibody.



Immunohistochemistry of Human Lymphoid Tissue using Anti-Human IgD antibody RM123.



Sandwich ELISA using RM123 as the capture antibody (100ng/well), and Biotinylated anti-human light chains ( $\kappa + \lambda$ ) antibody RM129 as the detection antibody, followed by an alkaline phosphatase conjugated streptavidin.



A titer ELISA using RM123. The plate was coated with different amounts of human IgD (from plasma). A serial dilution of RM123 was used as the primary antibody. An alkaline phosphatase conjugated anti-rabbit IgG as the secondary antibody.

**RELATED PRODUCTS:**

- Anti-Mouse IgG Rabbit Monoclonal Antibody (Cat# A1781).
- Anti-Human IgM Rabbit Monoclonal Antibody (Cat# A1795).
- Anti-Mouse IgM Rabbit Monoclonal Antibody (Cat# A1788).
- Anti-Human IgA Rabbit Monoclonal Antibody (Cat# A1796).
- Anti-Mouse IgA Rabbit Monoclonal Antibody (Cat# A1787).
- Anti-Human IgA1, Rabbit Monoclonal Antibody (Cat# A1797).

**FOR RESEARCH USE ONLY! Not to be used on humans.**

