

# Anti-Human IgG1, Rabbit Monoclonal Antibody

**CATALOG NO.:** A1801-50 50 µg.

**BACKGROUND DESCRIPTION:** Rabbit monoclonal to Human IgG1.

**ANTIBODY TYPE:** Monoclonal

**CLONE:** RM117

**CONCENTRATION:** 1.0 mg/ml

**HOST/ISOTYPE:** Rabbit / Rabbit IgG.

**IMMUNOGEN:** Peptide corresponding to the hinge region of Human IgG1.

**SPECIFICITY:** RM117 reacts to the heavy chain of human IgG1. RM117 does not cross react to any other IgG subclasses (IgG2, IgG3, or IgG4), and shows no cross reactivity to IgM, IgA, IgD, IgE. RM117 does not react to monkey (Cyno or Rhesus) IgG, mouse IgG, rat IgG, or goat IgG.

**PURIFICATION:** Protein A affinity purified from an animal origin-free culture supernatant.

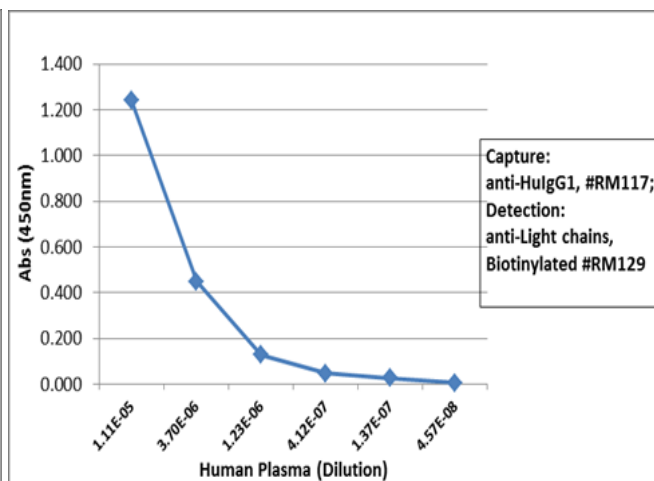
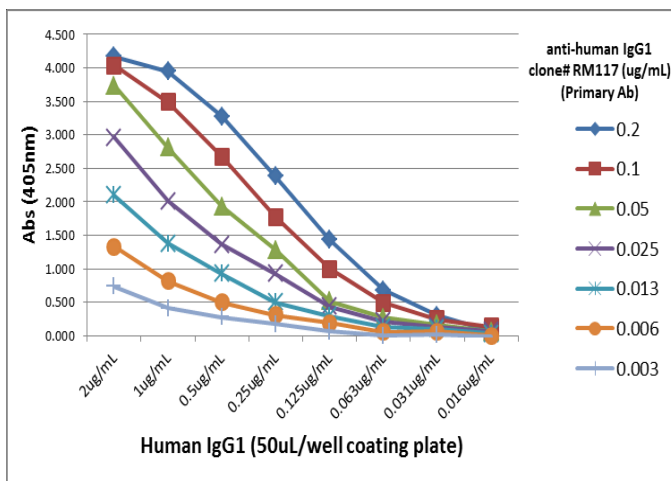
**FORM:** Liquid.

**FORMULATION:** 50% Glycerol/PBS with 1% BSA and 0.09% sodium azide

**SPECIES REACTIVITY:** Human.

**STORAGE CONDITIONS:** Store at -20°C. Avoid repeated freeze / thaw cycles.

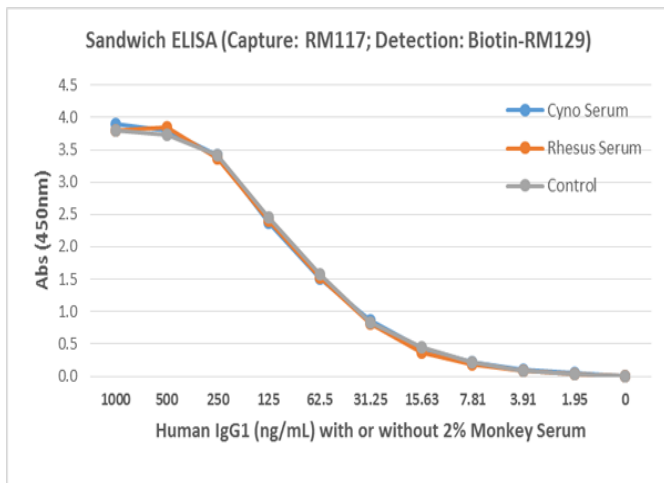
**APPLICATIONS AND USAGE:** Immunohistochemistry (IHC): 0.5 µg/ml-2 µg/ml.  
 ELISA: 50 ng/well – 200 ng/well (for Capture).  
 0.05 µg/mL – 0.2 µg/mL (for Detection).  
 Immunocytochemistry (ICC): 0.5 µg/ml-2 µg/ml.



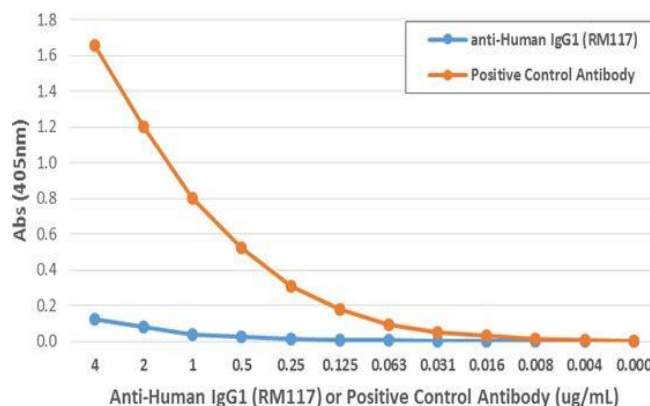
A titer ELISA using RM117. The plate was coated with different amounts of human IgG1. A serial dilution of RM117 was used as the

Sandwich ELISA using RM117 as the capture antibody, and biotinylated anti-human light chains (κ or λ) antibody RM129 as the



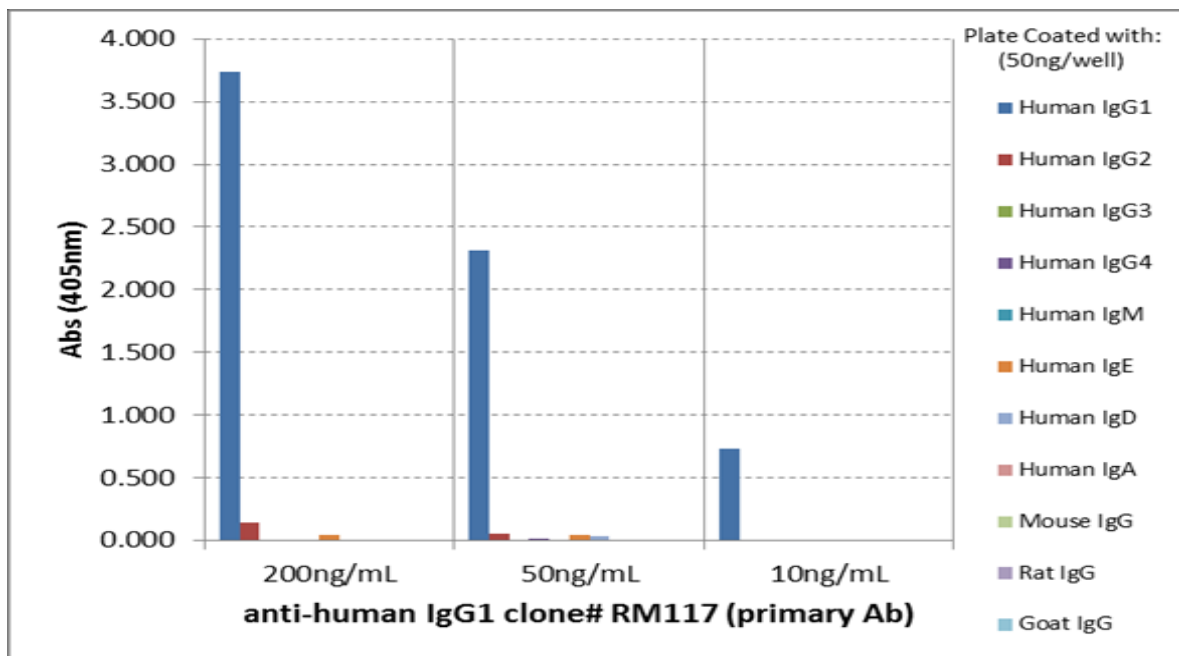


ELISA of Rhesus Monkey IgG using Anti-Human IgG1, Rabbit MAb



Sandwich ELISA using RM122 as the capture antibody (25ng/well), and Biotinylated anti-human light chains ( $\kappa + \lambda$ ) antibody RM129 as the detection antibody, followed by an alkaline phosphatase conjugated streptavidin.

ELISA showing RM117 does not react to monkey IgG. The plate was coated with Rhesus monkey IgG. A serial dilution of RM117 and a monkey IgG binding antibody (positive control) was used as the detection antibody.



ELISA showing RM117 reacts only to human IgG1 and not to any other IgG subclasses (IgG2, IgG3 or IgG4), and no cross reactivity to IgM, IgA, IgD, IgE, mouse IgG, rat IgG, or goat IgG.

**RELATED PRODUCTS:**

- Anti-Mouse IgG Rabbit Monoclonal Antibody (Cat# A1781).
- Anti-Mouse IgG2c Rabbit Monoclonal Antibody (Cat# A1789).
- Anti-Mouse IgG1 Rabbit Monoclonal Antibody (Cat# A1782).
- Anti-Mouse IgG2b Rabbit Monoclonal Antibody (Cat# A1785).
- Anti-Human IgG2 Rabbit Monoclonal Antibody (Cat# A1802).
- Anti-Mouse IgG2a kappa Rabbit Monoclonal Antibody (Cat# A1783).
- Anti-Mouse IgG2a Rabbit Monoclonal Antibody (Cat# A1784).
- Anti-Mouse IgG3 Rabbit Monoclonal Antibody (Cat# A1786).

**FOR RESEARCH USE ONLY! Not to be used on humans.**

