

Anti-Human IgG4, Rabbit Monoclonal Antibody

CATALOG NO.: A1808-50 50 µg.

BACKGROUND DESCRIPTION: Rabbit monoclonal to Human IgG4.

ANTIBODY TYPE: Monoclonal

CLONE: RM120

CONCENTRATION: 1.0 mg/ml

HOST/ISOTYPE: Rabbit / Rabbit IgG.

IMMUNOGEN: Peptide corresponding to the hinge region of Human IgG4

SPECIFICITY: RM120 reacts to the heavy chain of human IgG4, RM120 does not cross react to any other IgG subclasses (IgG1, IgG2, or IgG3), and shows no cross reactivity to IgM, IgA, IgD, IgE. RM120 does not react to monkey (Cyno or Rhesus) IgG, mouse IgG, rat IgG, or goat IgG.

PURIFICATION: Protein A affinity purified from an animal origin-free culture supernatant.

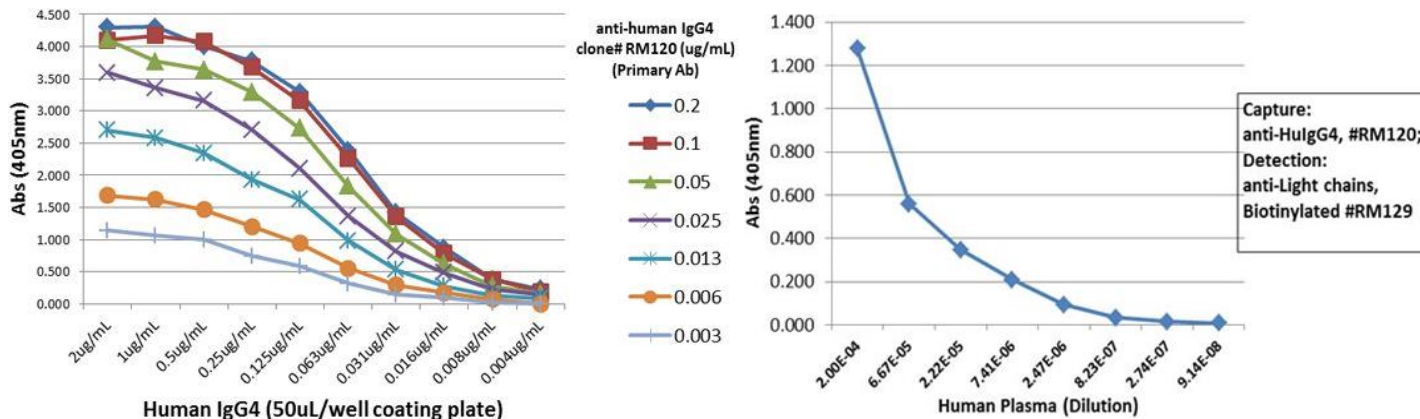
FORM: Liquid.

FORMULATION: 50% Glycerol/PBS with 1% BSA and 0.09% sodium azide

SPECIES REACTIVITY: Human.

STORAGE CONDITIONS: Store at -20°C. Avoid repeated freeze / thaw cycles.

APPLICATIONS AND USAGE:
 Western Blot (WB): 0.5 µg/mL – 2 µg/ml.
 ELISA: 50 ng/well – 200 ng/well (for Capture).
 Immunohistochemistry (IHC): 1 µg/mL-10 µg/ml.
 0.05 µg/mL – 0.2 µg/mL (for Detection).
 Immunocytochemistry (ICC): 1 µg/mL-10 µg/ml.

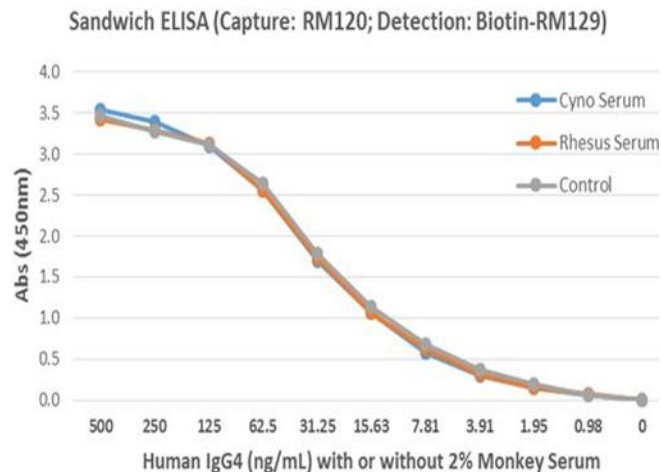
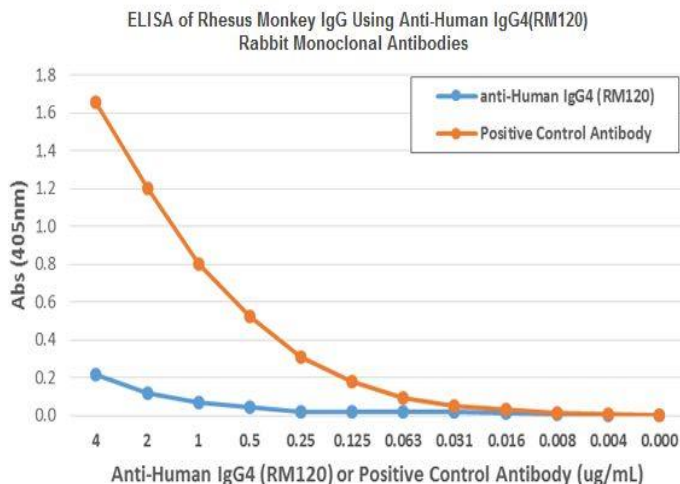


A titer ELISA using RM120. The plate was coated with different amounts of human IgG4. A serial dilution of RM120 was used as the primary antibody, followed by an alkaline phosphatase conjugated anti-rabbit IgG as the secondary antibody.

Sandwich ELISA using RM120 as the capture antibody, and biotinylated anti-human light chains (κ+ λ) antibody RM129 as the detection antibody, followed by an AP conjugated streptavidin.

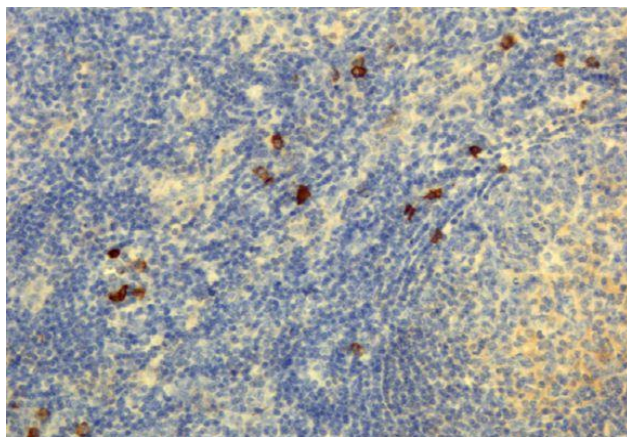


06/19

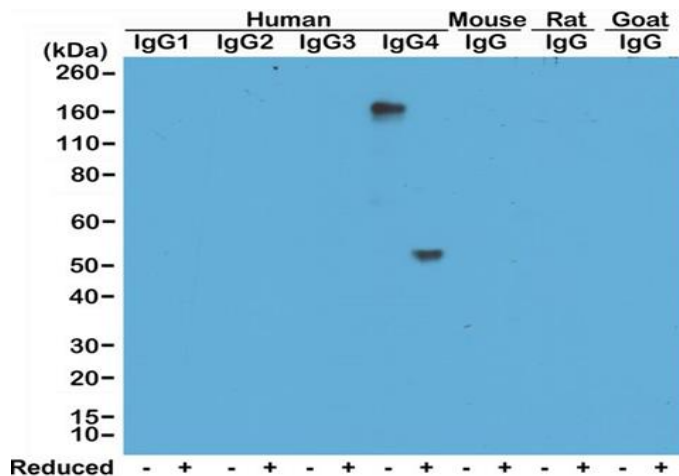


ELISA showing RM120 does not react to monkey IgG. The plate was coated with Rhesus monkey IgG. A serial dilution of RM120 and a monkey IgG binding antibody (positive control) was used as the detection antibody.

Detection of human IgG4 in monkey serum. Sandwich ELISA using RM120 as the capture antibody, and biotinylated anti-human light chains ($\kappa + \lambda$) antibody RM129 as the detection antibody, followed by a HRP conjugated streptavidin.



Immunohistochemical staining of formalin fixed and paraffin embedded human lymphoid tissue section using anti-human IgG4 rabbit monoclonal antibody (Clone RM120).



Western Blot of human, mouse, rat, and goat IgG shows RM120 reacts to human IgG4, in both whole molecule (~150kDa, non-reduced) and heavy chain (~50kDa, reduced) forms. No cross reactivity with other isotypes of human IgG, or mouse, rat, or goat IgG.

RELATED PRODUCTS:

- Anti-Human IgG1, Rabbit Monoclonal Antibody (Cat# A1801).
- Anti-Mouse IgG3 Rabbit Monoclonal Antibody (Cat# A1786).
- Anti-Mouse IgG1 Rabbit Monoclonal Antibody (Cat# A1782).
- Anti-Mouse IgG2a kappa Rabbit Monoclonal Antibody (Cat# A1783).
- Anti-Mouse IgG Rabbit Monoclonal Antibody (Cat# A1781).
- Anti-Mouse IgG2b Rabbit Monoclonal Antibody (Cat# A1785).
- Anti-Mouse IgG2a Rabbit Monoclonal Antibody (Cat# A1784).

FOR RESEARCH USE ONLY! Not to be used on humans.

