

# Anti-Phosphothreonine, Rabbit Monoclonal Antibody

CATALOG NO.: A1810-50 50 µg.

**BACKGROUND DESCRIPTION:** Rabbit monoclonal to Phosphothreonine.

**ANTIBODY TYPE:** Monoclonal

**CLONE:** RM102

**CONCENTRATION:** 1 mg/ml

**HOST/ISOTYPE:** Rabbit / Rabbit IgG.

**IMMUNOGEN:** Mixture of phosphothreonine-BSA conjugate and a phosphothreonine containing peptide.

**MOLECULAR WEIGHT:** RM102 reacts with threonine-phosphorylated proteins. No cross reactivity with nonphosphorylated threonine, phosphoserine, and phosphotyrosine. It shows slight cross-reactivity with a few phospho-serine-containing peptides.

**PURIFICATION:** Protein A affinity purified from an animal origin-free culture supernatant.

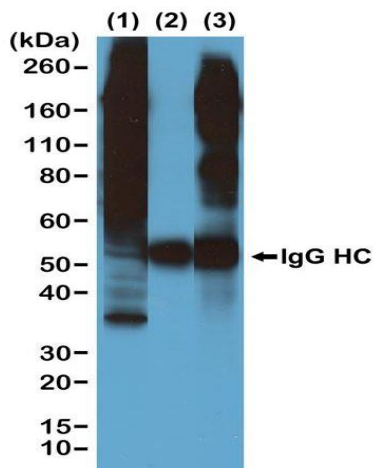
**FORM:** Liquid.

**FORMULATION:** 50% Glycerol/PBS with 1% BSA and 0.09% sodium azide

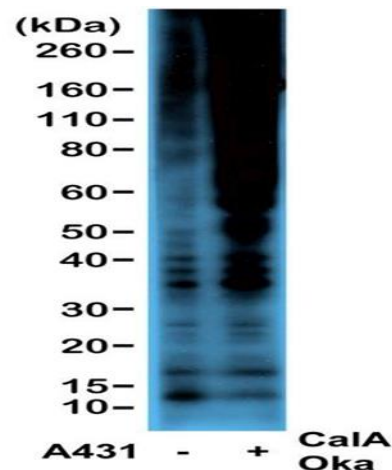
**SPECIES REACTIVITY:** All species.

**STORAGE CONDITIONS:** Store at -20°C. Avoid repeated freeze / thaw cycles.

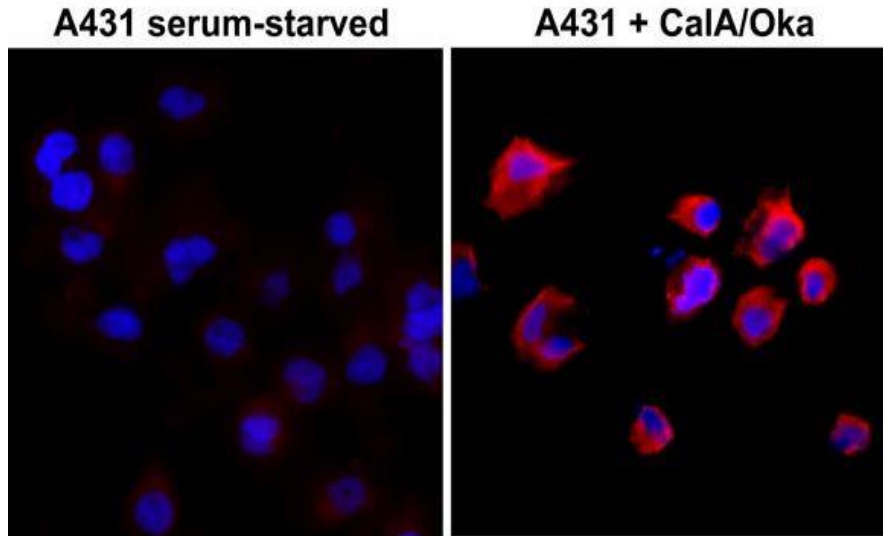
**APPLICATIONS AND USAGE:** Chromatin IP (ChIP): 1:100-1:500 dilution.  
 Western Blot (WB): 1:500 -1:2000 dilution.  
 Immunoprecipitation (IP): 1:100-1:500 dilution.  
 Immunocytochemistry (ICC): 1:100-1:500 dilution.  
 Immunohistochemistry (IHC): 1:100-1:500 dilution.



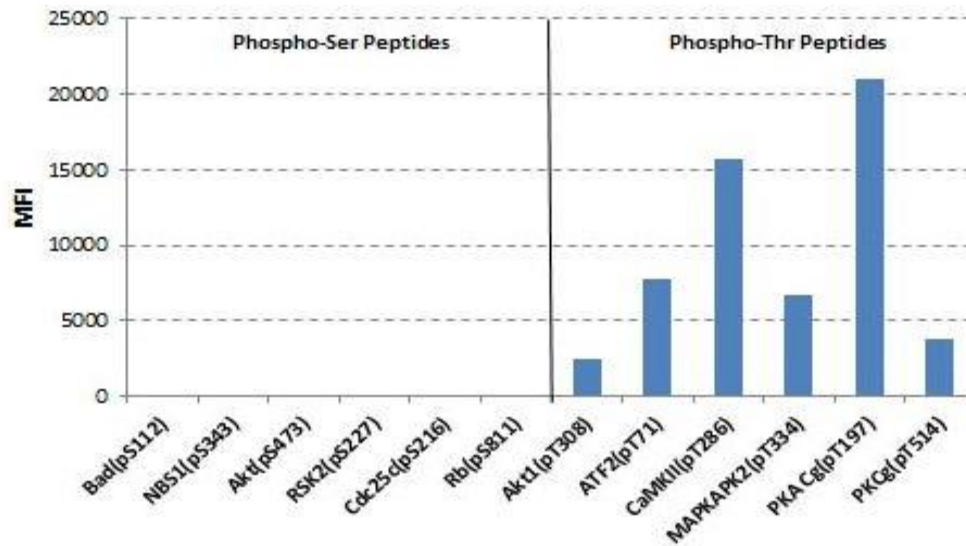
Immunoprecipitation of Calyculin A/Okadaic Acid treated A431 cells by clone RM102 at 1/500 dilution, and then blotted with RM102. (1) Whole lysate control; (2) IP by rabbit IgG control;



Western blot of serum-starved A431 cells non-treated or treated with Calyculin A/Okadaic Acid, using Clone RM102 at 1/2000 dilution.



Immunocytochemistry of serum-starved A431 cells non treated or treated with Calyculin A/ Okadaic Acid, using Clone RM102 at 1/500 dilution (followed by PE conjugated secondary antibody, red) and DAPI (blue).



Rabbit monoclonal antibody clone RM102 recognizes Phosphorylated threonine in peptides with different sequences. It has minimal cross-reactivity with phosphorylated serine.

#### RELATED PRODUCTS:

- Anti-Human IgG2, Rabbit Monoclonal Antibody (Cat# A1802).
- Anti-Human IgG3, Rabbit Monoclonal Antibody (Cat# A1807).
- Anti-Human IgA1, Rabbit Monoclonal Antibody (Cat# A1797).
- Anti-Human IgA2 Rabbit Monoclonal Antibody (Cat# A1798).
- Anti-Human IgG1, Rabbit Monoclonal Antibody (Cat# A1801).
- Anti-Human IgD Rabbit Monoclonal Antibody (Cat# A1799).
- Anti-Human IgG4 Fc, Rabbit Monoclonal Antibody (Cat# A1809).
- Anti-Human IgG4, Rabbit Monoclonal Antibody (Cat# A1808).
- Anti-Human IgE, Rabbit Monoclonal Antibody (Cat# A1800).

**FOR RESEARCH USE ONLY! Not to be used on humans.**