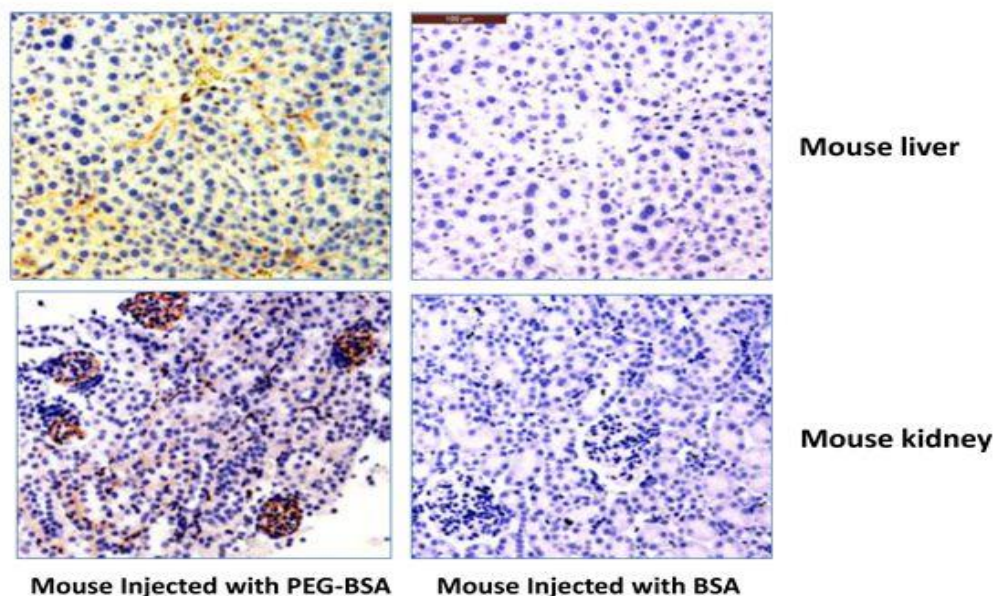
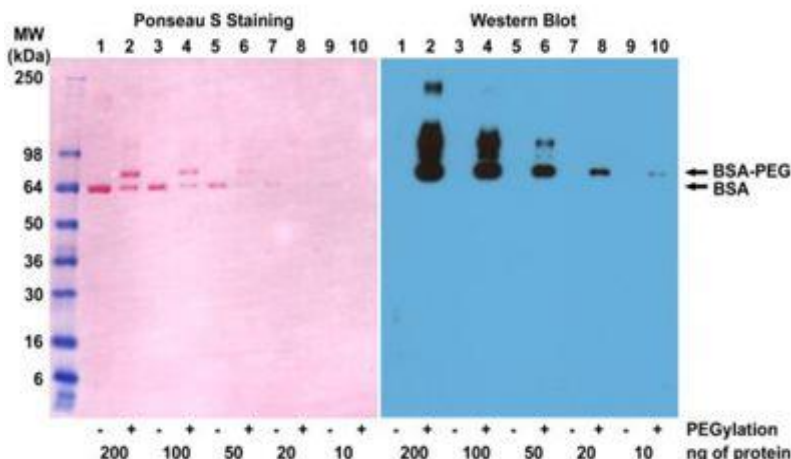


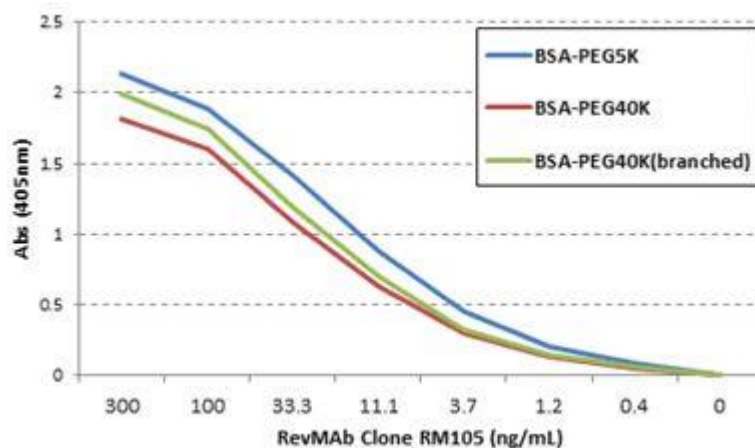
Anti-PEG, Rabbit Monoclonal Antibody

CATALOG NO.:	A1811-50 50 µg.
BACKGROUND DESCRIPTION:	Rabbit monoclonal to Polyethylene Glycol
ANTIBODY TYPE:	Monoclonal
CLONE:	RM105
CONCENTRATION:	1 mg/ml
HOST/ISOTYPE:	Rabbit / Rabbit IgG.
IMMUNOGEN:	KLH-PEG with terminal methoxy group.
SPECIFICITY:	RM105 reacts to the methoxy group of Polyethylene glycol (PEG). It is specific for methoxypolyethylene glycol.
PURIFICATION:	Protein A affinity purified from an animal origin-free culture supernatant.
FORM:	Liquid.
FORMULATION:	50% Glycerol/PBS with 1% BSA and 0.09% sodium azide
SPECIES REACTIVITY:	All species.
STORAGE CONDITIONS:	Store at -20°C. Avoid repeated freeze / thaw cycles.
APPLICATIONS AND USAGE:	Western Blot (WB): 0.05 µg/ml-1 µg/ml. ELISA: 0.01 µg/ml-0.3 µg/ml. Immunohistochemistry (IHC): 0.5 µg/ml-2 µg/ml.





Western blot of BSA and PEGylated BSA (mPEG 5 kDa) using 0.1 $\mu\text{g}/\text{mL}$ of anti-PEG clone RM105.



ELISA of three different PEGylated BSAs using anti-PEG clone RM105, followed by an AP conjugated goat anti-rabbit IgG.

RELATED PRODUCTS:

- Anti-Human IgG4 Fc, Rabbit Monoclonal Antibody (Cat# A1809).
- Anti-Human IgD, Rabbit Monoclonal Antibody (Cat# A1799).
- Anti-Human IgG2, Rabbit Monoclonal Antibody (Cat# A1802).
- Anti-Human IgG3, Rabbit Monoclonal Antibody (Cat# A1807).
- Anti-Human IgG1, Rabbit Monoclonal Antibody (Cat# A1801).
- Anti-Human IgG4, Rabbit Monoclonal Antibody (Cat# A1808).
- Anti-Human IgE, Rabbit Monoclonal Antibody (Cat# A1800).
- Anti-Phosphothreonine, Rabbit Monoclonal Antibody (Cat# A1810).

FOR RESEARCH USE ONLY! Not to be used on humans.