

Anti- α -Tubulin, Rabbit Monoclonal Antibody

CATALOG NO.: A1812-50 50 μ l.

BACKGROUND DESCRIPTION: Rabbit monoclonal to α -Tubulin (alpha-Tubulin).

ANTIBODY TYPE: Monoclonal

CLONE: RM113

HOST/ISOTYPE: Rabbit / Rabbit IgG.

IMMUNOGEN: A peptide corresponding to the C-terminus of α -Tubulin.

SPECIFICITY: RM113 reacts to α -Tubulin, including both Tubulin alpha-1A chain and Tubulin alpha-1B chain.

PURIFICATION: Protein A affinity purified from an animal origin-free culture supernatant.

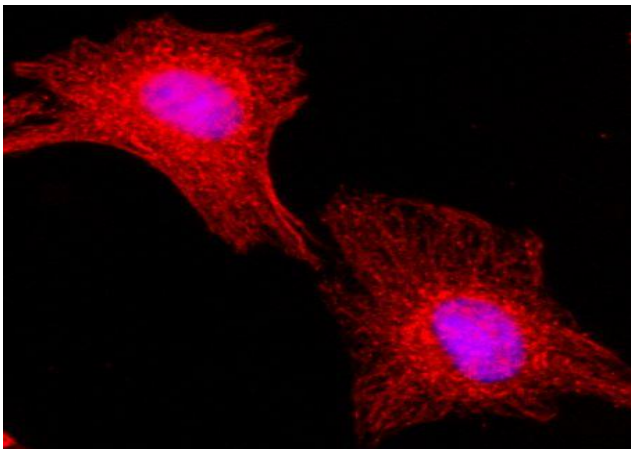
FORM: Liquid.

FORMULATION: 50% Glycerol/PBS with 1% BSA and 0.09% sodium azide

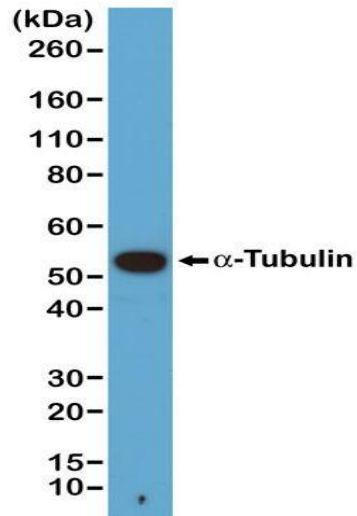
SPECIES REACTIVITY: All species.

STORAGE CONDITIONS: Store at -20°C. Avoid repeated freeze / thaw cycles.

APPLICATIONS AND USAGE: Immunoprecipitation (IP): 1:200 dilution.
Immunocytochemistry (ICC): 1:200 dilution.
Western Blot (WB): 1:1000 dilution.
Chromatin IP (ChIP): 1:200 dilution.
Immunohistochemistry (IHC): 1:200 dilution.



Immunocytochemical staining of HeLa cells, using Anti- α -Tubulin Clone RM113 at 1/200 dilution (red). Nuclei have been labeled with DAPI (blue).



Western blot of A431 cells, using Anti- α -Tubulin Clone RM113 at 1/1000 dilution, showed a band of α -Tubulin at the predicted MW (~50 kDa).

RELATED PRODUCTS:

- Anti-Human IgG2, Rabbit Monoclonal Antibody (Cat# A1802).
- Anti-Human IgG4 Fc, Rabbit Monoclonal Antibody (Cat# A1809).
- Anti-Phosphothreonine, Rabbit Monoclonal Antibody (Cat# A1810).
- Anti-Human IgG1, Rabbit Monoclonal Antibody (Cat# A1801).
- Anti-PEG, Rabbit Monoclonal Antibody (Cat# A1811).
- Anti-Human IgG3, Rabbit Monoclonal Antibody (Cat# A1807).
- Anti-Human IgE, Rabbit Monoclonal Antibody (Cat# A1800).
- Anti-Human IgG4, Rabbit Monoclonal Antibody (Cat# A1808).

FOR RESEARCH USE ONLY! Not to be used on humans.