

Anti- β -Actin, Rabbit Monoclonal Antibody

CATALOG NO.: A1813-50 50 μ l.

BACKGROUND DESCRIPTION: Rabbit monoclonal to β -Actin (beta-actin).

ANTIBODY TYPE: Monoclonal

CLONE: RM112

HOST/ISOTYPE: Rabbit / Rabbit IgG.

IMMUNOGEN: A peptide corresponding to the N-terminus of β -actin.

SPECIFICITY: RM112 reacts to β -Actin (Actin, cytoplasmic 1). No cross reactivity with other isoforms of Actin.

PURIFICATION: Protein A affinity purified from an animal origin-free culture supernatant.

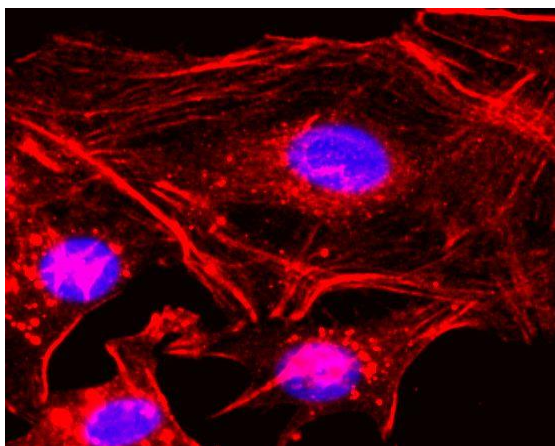
FORM: Liquid.

FORMULATION: 50% Glycerol/PBS with 1% BSA and 0.09% sodium azide

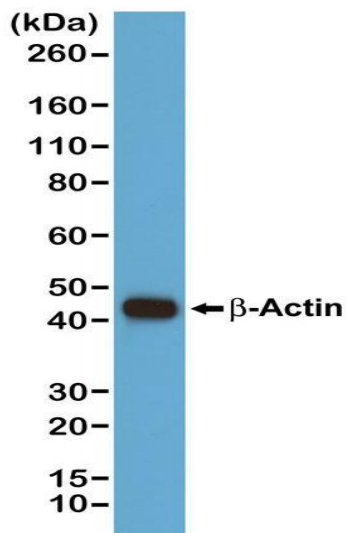
SPECIES REACTIVITY: All species.

STORAGE CONDITIONS: Store at -20°C . Avoid repeated freeze / thaw cycles.

APPLICATIONS AND USAGE: Chromatin IP (ChIP): 1:200 dilution.
Immunohistochemistry (IHC): 1:200 dilution.
Western Blot (WB): 1:1000 dilution.
Immunoprecipitation (IP): 1:200 dilution.
Immunocytochemistry (ICC): 1:200 dilution.



Immunocytochemical staining of HeLa cells, using anti- β -Actin Clone RM112 at 1/200 dilution (red). Nuclei have been labeled with DAPI (blue).



Western blot of A431 cells, using anti- β -Actin Clone RM112 at a 1/1000 dilution, showed a band of β -Actin at the predicted MW (42 kDa).

RELATED PRODUCTS:

- Anti-Human IgG1, Rabbit Monoclonal Antibody (Cat# A1801).
- Anti-Human IgG2, Rabbit Monoclonal Antibody (Cat# A1802).
- Anti-Human IgG4, Rabbit Monoclonal Antibody (Cat# A1808).
- Anti-Human IgG3, Rabbit Monoclonal Antibody (Cat# A1807).
- Anti-Human IgG4 Fc, Rabbit Monoclonal Antibody (Cat# A1809).
- Anti-Phosphothreonine, Rabbit Monoclonal Antibody (Cat# A1810).
- Anti-PEG, Rabbit Monoclonal Antibody (Cat# A1811).
- Anti- α -Tubulin, Rabbit Monoclonal Antibody (Cat# A1812).

FOR RESEARCH USE ONLY! Not to be used on humans.