

# Anti-Androgen Receptor, Rabbit Monoclonal Antibody

**CATALOG NO.:** A1817-50 50 µl.

**BACKGROUND DESCRIPTION:** Rabbit monoclonal to Androgen Receptor (N-term), AR-N Terminal

**ALTERNATE NAMES:** Anti-Androgen Receptor.

**ANTIBODY TYPE:** Monoclonal

**CLONE:** RM254

**HOST/ISOTYPE:** Rabbit / Rabbit IgG.

**IMMUNOGEN:** A peptide corresponding to the N-terminus of Androgen Receptor.

**SPECIFICITY:** RM254 reacts to full length androgen receptor and splice variants.

**PURIFICATION:** Protein A affinity purified from an animal origin-free culture supernatant.

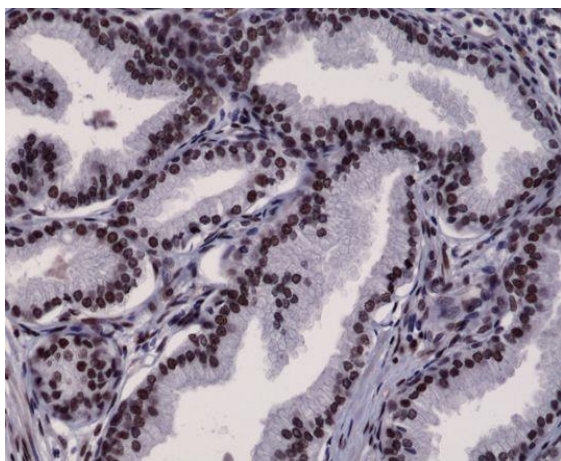
**FORM:** Liquid.

**FORMULATION:** 50% Glycerol/PBS with 1% BSA and 0.09% sodium azide

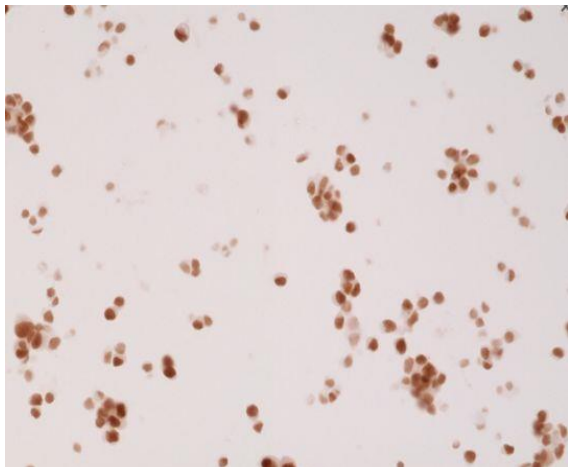
**SPECIES REACTIVITY:** Human.

**STORAGE CONDITIONS:** Store at -20°C. Avoid repeated freeze / thaw cycles.

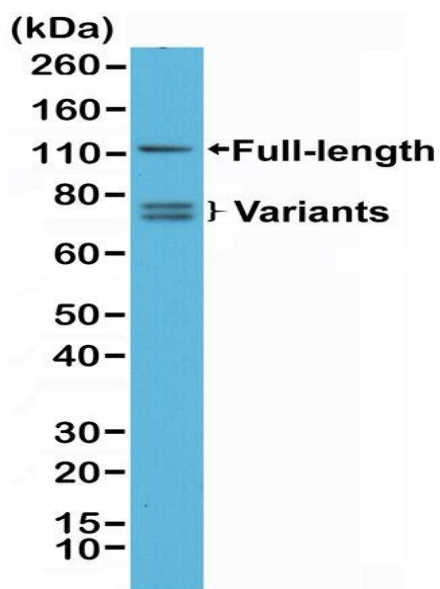
**APPLICATIONS AND USAGE:** Western Blot (WB): 1:100 – 1:1000 dilution.  
Immunohistochemistry (IHC): 1:1000 – 1:2500 dilution.



Immunohistochemical staining of formalin fixed and paraffin embedded human prostate cancer tissue section using anti-Androgen Receptor (N-term) rabbit monoclonal antibody (Clone RM254) at a 1:2500 dilution.



Immunohistochemical staining of formalin fixed and paraffin embedded 22RV1 cells sections using anti- Androgen Receptor (N-term) rabbit monoclonal antibody (Clone RM254) at a 1:2500 dilution.



Western Blot analysis of 22RV1 whole cell lysates, using anti-Androgen Receptor (N-term) rabbit monoclonal antibody (Clone RM254), showed full length androgen receptor and splice variants expressed in 22RV1 cells.

**RELATED PRODUCTS:**

- Anti-Phosphothreonine, Rabbit Monoclonal Antibody (Cat# A1810).
- Anti-PEG, Rabbit Monoclonal Antibody (Cat# A1811).
- Anti- $\alpha$ -Tubulin, Rabbit Monoclonal Antibody (Cat# A1812).
- Anti- $\beta$ -Actin, Rabbit Monoclonal Antibody (Cat# A1813)
- Anti-GAPDH, Rabbit Monoclonal Antibody (Cat# A1814).
- Anti-25-OH Vitamin D3, Rabbit Monoclonal Antibody (Cat# A1815).
- Anti-Estradiol, Rabbit Monoclonal Antibody (Cat# A1816).

**FOR RESEARCH USE ONLY! Not to be used on humans.**