

Anti-N-Cadherin (CDH2), Rabbit Monoclonal Antibody

CATALOG NO.: A1818-50 50 μ l.

BACKGROUND DESCRIPTION: Rabbit monoclonal to N-Cadherin, CADH2, CDH2, and Cadherin-2.

ANTIBODY TYPE: Monoclonal

CLONE: RM259

HOST/ISOTYPE: Rabbit / Rabbit IgG.

IMMUNOGEN: A peptide corresponding to Human N-Cadherin.

SPECIFICITY: RM259 reacts to human N-cadherin. This antibody may also react to mouse or rat N-cadherin, as predicted by immunogen homology.

PURIFICATION: Protein A affinity purified from an animal origin-free culture supernatant.

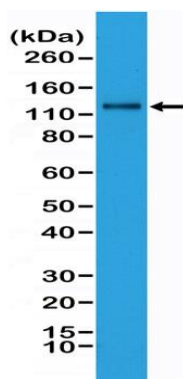
FORM: Liquid.

FORMULATION: 50% Glycerol/PBS with 1% BSA and 0.09% sodium azide

SPECIES REACTIVITY: Human, Mouse or Rat

STORAGE CONDITIONS: Store at -20°C. Avoid repeated freeze / thaw cycles.

APPLICATIONS AND USAGE: Western Blot (WB): 1:1000-1:2000 dilution.



Western Blot analysis of HeLa whole cell lysates, using anti-N-cadherin rabbit monoclonal antibody (Clone RM259), showed N-cadherin expression in HeLa cells.

RELATED PRODUCTS:

- Anti-PEG, Rabbit Monoclonal Antibody (Cat# A1811).
- Anti- α -Tubulin, Rabbit Monoclonal Antibody (Cat# A1812).
- Anti- β -Actin, Rabbit Monoclonal Antibody (Cat# A1813).
- Anti-GAPDH, Rabbit Monoclonal Antibody (Cat# A1814).
- Anti-25-OH Vitamin D3, Rabbit Monoclonal Antibody (Cat# A1815).
- Anti-Estradiol, Rabbit Monoclonal Antibody (Cat# A1816).
- Anti-AR (N-terminal), Rabbit Monoclonal Antibody (Cat# A1817)

FOR RESEARCH USE ONLY! Not to be used on humans.