

# Anti-Paxillin, Rabbit Monoclonal Antibody

**CATALOG NO.:** A1819-50 50 µl.

**BACKGROUND DESCRIPTION:** Rabbit monoclonal to Paxillin.

**ANTIBODY TYPE:** Monoclonal

**CLONE:** RM256

**HOST/ISOTYPE:** Rabbit / Rabbit IgG.

**IMMUNOGEN:** A peptide corresponding to the N-terminus of human Paxillin.

**SPECIFICITY:** RM256 reacts to human Paxillin. This antibody may also react to mouse or rat Paxillin, as predicted by immunogen homology.

**PURIFICATION:** Protein A affinity purified from an animal origin-free culture supernatant.

**FORM:** Liquid.

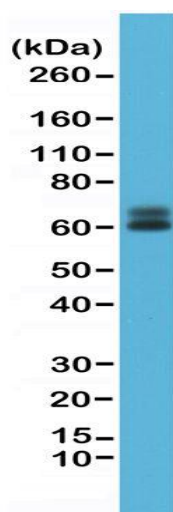
**FORMULATION:** 50% Glycerol/PBS with 1% BSA and 0.09% sodium azide

**SPECIES REACTIVITY:** Human.

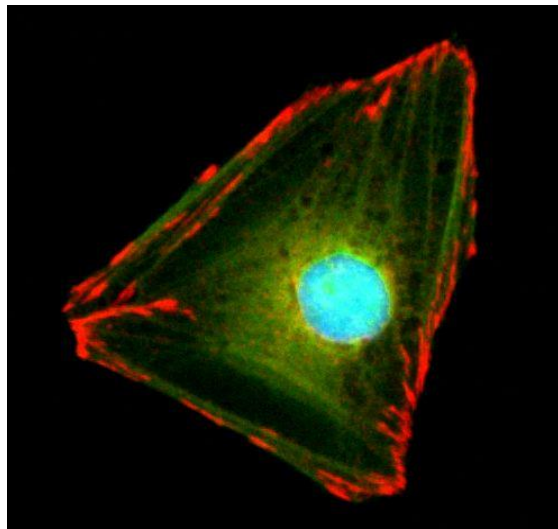
**STORAGE CONDITIONS:** Store at -20°C. Avoid repeated freeze / thaw cycles.

**APPLICATIONS AND USAGE:** Western Blot (WB): 1:1000-1:2000 dilution.

Immunocytochemistry (ICC): 1:1000-1:2000 dilution.



Western Blot of HeLa cell lysate, using anti-Paxillin rabbit monoclonal Antibody Clone RM256 at a 1:1000 dilution.



Immunocytochemical staining of HeLa cells, using anti-Paxillin rabbit monoclonal Antibody Clone RM256 (red). Actin filaments have been labeled with fluorescein phalloidin (green), and nucleus labeled with DAPI (blue).

**RELATED PRODUCTS:**

- Anti-PEG, Rabbit Monoclonal Antibody (Cat# A1811).
- Anti- $\alpha$ -Tubulin, Rabbit Monoclonal Antibody (Cat# A1812).
- Anti- $\beta$ -Actin, Rabbit Monoclonal Antibody (Cat# A1813).
- Anti-GAPDH, Rabbit Monoclonal Antibody (Cat# A1814).
- Anti-25-OH Vitamin D3, Rabbit Monoclonal Antibody (Cat# A1815).
- Anti-Estradiol, Rabbit Monoclonal Antibody (Cat# A1816).
- Anti-AR (N-terminal), Rabbit Monoclonal Antibody (Cat# A1817)

***FOR RESEARCH USE ONLY! Not to be used on humans.***