

# Anti-MYD88, Rabbit Monoclonal Antibody

**CATALOG NO.:** A1822-50 50 µl.

**BACKGROUND DESCRIPTION:** Rabbit monoclonal to MYD88.

**ANTIBODY TYPE:** Monoclonal

**CLONE:** RM306

**HOST/ISOTYPE:** Human/Mouse chimeric / Rabbit IgG.

**IMMUNOGEN:** A peptide corresponding to the N-terminus of human MyD88.

**SPECIFICITY:** RM306 reacts to human myeloid differentiation primary response protein MyD88

**PURIFICATION:** Protein A affinity purified from an animal origin-free culture supernatant.

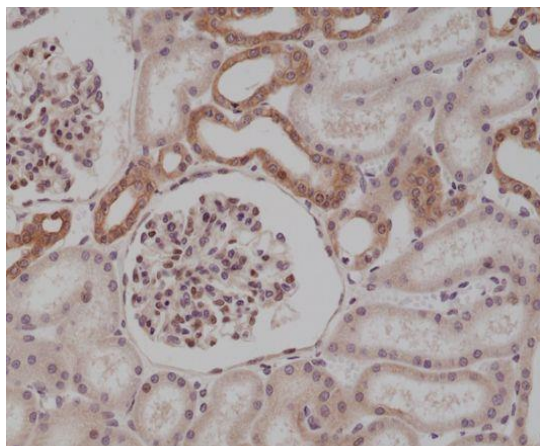
**FORM:** Liquid.

**FORMULATION:** 50% Glycerol/PBS with 1% BSA and 0.09% sodium azide

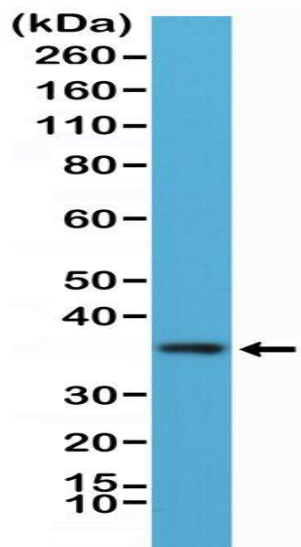
**SPECIES REACTIVITY:** Human.

**STORAGE CONDITIONS:** Store at -20°C. Avoid repeated freeze / thaw cycles.

**APPLICATIONS AND USAGE:** Immunohistochemistry (IHC): 1:100-1:250 dilution.  
Western Blot (WB): 1:100-1:200 dilution.



Immunohistochemical staining of formalin fixed and paraffin embedded human kidney tissue section using anti-MyD88 rabbit monoclonal antibody (Clone RM306) at a 1:250 dilution.



Western Blot of K562 cells lysate using anti-MyD88 rabbit monoclonal antibody (Clone RM306) at a 1:100 dilution.

**RELATED PRODUCTS:**

- Anti-S100-beta, Rabbit Monoclonal Antibody (Cat# A1821).
- Anti-CD140b, Rabbit Monoclonal Antibody (Cat# A1820).
- Anti-PEG, Rabbit Monoclonal Antibody (Cat# A1811).
- Anti- $\alpha$ -Tubulin, Rabbit Monoclonal Antibody (Cat# A1812).
- Anti- $\beta$ -Actin, Rabbit Monoclonal Antibody (Cat# A1813).
- Anti-GAPDH, Rabbit Monoclonal Antibody (Cat# A1814).
- Anti-25-OH Vitamin D3, Rabbit Monoclonal Antibody (Cat# A1815).
- Anti-Estradiol, Rabbit Monoclonal Antibody (Cat# A1816).
- Anti-N-Cadherin (CDH2), Rabbit Monoclonal Antibody (Cat# A1818).
- Anti-Paxillin, Rabbit Monoclonal Antibody (Cat# A1819).

***FOR RESEARCH USE ONLY! Not to be used on humans.***