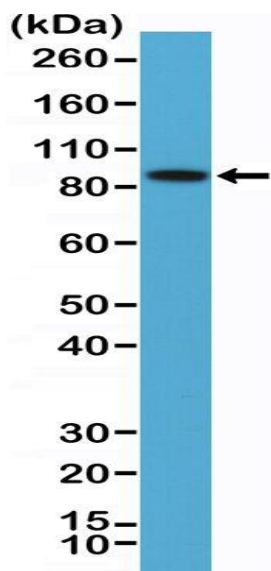


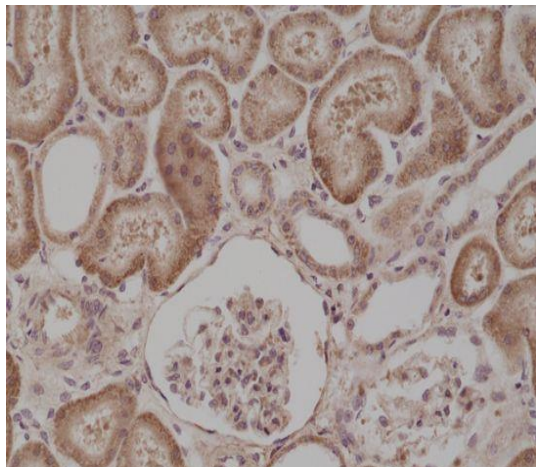
# Anti-BRAF, Rabbit Monoclonal Antibody

**CATALOG NO.:** A1823-50 50 µl.

<b>BACKGROUND DESCRIPTION:</b>	Rabbit monoclonal to BRAF
<b>ANTIBODY TYPE:</b>	Monoclonal
<b>CLONE:</b>	RM308
<b>HOST/ISOTYPE:</b>	Rabbit / Rabbit IgG.
<b>IMMUNOGEN:</b>	A peptide corresponding to the residues near N-terminus of human B-raf.
<b>SPECIFICITY:</b>	RM308 reacts to human serine/threonine-protein kinase B-raf (BRAF). It may also react to mouse B-raf, as predicted by immunogen homology.
<b>PURIFICATION:</b>	Protein A affinity purified from an animal origin-free culture supernatant.
<b>FORM:</b>	Liquid.
<b>FORMULATION:</b>	50% Glycerol/PBS with 1% BSA and 0.09% sodium azide
<b>SPECIES REACTIVITY:</b>	Human.
<b>STORAGE CONDITIONS:</b>	Store at -20°C. Avoid repeated freeze / thaw cycles.
<b>APPLICATIONS AND USAGE:</b>	Western Blot (WB): 1:100-1:200 dilution. Immunohistochemistry (IHC): 1:200-1:500 dilution.



Western Blot of K562 cells lysate using anti-B-raf rabbit monoclonal antibody (Clone RM308) at a 1:100 dilution.



Immunohistochemical staining of formalin fixed and paraffin embedded human kidney tissue section using anti-B-raf rabbit monoclonal antibody (Clone RM308) at a 1:500 dilution.

**RELATED PRODUCTS:**

- Anti-S100-beta, Rabbit Monoclonal Antibody (Cat# A1821).
- Anti-CD140b, Rabbit Monoclonal Antibody (Cat# A1820).
- Anti-PEG, Rabbit Monoclonal Antibody (Cat# A1811).
- Anti- $\alpha$ -Tubulin, Rabbit Monoclonal Antibody (Cat# A1812).
- Anti- $\beta$ -Actin, Rabbit Monoclonal Antibody (Cat# A1813).
- Anti-GAPDH, Rabbit Monoclonal Antibody (Cat# A1814).
- Anti-25-OH Vitamin D3, Rabbit Monoclonal Antibody (Cat# A1815).
- Anti-Estradiol, Rabbit Monoclonal Antibody (Cat# A1816).
- Anti-N-Cadherin (CDH2), Rabbit Monoclonal Antibody (Cat# A1818).
- Anti-Paxillin, Rabbit Monoclonal Antibody (Cat# A1819).

***FOR RESEARCH USE ONLY! Not to be used on humans.***