

# Anti-PD-L1 (CD274) (B7-H1), Rabbit Monoclonal Antibody

**CATALOG NO.:** A1824-50 50 µl.

**BACKGROUND DESCRIPTION:** Rabbit monoclonal to PD-L1 (CD274) (B7-H1).

**ANTIBODY TYPE:** Monoclonal

**CLONE:** RM320

**HOST/ISOTYPE:** Rabbit / Rabbit IgG.

**IMMUNOGEN:** A peptide corresponding to the C-terminus of human PD-L1.

**SPECIFICITY:** RM320 reacts to human PD-L1 (CD274) (B7-H1)

**PURIFICATION:** Protein A affinity purified from an animal origin-free culture supernatant.

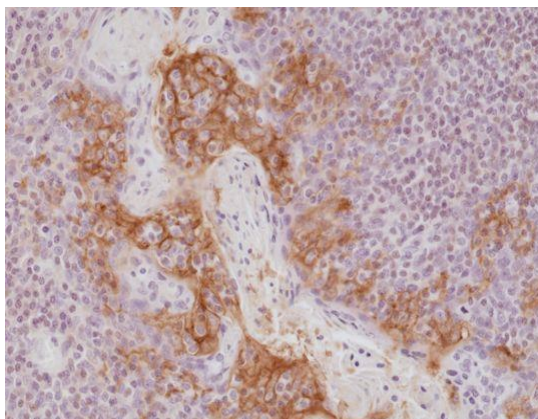
**FORM:** Liquid.

**FORMULATION:** 50% Glycerol/PBS with 1% BSA and 0.09% sodium azide

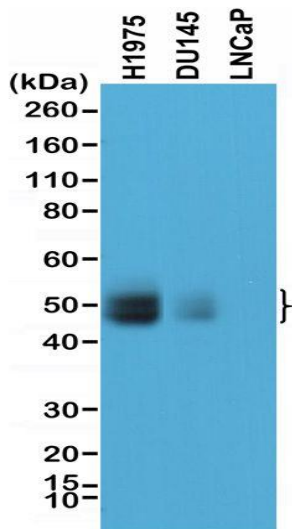
**SPECIES REACTIVITY:** Human.

**STORAGE CONDITIONS:** Store at -20°C. Avoid repeated freeze / thaw cycles.

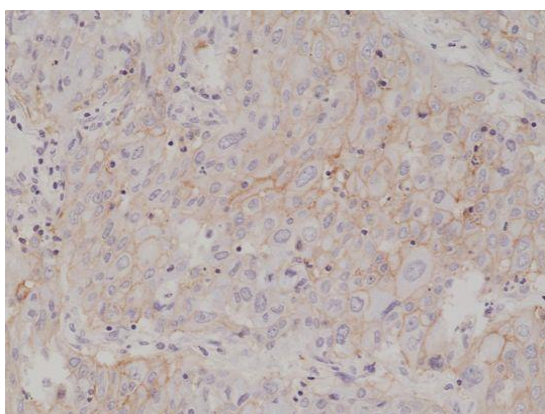
**APPLICATIONS AND USAGE:** Immunohistochemistry (IHC): 1:200-1:1000 dilution.  
Western Blot (WB): 1:500-1:1000 dilution.  
Immunocytochemistry (ICC): 1:200-1:500 dilution.



Immunohistochemical staining of formalin fixed and paraffin embedded human tonsil tissue section using anti-PD-L1 rabbit monoclonal antibody (Clone RM320) at a 1:1000 dilution.



Western Blot of lysates H1975, DU145, and LNCaP cells, using anti-PD-L1 rabbit monoclonal antibody (Clone RM320) at a 1:1000 dilution.



Immunohistochemical staining of formalin fixed and paraffin embedded human lung cancer tissue section using anti-PD-L1 rabbit monoclonal antibody (Clone RM320) at a 1:1000 dilution.

**RELATED PRODUCTS:**

- Anti-PEG, Rabbit Monoclonal Antibody (Cat# A1811).
- Anti- $\alpha$ -Tubulin, Rabbit Monoclonal Antibody (Cat# A1812).
- Anti- $\beta$ -Actin, Rabbit Monoclonal Antibody (Cat# A1813).
- Anti-GAPDH, Rabbit Monoclonal Antibody (Cat# A1814).
- Anti-25-OH Vitamin D3, Rabbit Monoclonal Antibody (Cat# A1815).
- Anti-Estradiol, Rabbit Monoclonal Antibody (Cat# A1816).
- Anti-N-Cadherin (CDH2), Rabbit Monoclonal Antibody (Cat# A1818).
- Anti-S100-beta, Rabbit Monoclonal Antibody (Cat# A1821).
- Anti-CD140b, Rabbit Monoclonal Antibody (Cat# A1820).

**FOR RESEARCH USE ONLY! Not to be used on humans.**