

Anti-PD-1 (CD279), Rabbit Monoclonal Antibody

CATALOG NO.: A1825-50 50 µl.

BACKGROUND DESCRIPTION: Rabbit monoclonal to PD-1 (CD279)

ANTIBODY TYPE: Monoclonal

CLONE: RM309

HOST/ISOTYPE: Human/Mouse chimeric / Rabbit IgG.

IMMUNOGEN: A peptide corresponding to the N-terminus of human PD-1.

SPECIFICITY: RM309 reacts to human PD-1 (Programmed cell death protein 1) (CD279).

PURIFICATION: Protein A affinity purified from an animal origin-free culture supernatant.

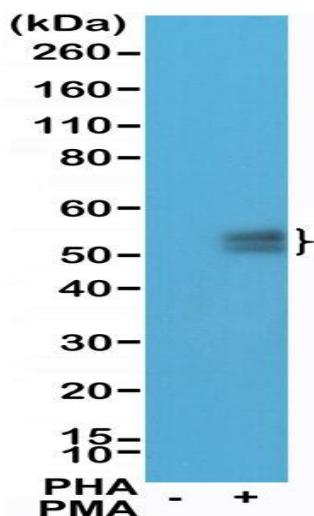
FORM: Liquid.

FORMULATION: 50% Glycerol/PBS with 1% BSA and 0.09% sodium azide

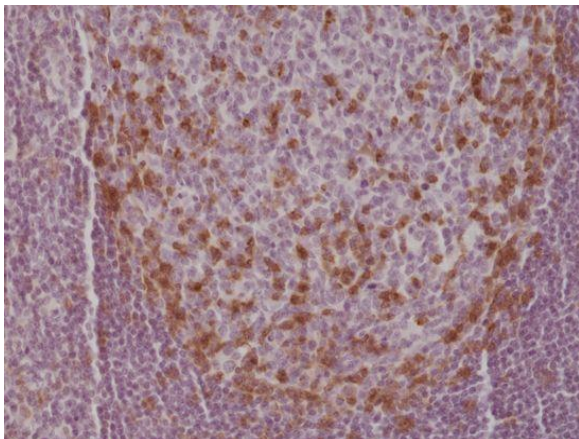
SPECIES REACTIVITY: Human.

STORAGE CONDITIONS: Store at -20°C. Avoid repeated freeze / thaw cycles.

APPLICATIONS AND USAGE: Western Blot (WB): 1:100-1:200 dilution.
Immunohistochemistry (IHC): 1:200-1:500 dilution.



Western Blot the lysates of Jurkat cells non-treated (-) or treated (+) with PHA and PMA, using anti- PD-1 (CD279) rabbit monoclonal antibody at a 1:100 dilution.



Immunohistochemical staining of formalin fixed and paraffin embedded human tonsil tissue section using anti-PD-1 rabbit monoclonal antibody at a 1:500 dilution.

RELATED PRODUCTS:

- Anti-25-OH Vitamin D3, Rabbit Monoclonal Antibody (Cat# A1815).
- Anti-Estradiol, Rabbit Monoclonal Antibody (Cat# A1816).
- Anti-AR (N-terminal), Rabbit Monoclonal Antibody (Cat# A1817).
- Anti-N-Cadherin (CDH2), Rabbit Monoclonal Antibody (Cat# A1818).
- Anti-Paxillin, Rabbit Monoclonal Antibody (Cat# A1819).
- Anti-CD140b, Rabbit Monoclonal Antibody (Cat# A1820).
- Anti-S100-beta, Rabbit Monoclonal Antibody (Cat# A1821).
- Anti-MYD88, Rabbit Monoclonal Antibody (Cat# A1822).
- Anti-BRAF, Rabbit Monoclonal Antibody (Cat# A1823).
- Anti-PD-L1 (CD274) (B7-H1), Rabbit Monoclonal Antibody (Cat# A1824).

FOR RESEARCH USE ONLY! Not to be used on humans.