

Anti-NeuN (Fox3, RBFOX3), Rabbit Monoclonal Antibody

CATALOG NO.: A1826-50 50 µl.

BACKGROUND DESCRIPTION: Rabbit monoclonal to NeuN (Fox3, RBFOX3)

ANTIBODY TYPE: Monoclonal

CLONE: RM312

HOST/ISOTYPE: Rabbit / Rabbit IgG.

IMMUNOGEN: A peptide corresponding to the N-terminus of human NeuN (Fox3, RBFOX3).

SPECIFICITY: RM312 reacts to human NeuN (Fox3, RBFOX3). The clone may also react to mouse or rat NeuN, as predicted by immunogen homology.

PURIFICATION: Protein A affinity purified from an animal origin-free culture supernatant.

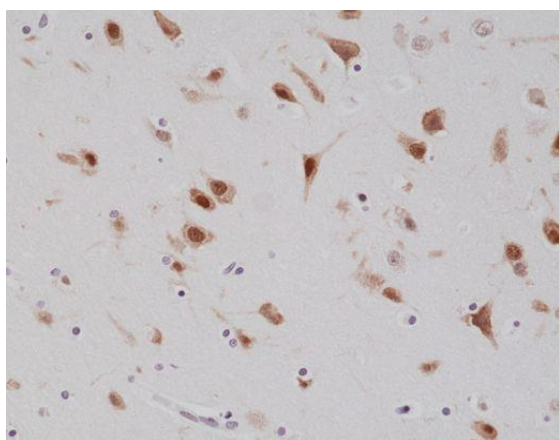
FORM: Liquid.

FORMULATION: 50% Glycerol/PBS with 1% BSA and 0.09% sodium azide

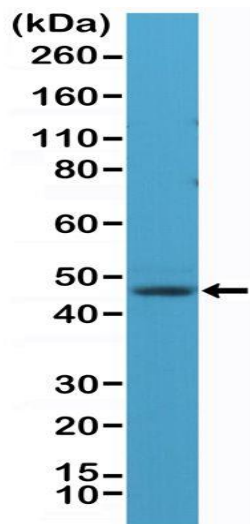
SPECIES REACTIVITY: Human.

STORAGE CONDITIONS: Store at -20°C. Avoid repeated freeze / thaw cycles.

APPLICATIONS AND USAGE: Western Blot (WB): 1:1000-1:2000 dilution.
Immunohistochemistry (IHC): 1:500-1:1000 dilution.



Immunohistochemical staining of formalin fixed and paraffin embedded human brain tissue section using anti-NeuN rabbit monoclonal antibody at a 1:1000 dilution.



Western Blot of human brain tissue lysate using anti-NeuN rabbit monoclonal antibody at a 1:1000 dilution.

RELATED PRODUCTS:

- Anti-25-OH Vitamin D3, Rabbit Monoclonal Antibody (Cat# A1815).
- Anti-Estradiol, Rabbit Monoclonal Antibody (Cat# A1816).
- Anti-AR (N-terminal), Rabbit Monoclonal Antibody (Cat# A1817).
- Anti-N-Cadherin (CDH2), Rabbit Monoclonal Antibody (Cat# A1818).
- Anti-Paxillin, Rabbit Monoclonal Antibody (Cat# A1819).
- Anti-CD140b, Rabbit Monoclonal Antibody (Cat# A1820).
- Anti-S100-beta, Rabbit Monoclonal Antibody (Cat# A1821).
- Anti-MYD88, Rabbit Monoclonal Antibody (Cat# A1822).
- Anti-BRAF, Rabbit Monoclonal Antibody (Cat# A1823).
- Anti-PD-L1 (CD274) (B7-H1), Rabbit Monoclonal Antibody (Cat# A1824).

FOR RESEARCH USE ONLY! Not to be used on humans.