

Anti-CEA (CD66e), Rabbit Monoclonal Antibody

CATALOG NO.: A1828-50 50 µl.

BACKGROUND DESCRIPTION: Rabbit monoclonal to CEA (Carcinoembryonic Antigen), CD66e

ANTIBODY TYPE: Monoclonal

CLONE: RM326

HOST/ISOTYPE: Rabbit / Rabbit IgG.

IMMUNOGEN: Native CEA protein purified from human liver tissue.

SPECIFICITY: RM326 reacts to human CEA (Carcinoembryonic Antigen) (CD66e).

PURIFICATION: Protein A affinity purified from an animal origin-free culture supernatant.

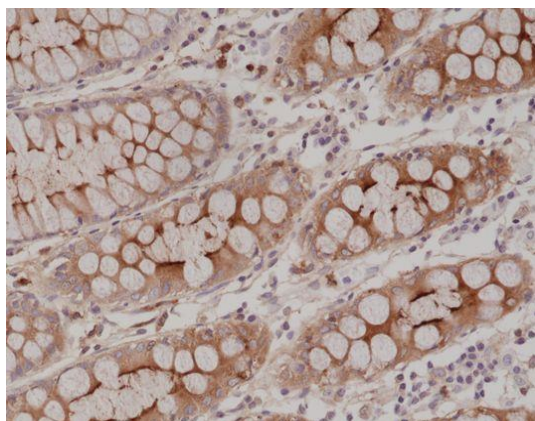
FORM: Liquid.

FORMULATION: 50% Glycerol/PBS with 1% BSA and 0.09% sodium azide

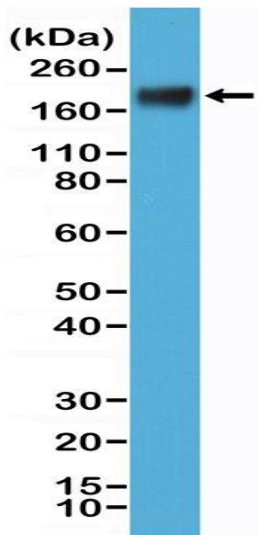
SPECIES REACTIVITY: Human.

STORAGE CONDITIONS: Store at -20°C. Avoid repeated freeze / thaw cycles.

APPLICATIONS AND USAGE: Immunohistochemistry (IHC): 1:1000-1:2000 dilution.
Western Blot (WB): 1:1000-1:2000 dilution.
ELISA: 1:1000-1:5000 dilution.



Immunohistochemical staining of formalin fixed and paraffin embedded human colon tissue section using anti-CEA rabbit monoclonal antibody at a 1:2000 dilution.



Western Blot of MCF-7 cell lysate using anti-CEA rabbit monoclonal antibody at a 1:1000 dilution.

RELATED PRODUCTS:

- Anti-N-Cadherin (CDH2), Rabbit Monoclonal Antibody (Cat# A1818).
- Anti-Paxillin, Rabbit Monoclonal Antibody (Cat# A1819).
- Anti-CD140b, Rabbit Monoclonal Antibody (Cat# A1820).
- Anti-S100-beta, Rabbit Monoclonal Antibody (Cat# A1821).
- Anti-MYD88, Rabbit Monoclonal Antibody (Cat# A1822).
- Anti-BRAF, Rabbit Monoclonal Antibody (Cat# A1823).
- Anti-PD-L1 (CD274) (B7-H1), Rabbit Monoclonal Antibody (Cat# A1824).
- Anti-PD-1 (CD279), Rabbit Monoclonal Antibody (Cat# A1825).
- Anti-NeuN (Fox3, RBFOX3), Rabbit Monoclonal Antibody (Cat# A1826).

FOR RESEARCH USE ONLY! Not to be used on humans.