

# Anti-CD19, Rabbit Monoclonal Antibody

**CATALOG NO.:** A1829-50 50 µl.

**BACKGROUND DESCRIPTION:** Rabbit monoclonal to CD19.

**ANTIBODY TYPE:** Monoclonal

**CLONE:** RM332

**HOST/ISOTYPE:** Rabbit / Rabbit IgG.

**IMMUNOGEN:** A peptide corresponding to the C-terminus of human CD19.

**SPECIFICITY:** RM332 reacts to the cytoplasmic domain of human CD19.

**PURIFICATION:** Protein A affinity purified from an animal origin-free culture supernatant.

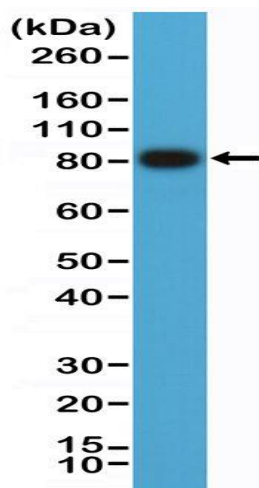
**FORM:** Liquid.

**FORMULATION:** 50% Glycerol/PBS with 1% BSA and 0.09% sodium azide

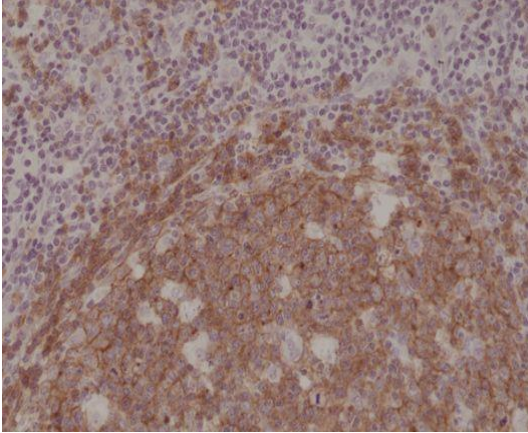
**SPECIES REACTIVITY:** Human.

**STORAGE CONDITIONS:** Store at -20°C. Avoid repeated freeze / thaw cycles.

**APPLICATIONS AND USAGE:** Western Blot (WB): 1:1000-1:2000 dilution.  
Immunohistochemistry (IHC): 1:500-1:1000 dilution.



Western Blot of Raji cell lysate using anti-CD19, Rabbit monoclonal antibody at a 1:1000 dilution.



Immunohistochemical staining of formalin fixed and paraffin embedded human Tonsil tissue section using anti-CD19, Rabbit monoclonal antibody at a 1:1000 dilution.

**RELATED PRODUCTS:**

- Anti-CD140b, Rabbit Monoclonal Antibody (Cat# A1820).
- Anti-S100-beta, Rabbit Monoclonal Antibody (Cat# A1821).
- Anti-MYD88, Rabbit Monoclonal Antibody (Cat# A1822).
- Anti-BRAF, Rabbit Monoclonal Antibody (Cat# A1823).
- Anti-PD-L1 (CD274) (B7-H1), Rabbit Monoclonal Antibody (Cat# A1824).
- Anti-PD-1 (CD279), Rabbit Monoclonal Antibody (Cat# A1825).
- Anti-NeuN (Fox3, RBFOX3), Rabbit Monoclonal Antibody (Cat# A1826).
- Anti-OX40 (CD134), Rabbit Monoclonal Antibody (Cat# A1827).
- Anti-CEA (CD66e), Rabbit Monoclonal Antibody (Cat# A1828)

***FOR RESEARCH USE ONLY! Not to be used on humans.***