

Anti-CD276 (B7-H3), Rabbit Monoclonal Antibody

CATALOG NO.: A1830-50 50 µl.

BACKGROUND DESCRIPTION: Rabbit monoclonal to CD276 (B7-H3).

ANTIBODY TYPE: Monoclonal

CLONE: RM335

HOST/ISOTYPE: Rabbit / Rabbit IgG.

IMMUNOGEN: A peptide corresponding to the C-terminus of human CD276 (B7-H3).

SPECIFICITY: RM335 reacts to the cytoplasmic domain of human CD276 (B7-H3).

PURIFICATION: Protein A affinity purified from an animal origin-free culture supernatant.

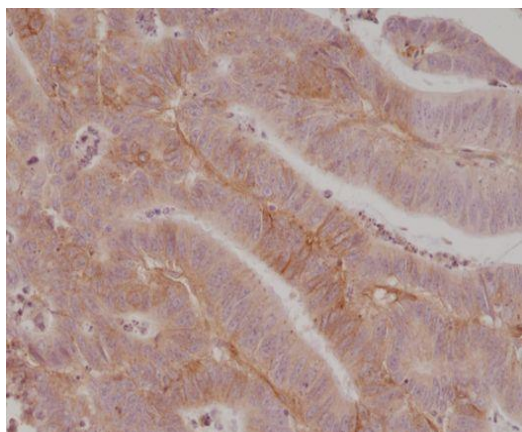
FORM: Liquid.

FORMULATION: 50% Glycerol/PBS with 1% BSA and 0.09% sodium azide

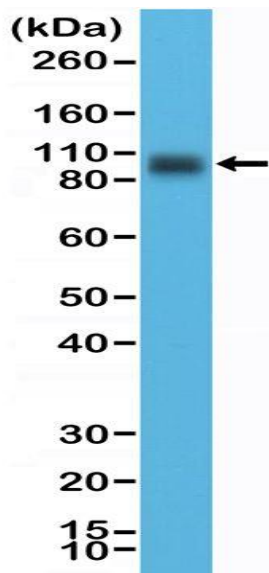
SPECIES REACTIVITY: Human.

STORAGE CONDITIONS: Store at -20°C. Avoid repeated freeze / thaw cycles.

APPLICATIONS AND USAGE: Western Blot (WB): 1:5000-1:10,000 dilution.
Immunohistochemistry (IHC): 1:500-1:1000 dilution.



Immunohistochemical staining of formalin fixed and paraffin embedded human colon cancer tissue section using anti-CD276 (B7-H3) rabbit monoclonal antibody at a 1:1000 dilution.



Western Blot of LNCaP cell lysate using anti-CD276 (B7-H3) rabbit monoclonal antibody at a 1:10,000 dilution.

RELATED PRODUCTS:

- Anti-CD140b, Rabbit Monoclonal Antibody (Cat# A1820).
- Anti-S100-beta, Rabbit Monoclonal Antibody (Cat# A1821).
- Anti-MYD88, Rabbit Monoclonal Antibody (Cat# A1822).
- Anti-BRAF, Rabbit Monoclonal Antibody (Cat# A1823).
- Anti-PD-L1 (CD274) (B7-H1), Rabbit Monoclonal Antibody (Cat# A1824).
- Anti-PD-1 (CD279), Rabbit Monoclonal Antibody (Cat# A1825).
- Anti-NeuN (Fox3, RBFOX3), Rabbit Monoclonal Antibody (Cat# A1826).
- Anti-OX40 (CD134), Rabbit Monoclonal Antibody (Cat# A1827).
- Anti-CEA (CD66e), Rabbit Monoclonal Antibody (Cat# A1828)

FOR RESEARCH USE ONLY! Not to be used on humans.