

Anti-Glucose Isomerase Antibody

CATALOG NO.: A1831-30T 30 µg.
A1831-100 100 µg.

BACKGROUND DESCRIPTION: Glucose Isomerase catalyzes the reversible isomerization of glucose to fructose and that of xylose to xylulose. The enzyme is widely used in the industrial production of high-fructose corn syrup (HFCS) as well as in bioethanol fermentation from hemicellulosic hydrolysates.

ALTERNATE NAMES: D-Xylose Isomerase, fructose-isomerase, D-xylose aldose-ketose-isomerase, D-xylose ketoisomerase, D-xylose ketol-isomerase.

ANTIBODY TYPE: Polyclonal

CONCENTRATION: 0.5 mg/ml

HOST/ISOTYPE: Rabbit / Rabbit IgG.

IMMUNOGEN: D-Glucose Isomerase Recombinant from *S. rubiginosus* (Cat# P1307).(Internal ID: Q87)

PURIFICATION: Affinity purified.

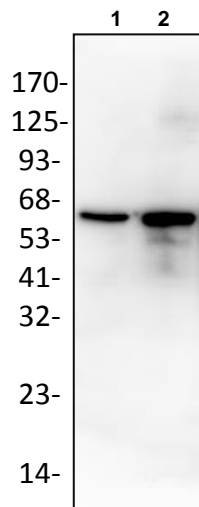
FORM: Liquid.

FORMULATION: In phosphate buffered saline (PBS), pH 7.2, containing 30% glycerol, 0.5% BSA, 5 mM EDTA and 0.03% proclin

SPECIES REACTIVITY: *S. rubiginosus*.

STORAGE CONDITIONS: Store at -20°C; Store at -20°C. Avoid repeated freeze/thaw cycles..

APPLICATIONS AND USAGE: Western blot: 1-4 µg **Note: This information is only intended as a guide. The optimal dilutions must be determined by the user.**



Western blot of Glucose Isomerase antibody.

Lane 1: Rec. Glucose Isomerase (2 ng)
Lane 2: Rec. Glucose Isomerase (10 ng)

RELATED PRODUCTS:

Glucose Oxidase Activity Colorimetric/Fluorometric Assay Kit (K788).
D-Glucose Isomerase, Recombinant (P1307).

FOR RESEARCH USE ONLY! Not to be used on humans