

Anti-CD5 Rabbit Monoclonal Antibody (RM314)

CATALOG NO.: A1833-50 50 µL.

BACKGROUND DESCRIPTION: The CD5 antigen is found on 95% of thymocytes and 72% of peripheral blood lymphocytes. In lymph nodes, the main reactivity is observed in T cell areas. Anti-CD5 is a pan T-cell marker that also reacts with a range of neoplastic B-cells, e.g. chronic lymphocytic leukemia/small lymphocytic lymphoma (CLL/SLL), mantle cell lymphoma, and a subset (~10%) of diffuse large B-cell lymphoma. CD5 aberrant expression is useful in making a diagnosis of mature T-cell neoplasms. Anti-CD5 detection is diagnostic in CLL/SLL within a panel of other B-cell markers, especially one that includes anti-CD23. Anti-CD5 is also very useful in differentiating among mature small lymphoid cell malignancies. In addition, anti-CD5 can be used in distinguishing thymic carcinoma (+) from thymoma (-). Anti-CD5 does not react with granulocytes or monocytes.

ANTIBODY TYPE: Monoclonal

CLONE: RM314

HOST/ISOTYPE: Rabbit / Rabbit IgG.

IMMUNOGEN: A peptide corresponding to the C-terminus of human CD5.

PURIFICATION: Protein A affinity purified from an animal origin-free culture supernatant.

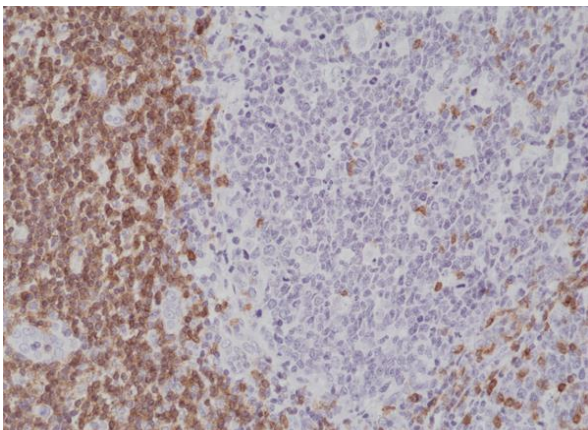
FORM: Liquid.

FORMULATION: 50% Glycerol/PBS with 1% BSA and 0.09% sodium azide

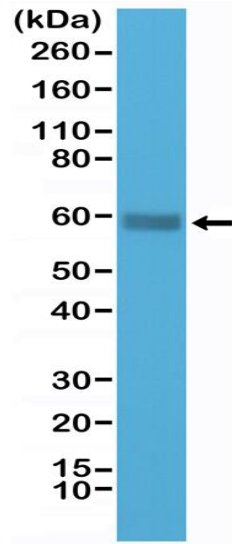
SPECIES REACTIVITY: Human.

STORAGE CONDITIONS: Store at -20°C; Avoid repeated freeze/thaw cycles.

APPLICATIONS AND USAGE: Western Blot: 1:1000-1:2000.
IHC: 1:500-1:1000.



Immunohistochemical staining of formalin fixed and paraffin embedded human tonsil tissue section using anti-CD5 rabbit monoclonal antibody (Clone RM314) at a 1:1000 dilution.



Western Blot of Jurkat cells lysate using anti-CD5 rabbit monoclonal antibody (Clone RM314) at a 1:1000 dilution.

RELATED PRODUCTS:

Anti-CD5 Antibody (Clone C5/473) (Cat # A1543).
CD5, human recombinant (Cat# 7315).

FOR RESEARCH USE ONLY! Not to be used on humans.