

# Anti-CD56 (NCAM1) Rabbit Monoclonal Antibody (RM315)

**CATALOG NO.:** A1834-50 50  $\mu$ L.

**BACKGROUND DESCRIPTION:** Human CD56 is an adhesion molecule from the Ig superfamily which is restricted to NK cells in the immune system. It is believed that NK cells form a first line of defense against tumor cells and cells infected with bacteria and viruses.

**ANTIBODY TYPE:** Monoclonal

**CLONE:** RM315

**HOST/ISOTYPE:** Rabbit / Rabbit IgG.

**IMMUNOGEN:** A peptide corresponding to the C-terminus of human CD56..

**PURIFICATION:** Protein A affinity purified from an animal origin-free culture supernatant.

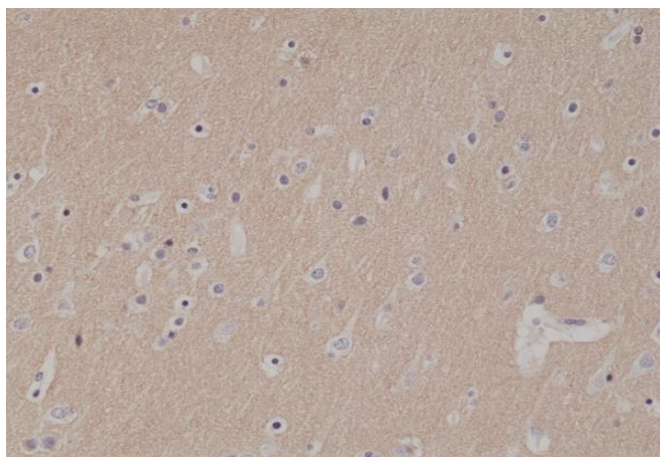
**FORM:** Liquid.

**FORMULATION:** 50% Glycerol/PBS with 1% BSA and 0.09% sodium azide

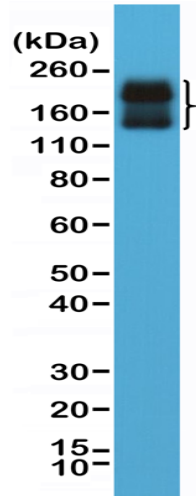
**SPECIES REACTIVITY:** Human.

**STORAGE CONDITIONS:** Store at -20°C; Avoid repeated freeze / thaw cycles..

**APPLICATIONS AND USAGE:** Western Blot: 1:1000-1:2000.  
IHC: 1:500-1:1000.



Immunohistochemical staining of formalin fixed and paraffin embedded human brain tissue section using anti-CD56 rabbit monoclonal antibody (Clone RM315) at a 1:1000 dilution.



Western Blot of human brain tissue lysate using anti-CD56 rabbit monoclonal antibody (Clone RM315) at a 1:2000 dilution.

**RELATED PRODUCTS:**

Human CellExp™ NCAM-1/CD56, human recombinant (Cat# P1016).  
Anti-Human CD56 PE Antibody (MY31) (Cat# A1586).  
Anti-CD56 / NCAM1 Antibody (Clone SPM128) (Cat# A1553).

***FOR RESEARCH USE ONLY! Not to be used on humans.***