

Anti-PLAP (Placental alkaline phosphatase) Rabbit Monoclonal Antibody (RM317)

CATALOG NO.: A1836-50 50 µL.

BACKGROUND DESCRIPTION: Alkaline Phosphatase (ALP) is a hydrolase enzyme responsible for removing phosphate groups in the 5- and 3- positions from many types of molecules, including nucleotides, proteins, and alkaloids. In humans, alkaline phosphatase is present in all tissues throughout the entire body, but is particularly concentrated in liver, bile duct, kidney, bone, and the placenta. The optimal pH for the enzyme activity is pH 10 in standard conditions. There are at least four distinct but related alkaline phosphatases: intestinal, placental, placental-like, and liver/bone/kidney (tissue non-specific). The first three are located together on chromosome 2 while the tissue non-specific form is located on chromosome 1. The product of this gene is a membrane bound glycosylated enzyme, also referred to as the heat stable form that is expressed primarily in the placenta although it is closely related to the intestinal form of the enzyme as well as to the placental-like form. The coding sequence for this form of alkaline phosphatase is unique in that the 3' untranslated region contains multiple copies of an Alu family repeat. In addition, this gene is polymorphic and three common alleles (type 1, type 2 and type 3) for this form of alkaline phosphatase have been well characterized.

ANTIBODY TYPE: Monoclonal

CLONE: RM317

HOST/ISOTYPE: Rabbit / Rabbit IgG.

IMMUNOGEN: A peptide corresponding to the N-terminus of human PLAP (Placental alkaline phosphatase).

PURIFICATION: Protein A affinity purified from an animal origin-free culture supernatant.

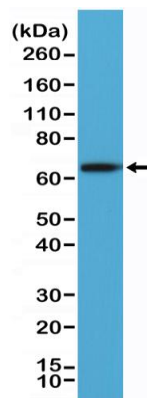
FORM: Liquid.

FORMULATION: 50% Glycerol/PBS with 1% BSA and 0.09% sodium azide

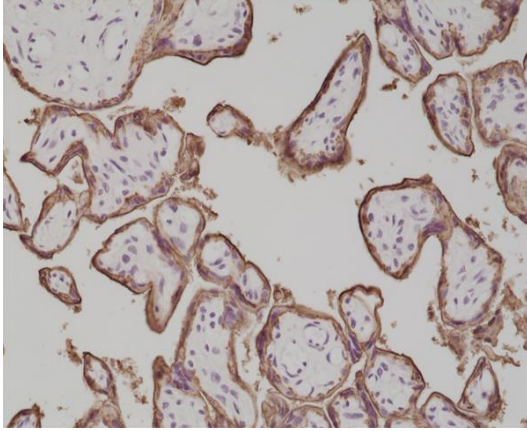
SPECIES REACTIVITY: Human.

STORAGE CONDITIONS: Store at -20°C; Avoid repeated freeze / thaw cycles.

APPLICATIONS AND USAGE: IHC: 1:500-1:1000.
Western Blot: 1:1000-1:2000.



Western Blot of A431 cells lysate using anti-PLAP rabbit monoclonal antibody (Clone RM317) at a 1:2000 dilution.



Immunohistochemical staining of formalin fixed and paraffin embedded human placenta tissue section using anti-PLAP rabbit monoclonal antibody (Clone RM317) at a 1:1000 dilution.

RELATED PRODUCTS:

Alkaline phosphatase, placental, human recombinant (Cat# P1044).
Alkaline phosphatase, mouse recombinant (Cat# P1098).
Alkaline Phosphatase, Calf Intestine (Cat# 7585).

FOR RESEARCH USE ONLY! Not to be used on humans.