

Anti-Acetyl-alpha-Tubulin (Lys40) Rabbit Monoclonal Antibody (RM318)

CATALOG NO.: A1837-50 50 μ L.

BACKGROUND DESCRIPTION: Tubulin is the major constituent of microtubules. It binds two moles of GTP, one at an exchangeable site on the beta chain and one at a non-exchangeable site on the alpha chain.

ANTIBODY TYPE: Monoclonal

CLONE: RM318

HOST/ISOTYPE: Rabbit / Rabbit IgG

IMMUNOGEN: An acetyl-peptide corresponding to Acetyl- alpha-Tubulin (Lys40).

PURIFICATION: Protein A affinity purified from an animal origin-free culture supernatant.

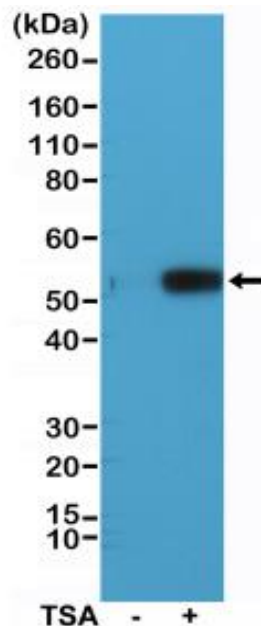
FORM: Liquid

FORMULATION: 50% Glycerol/PBS with 1% BSA and 0.09% sodium azide

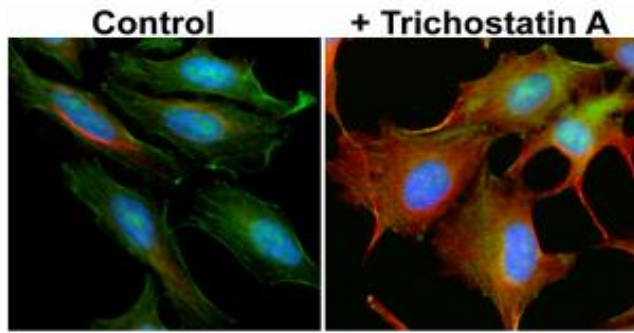
SPECIES REACTIVITY: Human

STORAGE CONDITIONS: Store at -20°C; Avoid repeated freeze / thaw cycles

APPLICATIONS AND USAGE: ICC: 1:1000-1:5000.
Western Blot: 1:1000-1:2000.



Western Blot analysis of HeLa cell lysates non- treated (-) or treated (+) with Trichostatin A (TSA), using anti-Acetyl-alpha-Tubulin (Lys40) rabbit monoclonal antibody (Clone RM318) at a 1:1000 dilution.



Immunocytochemistry of HeLa cells non-treated or treated with Trichostatin A (TSA), using anti-Acetyl- alpha-Tubulin (Lys40) rabbit monoclonal antibody (Clone RM318) at a 1:5000 dilution (red). Actin filaments have been labeled with fluorescein phalloidin (green), and nuclei with DAPI (blue).

RELATED PRODUCTS:

Tubulin Antibody (3708)
Anti-Beta-tubulin Antibody (A1216)
Anti- β -Tubulin Antibody (1E1-E8-H4) (A1334)

FOR RESEARCH USE ONLY! Not to be used on humans.