

Anti-Calretinin (CALB2) Rabbit Monoclonal Antibody (RM324)

CATALOG NO.: A1839-50 50 µL.

BACKGROUND DESCRIPTION: Calretinin is an intraCellular calcium-binding protein belonging to the troponin C superfamily characterized by a structural motif described as the EF-hand domain. The immunohistochemical detection of calretinin in developing cerebellum is restricted to the later stages indicated by weak staining from week 21 of gestation, in Purkinje and basket cells and in neurons of the dentate nucleus. The intensity of staining increases as the cerebellum matures. In tumors, calretinin has been detected in mesotheliomas and some pulmonary adenocarcinomas.

ANTIBODY TYPE: Monoclonal

CLONE: RM324

HOST/ISOTYPE: Rabbit / Rabbit IgG.

IMMUNOGEN: A peptide corresponding to N-terminus of human Calretinin).

PURIFICATION: Protein A affinity purified from an animal origin-free culture supernatant.

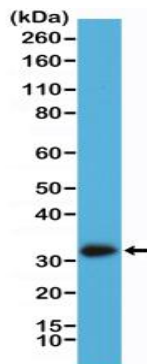
FORM: Liquid.

FORMULATION: 50% Glycerol/PBS with 1% BSA and 0.09% sodium azide

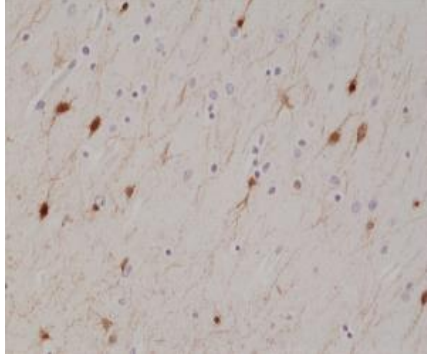
SPECIES REACTIVITY: Human.

STORAGE CONDITIONS: Store at -20°C; Avoid repeated freeze / thaw cycles.

APPLICATIONS AND USAGE: IHC: 1:500-1:1000.
Western Blot: 1:2000-1:4000.



Western Blot of A431 cell lysate using anti- Calretinin rabbit monoclonal antibody (Clone RM324) at a 1:2000 dilution.



Immunohistochemical staining of formalin fixed and paraffin embedded human brain tissue section using anti-Calretinin rabbit monoclonal antibody (Clone RM324) at a 1:1000 dilution.

RELATED PRODUCTS:

Calretinin, murine recombinant (Cat# 4809).

FOR RESEARCH USE ONLY! Not to be used on humans.