

# Anti-Caveolin-1 Rabbit Monoclonal Antibody (RM325)

CATALOG NO.: A1840-50 50 µl.

**BACKGROUND DESCRIPTION:** The lipid raft-associated protein Caveolin-1 (CAV1) is the major component of the inner surface of caveolae, small invaginations of the plasma membrane. Caveolin is a transmembrane adaptor molecule that can simultaneously recognize GPI-linked proteins and interact with downstream cytoplasmatic signaling molecules. It is highly expressed on exosomes derived from tumor tissues.

**ANTIBODY TYPE:** Monoclonal

**CLONE:** RM325

**HOST/ISOTYPE:** Rabbit / Rabbit IgG.

**IMMUNOGEN:** A peptide corresponding to the C-terminus of human Caveolin-1.

**PURIFICATION:** Protein A affinity purified from an animal origin-free culture supernatant.

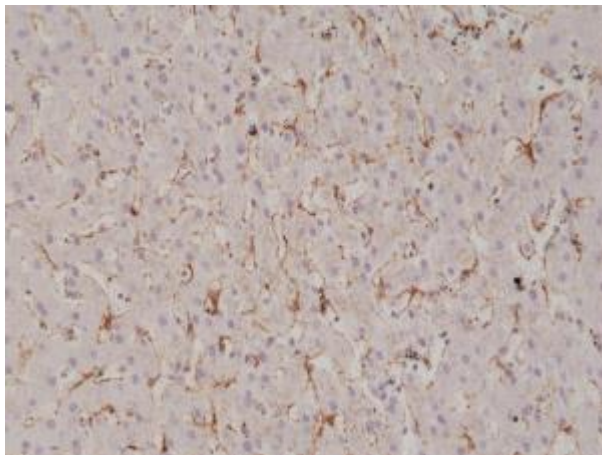
**FORM:** Liquid.

**FORMULATION:** 50% Glycerol/PBS with 1% BSA and 0.09% sodium azide

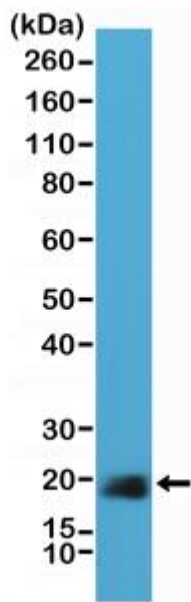
**SPECIES REACTIVITY:** Human.

**STORAGE CONDITIONS:** Store at -20°C; Avoid repeated freeze / thaw cycles.

**APPLICATIONS AND USAGE:** Western Blot: 1:5,000-1:40,000.  
IHC: 1:500-1:1000.



Immunohistochemical staining of formalin fixed and paraffin embedded human liver tissue section using anti-Caveolin-1 rabbit monoclonal antibody (Clone RM325) at a 1:1000 dilution.



Western Blot of HeLa cell lysate using anti-Caveolin-1 rabbit monoclonal antibody (Clone RM325) at a 1:40,000 dilution.

**RELATED PRODUCTS:**

Anti-human Caveolin-1 antibody (Cat# A1506).

***FOR RESEARCH USE ONLY! Not to be used on humans.***