

# Anti-PSMA (Prostate specific membrane antigen) Rabbit Monoclonal Antibody (RM327)

CATALOG NO.: A1841-50 50 µL.

**BACKGROUND DESCRIPTION:** Human Prostate Specific Membrane Antigen (PSMA), a tumor marker in prostate cancer encoded by FOLH1 gene, is a surface glycoprotein with high expression in prostate epithelium. PSMA expression level increases in primary and metastatic prostate cancer and the neovasculature of nonprostatic epithelial malignancies. Overexpression of PSMA is correlated with high tumor grade, non-diploid tumors, and advanced tumor stage. PSMA is used as a diagnostic and prognostic indicator of prostate cancer, and as a possible marker for various neurological disorders such as schizophrenia, Alzheimer disease and Huntington disease. It is also recognized as a viable target for cancer therapy.

**ANTIBODY TYPE:** Monoclonal

**CLONE:** RM327

**HOST/ISOTYPE:** Rabbit / Rabbit IgG.

**IMMUNOGEN:** A peptide corresponding to the C-terminus of human PSMA (Prostate-specific membrane antigen).

**PURIFICATION:** Protein A affinity purified from an animal origin-free culture supernatant.

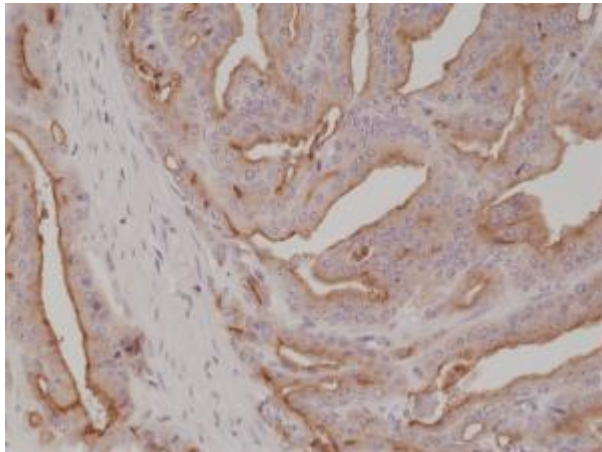
**FORM:** Liquid.

**FORMULATION:** 50% Glycerol/PBS with 1% BSA and 0.09% sodium azide

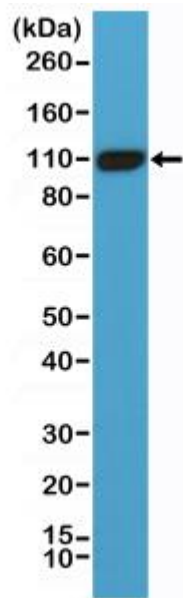
**SPECIES REACTIVITY:** Human.

**STORAGE CONDITIONS:** Store at -20°C; Avoid repeated freeze / thaw cycles.

**APPLICATIONS AND USAGE:** IHC: 1:500-1:1000.  
Western Blot: 1:1000-1:2000.



Immunohistochemical staining of formalin fixed and paraffin embedded human prostate cancer tissue section using anti-PSMA rabbit monoclonal antibody (Clone RM327) at a 1:1000 dilution.



Western Blot of LNCaP cell lysate using anti-PSMA rabbit monoclonal antibody (Clone RM327) at a 1:1000 dilution.

**RELATED PRODUCTS:**

Human CellExp™ PSMA / FOLH1, C-His Tag, human recombinant (Cat# P1304).  
Glutamate Carboxypeptidase II Inhibitor Screening Kit (Fluorometric) (Cat# K440).  
PicoProbe™ Glutamate Carboxypeptidase II Activity Assay Kit (Cat# K738).

***FOR RESEARCH USE ONLY! Not to be used on humans.***