

Anti-CK-14 (Cytokeratin-14) Rabbit Monoclonal Antibody (RM328)

CATALOG NO.: A1842-50 50 µL.

BACKGROUND DESCRIPTION: Cytokeratin 14 (CK14) is found in squamous epithelial basal cells, myoepithelium, some glandular epithelia, and mesothelial cells. Anti-Cytokeratin 14 is useful for distinguishing squamous cell carcinomas from other epithelial tumors, and for classifying metaplastic breast carcinomas.

ANTIBODY TYPE: Monoclonal

CLONE: RM328

HOST/ISOTYPE: Rabbit / Rabbit IgG.

IMMUNOGEN: A peptide corresponding to C-terminus of human Cytokeratin-14.

PURIFICATION: Protein A affinity purified from an animal origin-free culture supernatant.

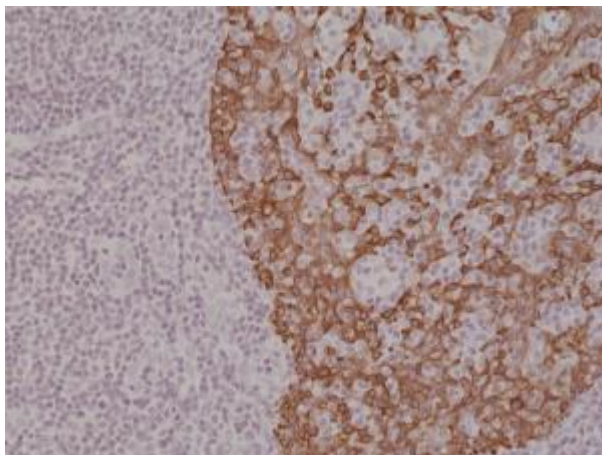
FORM: Liquid.

FORMULATION: 50% Glycerol/PBS with 1% BSA and 0.09% sodium azide

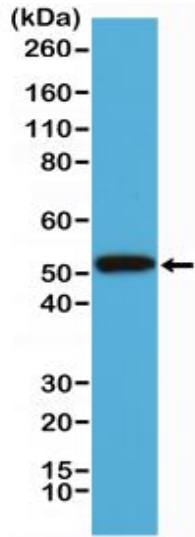
SPECIES REACTIVITY: Human.

STORAGE CONDITIONS: Store at -20°C; Avoid repeated freeze / thaw cycles.

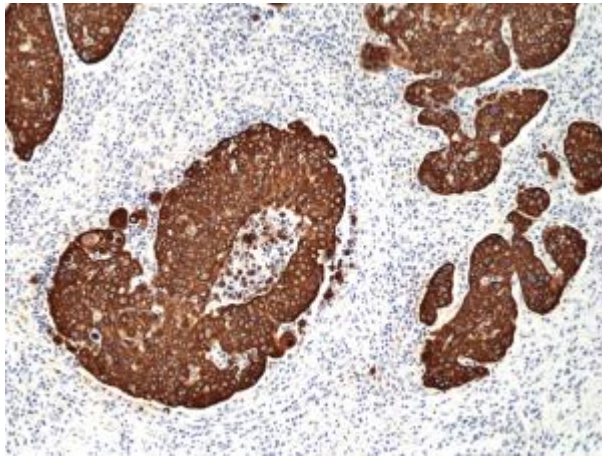
APPLICATIONS AND USAGE: IHC: 1:1000-1:2000.
Western Blot: 1:1000-1:2000.



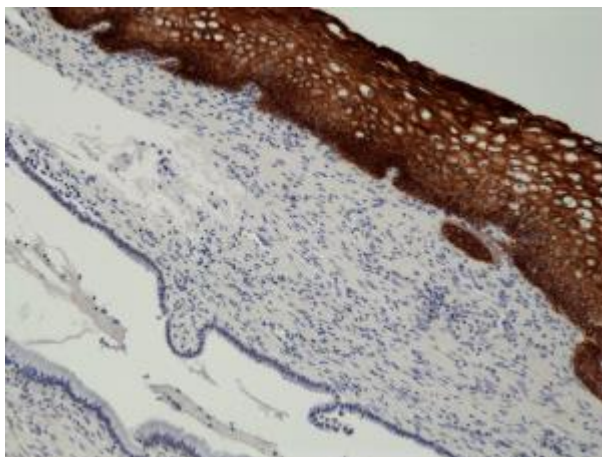
Immunohistochemical staining of formalin fixed and paraffin embedded human tonsil tissue section using anti-CK-14 rabbit monoclonal antibody (Clone RM328) at a 1:2000 dilution.



Western Blot of A431 cell lysate using anti-CK-14 rabbit monoclonal antibody (Clone RM328) at a 1:1000 dilution.



Immunohistochemical staining of formalin fixed and paraffin embedded human Cervical Squamous Cell Carcinoma tissue section using anti-CK-14 rabbit monoclonal antibody (Clone RM328) at a 1:2000 dilution.



Immunohistochemical staining of formalin fixed and paraffin embedded human Cervix tissue section using anti-CK-14 rabbit monoclonal antibody (Clone RM328) at a 1:2000 dilution.

RELATED PRODUCTS:

Anti-Cytokeratin 14 Antibody (IHC555) (Cat# A1498).

FOR RESEARCH USE ONLY! Not to be used on humans.