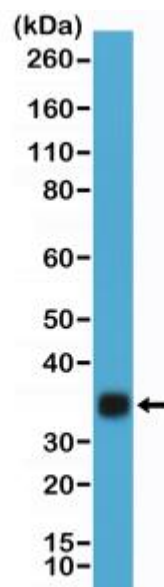
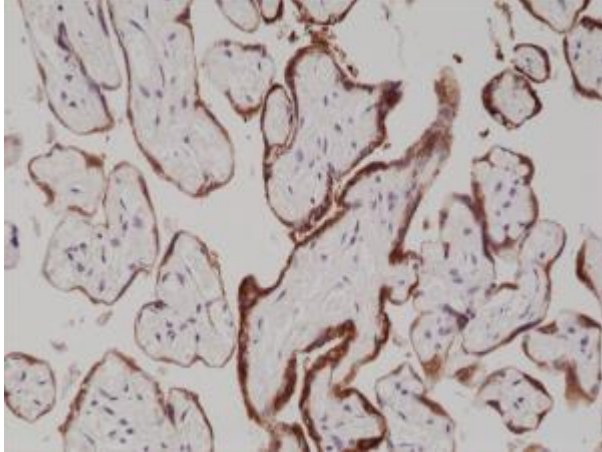


Anti-hCG (Human Chorionic Gonadotropin) Rabbit Monoclonal Antibody (RM330)

CATALOG NO.:	A1843-50 50 μ L.
BACKGROUND DESCRIPTION:	Rabbit monoclonal to hCG (Human Chorionic Gonadotropin)
ANTIBODY TYPE:	Monoclonal
CLONE:	RM330
HOST/ISOTYPE:	Rabbit / Rabbit IgG.
IMMUNOGEN:	Native hCG protein purified from Human Urine..
PURIFICATION:	Protein A affinity purified from an animal origin-free culture supernatant.
FORM:	Liquid.
FORMULATION:	50% Glycerol/PBS with 1% BSA and 0.09% sodium azide
SPECIES REACTIVITY:	Human.
STORAGE CONDITIONS:	Store at -20°C; Avoid repeated freeze / thaw cycles.
APPLICATIONS AND USAGE:	ELISA: 1:1000-1:10000. IHC: 1:500-1:1000. Western Blot: 1:5000-1:20000.



Western Blot of hCG protein purified from human urine using anti-hCG rabbit monoclonal antibody (Clone RM330) at a 1:20,000 dilution.



Immunohistochemical staining of formalin fixed and paraffin embedded human placenta tissue section using anti-hCG rabbit monoclonal antibody (Clone RM330) at a 1:1000 dilution.

RELATED PRODUCTS:

Chorionic Gonadotropin (hCG) (human) ELISA Kit (Cat# K7424).
Chorionic Gonadotropin (CG), human (Cat# 4778).

FOR RESEARCH USE ONLY! Not to be used on humans.