

# Anti-Paired Box Protein PAX-5 Rabbit Monoclonal Antibody (RM331)

---

**CATALOG NO.:** A1844-50 50 µL.

---

**BACKGROUND DESCRIPTION:** Rabbit monoclonal to Paired Box Protein PAX-5

**ANTIBODY TYPE:** Monoclonal

**CLONE:** RM331

**HOST/ISOTYPE:** Rabbit / Rabbit IgG.

**IMMUNOGEN:** A peptide corresponding to C-terminus of human Paired box protein Pax-5.

**PURIFICATION:** Protein A affinity purified from an animal origin-free culture supernatant

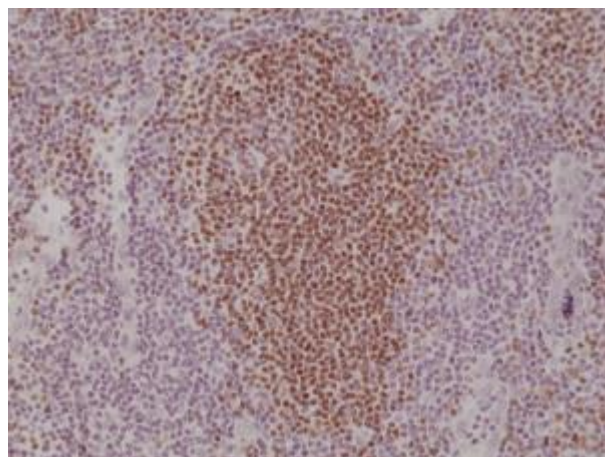
**FORM:** Liquid.

**FORMULATION:** 50% Glycerol/PBS with 1% BSA and 0.09% sodium azide

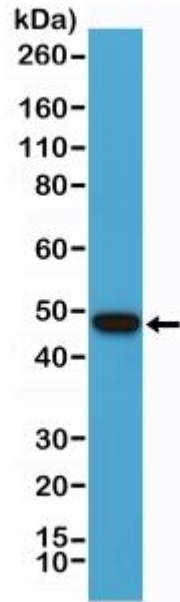
**SPECIES REACTIVITY:** Human.

**STORAGE CONDITIONS:** Store at -20°C; Avoid repeated freeze / thaw cycles.

**APPLICATIONS AND USAGE:** IHC: 1:500-1:1000.  
Western Blot: 1:1000-1:2000.



Immunohistochemical staining of formalin fixed and paraffin embedded human tonsil tissue section using anti-Paired box protein Pax-5 rabbit monoclonal antibody (Clone RM331) at a 1:1000 dilution.



Western Blot of Raji cell lysate using anti-Paired box protein Pax-5 rabbit monoclonal antibody (Clone RM331) at a 1:1000 dilution.

***FOR RESEARCH USE ONLY! Not to be used on humans.***