

# Anti-MART1 Rabbit Monoclonal Antibody (RM333)

CATALOG NO.: A1845-50 50  $\mu$ L.

**BACKGROUND DESCRIPTION:** MART-1 (also known as Melan-A) is a melanocyte differentiation antigen or marker recognized by autologous cytotoxic T lymphocytes. It is a membrane protein with one transmembrane peptide. Melan-A is expressed by a large proportion of melanoma tumors, both melanotic and amelanotic and by melanoma cell lines. It is present in melanocytes of normal skin and retina, nevi and in more than 85% of melanomas. Melan-A/MART-1 is not expressed by non-melanoma malignancies. It is recognized by autologous cytotoxic T lymphocytes. Subcellular fractionation shows that MART-1 is present in melanosomes and endoplasmic reticulum. Six other melanoma associated antigens recognized by autologous cytotoxic T cells include MAGE-1, Tyrosinase, gp100, gp75, BAGE-1, and GAGE-1.

**ANTIBODY TYPE:** Monoclonal

**CLONE:** RM333

**HOST/ISOTYPE:** Rabbit / Rabbit IgG.

**IMMUNOGEN:** A peptide corresponding to the N-terminus of human MART1 (Melanoma antigen recognized by T-cells-1).

**PURIFICATION:** Protein A affinity purified from an animal origin-free culture supernatant.

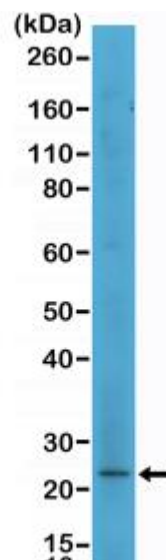
**FORM:** Liquid.

**FORMULATION:** 50% Glycerol/PBS with 1% BSA and 0.09% sodium azide

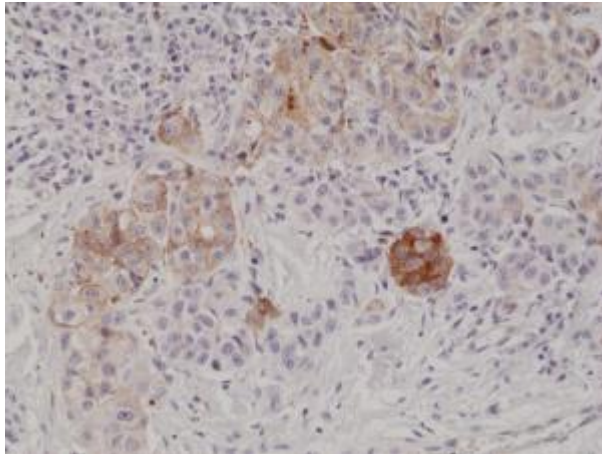
**SPECIES REACTIVITY:** Human.

**STORAGE CONDITIONS:** Store at -20°C; Avoid repeated freeze / thaw cycles.

**APPLICATIONS AND USAGE:** Western Blot: 1:500-1:1000.  
IHC: 1:500-1:1000.



Western Blot of SK-MEL-2 cell lysate using anti- MART1 rabbit monoclonal antibody (Clone RM333) at a 1:500 dilution.



Immunohistochemical staining of formalin fixed and paraffin embedded human melanoma tissue section using anti-MART1 rabbit monoclonal antibody (Clone RM333) at a 1:1000 dilution.

**RELATED PRODUCTS:**

MART-1/Melan-A, human recombinant (Cat# 4823).  
Anti-MART-1/Melan-A Antibody (Cat# A1344).  
MART-1/Melan-A, mouse recombinant (Cat# 4824).  
MART-1/Melan-A Antibody (Cat# 5823).

***FOR RESEARCH USE ONLY! Not to be used on humans.***