

# Anti-Surfactant Protein A (SP-A) Rabbit Monoclonal Antibody (RM334)

---

**CATALOG NO.:** A1846-50 50 µL.

---

**BACKGROUND DESCRIPTION:** In the presence of calcium ions, it binds to surfactant phospholipids and contributes to lower the surface tension at the air-liquid interface in the alveoli of the mammalian lung and is essential for normal respiration.

**ANTIBODY TYPE:** Monoclonal

**CLONE:** RM334

**HOST/ISOTYPE:** Rabbit / Rabbit IgG.

**IMMUNOGEN:** A peptide corresponding to the C-terminus of human Surfactant protein A (SP-A).

**PURIFICATION:** Protein A affinity purified from an animal origin-free culture supernatant.

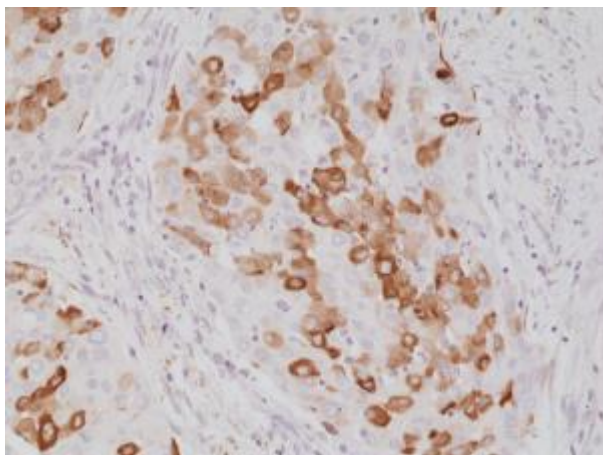
**FORM:** Liquid.

**FORMULATION:** 50% Glycerol/PBS with 1% BSA and 0.09% sodium azide

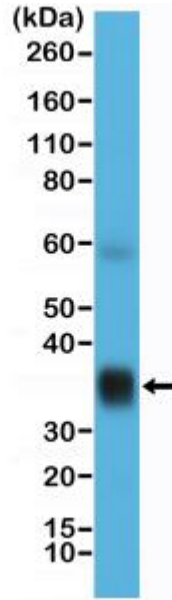
**SPECIES REACTIVITY:** Human.

**STORAGE CONDITIONS:** Store at -20°C; Avoid repeated freeze / thaw cycles.

**APPLICATIONS AND USAGE:** IHC: 1:500-1:1000.  
Western Blot: 1:500-1:1000.



Immunohistochemical staining of formalin fixed and paraffin embedded human lung cancer tissue section using anti-Surfactant protein A (SP-A) rabbit monoclonal antibody (Clone RM334) at a 1:1000 dilution.



Western Blot of human lung tissue lysate using anti- Surfactant protein A (SP-A) rabbit monoclonal antibody (Clone RM334) at a 1:10,000 dilution.

**RELATED PRODUCTS:**

Alpha1 Antitrypsin Antibody (Cat# 7009).  
Serpin A6 Antibody (Cat# 3906).

***FOR RESEARCH USE ONLY! Not to be used on humans.***